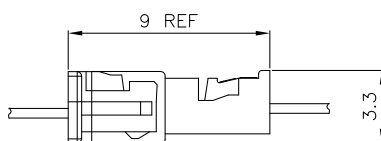


Specifications

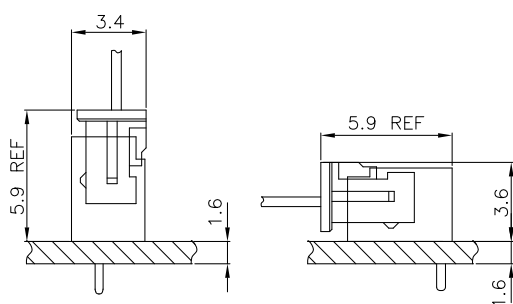
Temperature range: $-25^{\circ}\text{C} \sim +85^{\circ}\text{C}$
 Voltage rating: 125V
 Current rating: 1A
 Contact resistance: 20m Ω Max
 Insulation resistance: 100M Ω Min
 Withstand voltage: 500V AC

Assembly layout

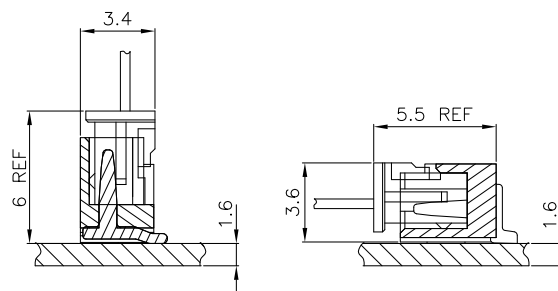
wire to wire



wire to board



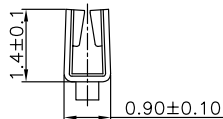
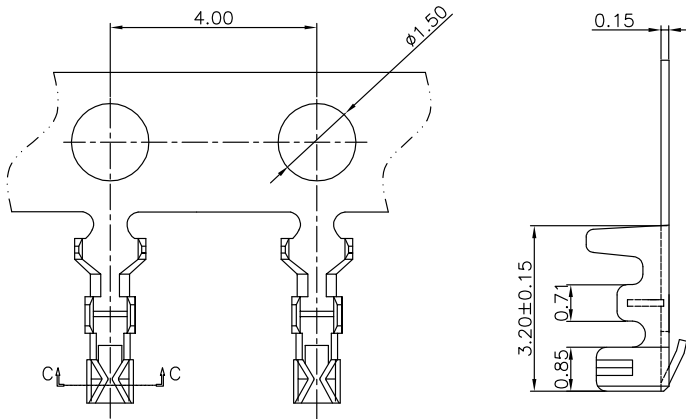
DIP Type



SMT Type

A1251TFX-X

Pitch 1.25mm Terminal



SECTION:C-C
SCALE:1:1

Specifications

MATERIAL SPECIFICATION:
Terminal: Phosphor Bronze

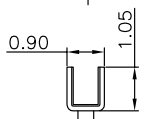
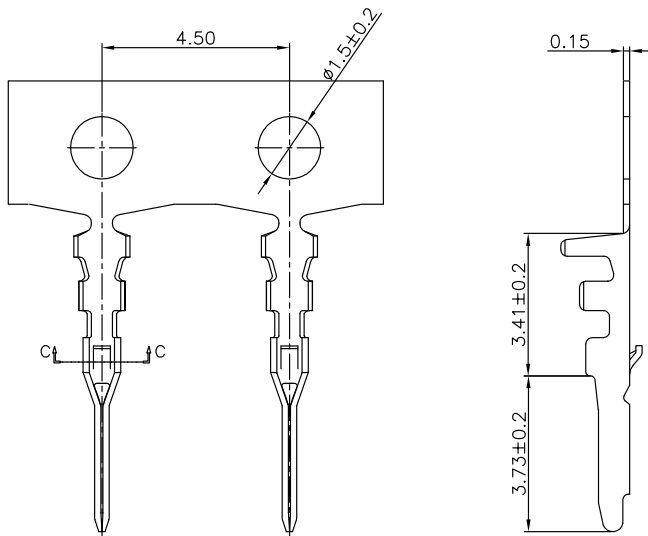
PLATING SPECIFICATION:
Bright tin

APPLICABLE WIRES:AWG #28 -#32
SUITABLE A1251 series Male housing

A1251 T F X-X
SERIES NO: T F X-X
CONNECTOR: T-TERMINAL
MALE FEMALE: F-FEMALE M-MALE
PLATING:
1-G/F
A-ALL AU G/F
C-BRIGHT TIN
D-MATTE TIN
METAL:
P-PHOSPHOR BRONZE
B-BRASS

A1251TMX-X

Pitch 1.25mm Terminal



SECTION:C-C
SCALE:1:1

Specifications

MATERIAL SPECIFICATION:
Terminal: Phosphor Bronze

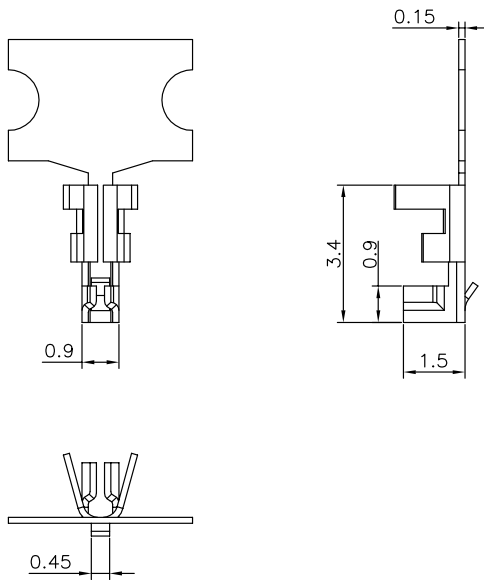
PLATING SPECIFICATION:
Bright tin

APPLICABLE WIRES:AWG #28 -#32
SUITABLE A1251 series Female housing

A1251 T M X-X
SERIES NO: T M X-X
CONNECTOR: T-TERMINAL
MALE FEMALE: F-FEMALE M-MALE
PLATING:
1-G/F
A-ALL AU G/F
C-BRIGHT TIN
D-MATTE TIN
METAL:
P-PHOSPHOR BRONZE
B-BRASS

A1251T1FX-X

Pitch 1.25mm Terminal



Specifications

MATERIAL SPECIFICATION:
Terminal: Phosphor Bronze

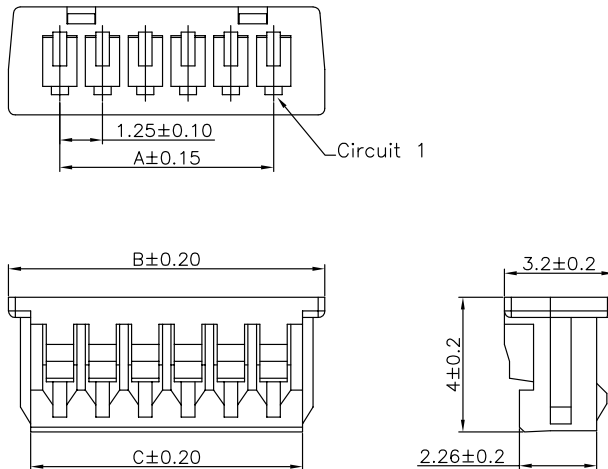
PLATING SPECIFICATION:
Bright tin

APPLICABLE WIRES:AWG #28 -#32
SUITABLE A1251 series Male housing

SERIES NO: A1251 T 1 F X-X
CONNECTOR: T-TERMINAL
TYPE CODE
MALE FEMALE: F-FEMALE M-MALE
PLATING: 1-G/F A-ALL AU G/F C-BRIGHT TIN D-MATTE TIN
METAL: P-PHOSPHOR BRONZE B-BRASS

A1251HM-1XXX0

Pitch 1.25mm Single row Housing



Specifications

MATERIAL SPECIFICATION:
Housing: PA66,94V-0

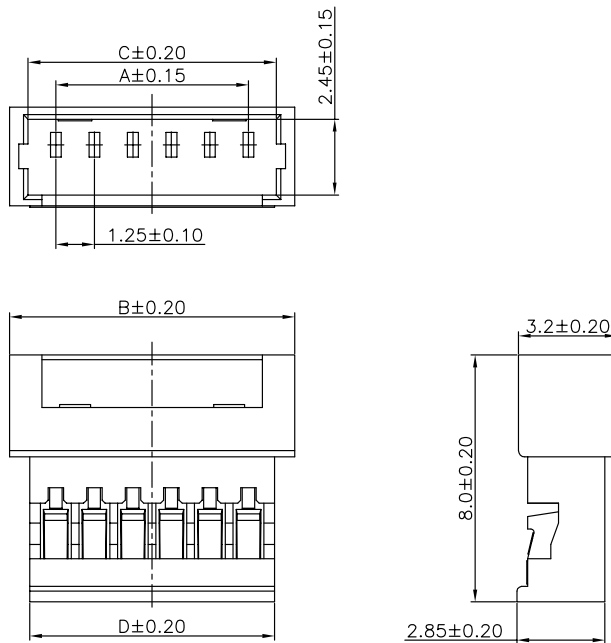
Suitable A1251 series Terminal
Mates With A1251 series Wafer

SERIES NO: A1251 H M-1 XX X 0
CONNECTOR: H-HOUSING
MALE FEMALE: M-MALE
COLOR: A-BLACK S-NATURE
PIN Q'PY: 02~18
ROW NO: 1-SINGLE ROW

Circuit	Dimensions(mm)			Circuit	Dimensions(mm)		
	A	B	C		A	B	C
02	---	4.25	2.95	11	12.50	15.50	14.20
03	2.50	5.50	4.20	12	13.75	16.75	15.45
04	3.75	6.75	5.45	13	15.00	18.00	16.70
05	5.00	8.00	6.70	14	16.25	19.25	17.95
06	6.25	9.25	7.90	15	17.50	20.50	19.20
07	7.50	10.50	9.15	16	18.75	21.75	20.45
08	8.75	11.75	10.40	17	20.00	23.00	21.70
09	10.00	13.00	11.65	18	21.25	24.25	22.95
10	11.25	14.25	12.90				

A1251HF-1XXX0

Pitch 1.25mm Single row Housing



Specifications

MATERIAL SPECIFICATION:
Housing: PA66,94V-0

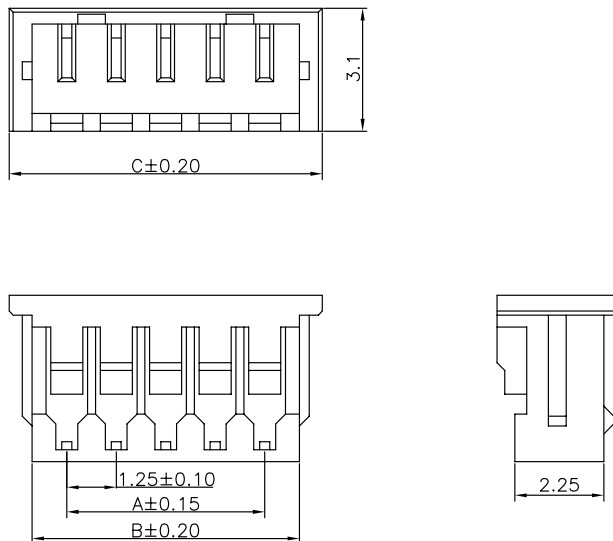
Suitable A1251 series Terminal
Mates With A1251 series Male housing

A1251 H F-1 XX X 0
SERIES NO: | | | | |
COLOR:
A-BLACK
S-NATURE
CONNECTOR:
H-HOUSING
MALE FEMALE:
F-FEMALE
PIN Q'PY:
02~10
ROW NO:
1-SINGLE ROW

Circuit	Dimensions(mm)				
	A	B	C	D	E
02	---	4.25	3.05	2.95	---
03	2.50	5.50	4.30	4.20	---
04	3.75	6.75	5.55	5.45	2.50
05	5.00	8.00	6.80	6.70	3.75
06	6.25	9.25	8.05	7.95	5.00
07	7.50	10.50	9.30	9.20	6.25
08	8.75	11.75	10.55	10.45	7.50
09	10.00	13.00	11.80	11.70	8.75
10	11.25	14.25	13.05	12.95	10.00

A1251HM-1XXX1

Pitch 1.25mm Single row Housing



Specifications

MATERIAL SPECIFICATION:
Housing: PA66,94V-0

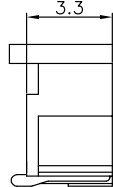
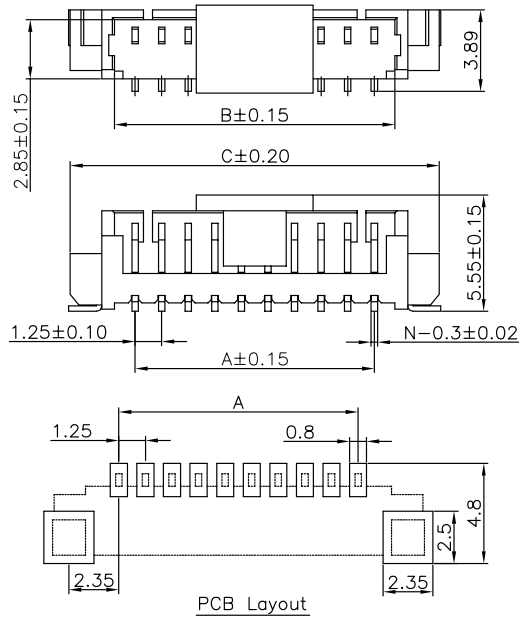
Suitable A1251 series Terminal
Mates With A1251 series Wafer

A1251 H M-1 XX X 1
SERIES NO: | | | | |
COLOR:
A-BLACK
S-NATURE
CONNECTOR:
H-HOUSING
MALE FEMALE:
M-MALE
PIN Q'PY:
02~16
ROW NO:
1-SINGLE ROW

Circuit	Dimensions(mm)			Circuit	Dimensions(mm)		
	A	B	C		A	B	C
02	---	3.00	4.15	10	11.25	13.00	14.15
03	2.50	4.25	5.40	11	12.50	14.25	15.40
04	3.75	5.50	6.65	12	13.75	15.50	16.65
05	5.00	6.75	7.90	13	15.00	16.75	17.90
06	6.25	8.00	9.15	14	16.25	18.00	19.15
07	7.50	9.25	10.40	15	17.50	19.25	20.40
08	8.75	10.50	11.65	16	18.75	20.50	21.65
09	10.00	11.75	12.90				

A1251W0-1XX2XX0

Pitch 1.25mm 180° Single row SMT Wafer



Specifications

MATERIAL SPECIFICATION:

Housing: LCP,94V-0
Contacts: Brass

PLATING SPECIFICATION:

Contacts: Bright tin

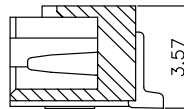
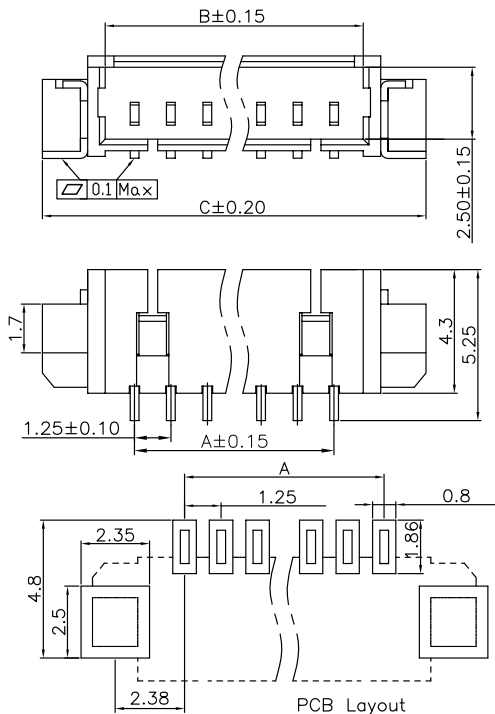
Mates with A1251 series housing

SERIES NO: A1251 W 0-1 XX 2 X X 0
CONNECTOR: W-WAFER
ANGLE: 0-180°
ROW NO: 1-SINGLE ROW
PIN Q' PY: 02~16
COLOR: A-BLACK, M-BEIGE
PLATING: A-ALL AU G/F, C-BRIGHT TIN, D-MATTE Tin
TERMIPOINT: 2-SMT

Circuit	Dimensions(mm)			Circuit	Dimensions(mm)		
	A	B	C		A	B	C
02	---	3.10	7.50	10	11.25	13.10	17.60
03	2.50	4.35	8.80	11	12.50	14.35	18.80
04	3.75	5.60	10.00	12	13.75	15.60	20.10
05	5.00	6.85	11.30	13	15.00	16.85	21.30
06	6.25	8.10	12.60	14	16.25	18.10	22.55
07	7.50	9.35	13.80	15	17.50	19.35	23.80
08	8.75	10.60	15.00	16	18.75	20.60	25.05
09	10.00	11.85	16.30				

A1251W9-1XX2XX0

Pitch 1.25mm 90° Single row SMT Wafer



Specifications

MATERIAL SPECIFICATION:

Housing: LCP,94V-0
Contacts: Brass

PLATING SPECIFICATION:

Contacts: Bright tin

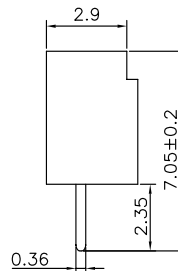
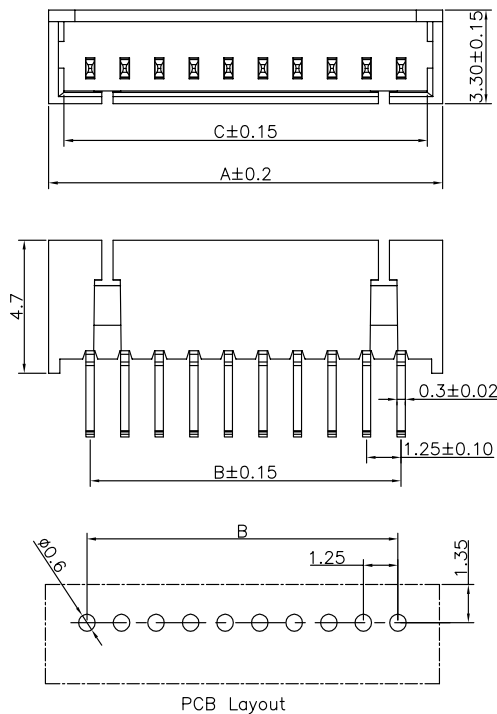
Mates with A1251 series housing

SERIES NO: A1251 W 9-1 XX 2 X X 0
CONNECTOR: W-WAFER
ANGLE: 9-90°
ROW NO: 1-SINGLE ROW
PIN Q' PY: 02~16
COLOR: A-BLACK, M-BEIGE
PLATING: A-ALL AU G/F, C-BRIGHT TIN, D-MATTE Tin
TERMIPOINT: 2-SMT

Circuit	Dimensions(mm)			Circuit	Dimensions(mm)		
	A	B	C		A	B	C
02	---	3.10	7.50	10	11.25	13.10	17.60
03	2.50	4.35	8.80	11	12.50	14.35	18.80
04	3.75	5.60	10.00	12	13.75	15.60	20.10
05	5.00	6.85	11.30	13	15.00	16.85	21.30
06	6.25	8.10	12.60	14	16.25	18.10	22.55
07	7.50	9.35	13.80	15	17.50	19.35	23.80
08	8.75	10.60	15.00	16	18.75	20.60	25.05
09	10.00	11.85	16.30				

A1251W0-1XX1XX0

Pitch 1.25mm 180° Single row DIP Wafer



Specifications

MATERIAL SPECIFICATION:

Housing: LCP,94V-0

Contacts: Brass

PLATING SPECIFICATION:

Contacts: Bright tin

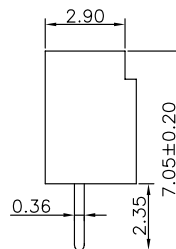
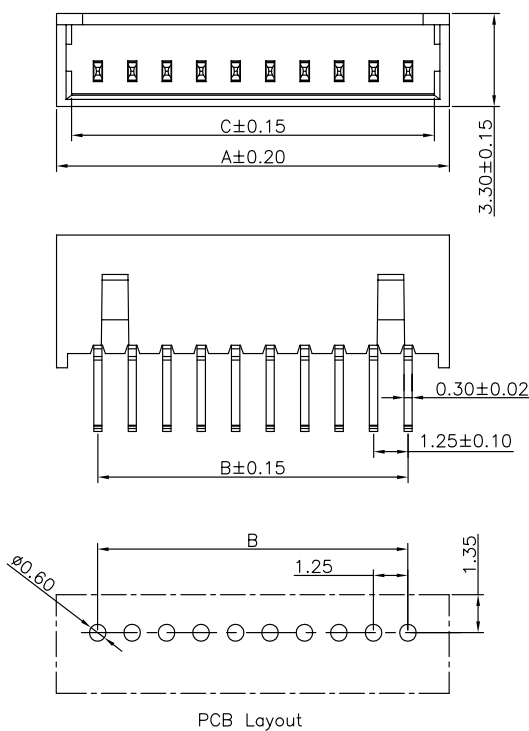
Mates with A1251 series housing

SERIES NO:	A1251	W	0-1	XX	1	X	X	0	COLOR:
CONNECTOR:									A-BLACK
W-WAFER									M-BEIGE
ANGLE:									PLATING:
0-180°									A-ALL AU G/F
ROW NO:									C-BRIGHT TIN
1-SINGLE ROW									D-MATTE Tin
PIN Q'PY:									TERMIPOINT:
02~16									1-DIP

Circuit	Dimensions(mm)			Circuit	Dimensions(mm)		
	A	B	C		A	B	C
02	4.20	---	3.10	10	14.20	11.25	13.10
03	5.45	2.50	4.35	11	15.45	12.50	14.35
04	6.70	3.75	5.60	12	16.70	13.75	15.60
05	7.95	5.00	6.85	13	17.95	15.00	16.85
06	9.20	6.25	8.10	14	19.20	16.25	18.10
07	10.45	7.50	9.35	15	20.45	17.50	19.35
08	11.70	8.75	10.60	16	21.70	18.75	20.60
09	12.95	10.00	11.85				

A1251W01-1XX1XX0

Pitch 1.25mm 180° Single row DIP Wafer



Specifications

MATERIAL SPECIFICATION:

Housing: LCP,94V-0

Contacts: Brass

PLATING SPECIFICATION:

Contacts: Bright tin

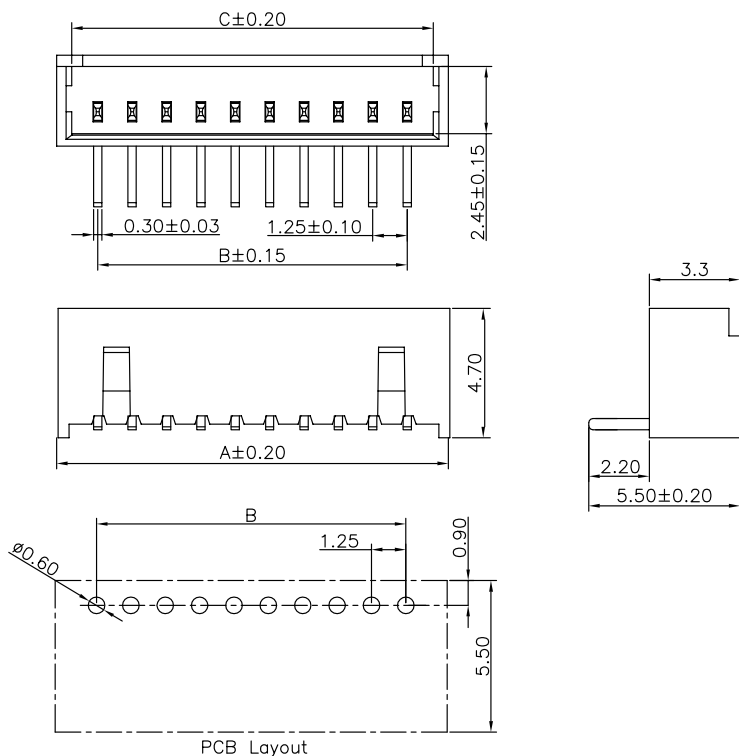
Mates with A1251 series housing

SERIES NO:	A1251	W	0	1-1	XX	1	X	X	0	COLOR:
CONNECTOR:										A-BLACK
W-WAFER										M-BEIGE
ANGLE:										PLATING:
0-180°										A-ALL AU G/F
TYPE:										C-BRIGHE TIN
1-TYPE 1										D-MATTE Tin
ROW NO:										TERMIPOINT:
1-SINGLE ROW										1-DIP
										PIN Q'PY:
										02~16

Circuit	Dimensions(mm)			Circuit	Dimensions(mm)		
	A	B	C		A	B	C
02	4.20	---	3.10	10	14.20	11.25	13.10
03	5.45	2.50	4.35	11	15.45	12.50	14.35
04	6.70	3.75	5.60	12	16.70	13.75	15.60
05	7.95	5.00	6.85	13	17.95	15.00	16.85
06	9.20	6.25	8.10	14	19.20	16.25	18.10
07	10.45	7.50	9.35	15	20.45	17.50	19.35
08	11.70	8.75	10.60	16	21.70	18.75	20.60
09	12.95	10.00	11.85				

A1251W91-1XX1XXX

Pitch 1.25mm 90° Single row DIP Wafer



Specifications

MATERIAL SPECIFICATION:
Housing: LCP,94V-0
Contacts: Brass

PLATING SPECIFICATION:
Contacts: Bright tin

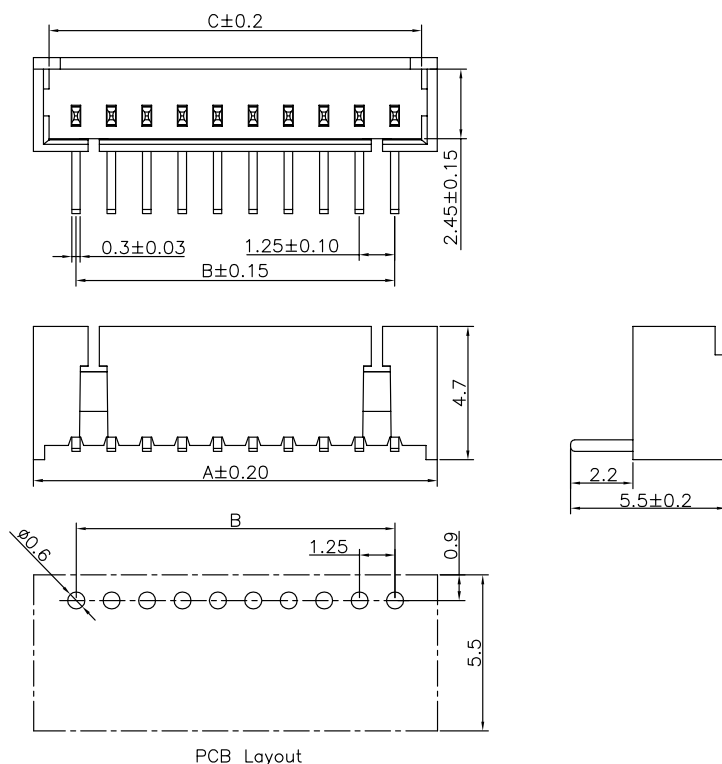
Mates with A1251 series housing

SERIES NO: A1251 W 9 1-1 XX 1 X X X
CONNECTOR: W-WAFER
ANGLE: 9-90°
TYPE: 1-TYPE 1
ROW NO: 1-SINGLE ROW
PIN Q'PY: 02~16
Package Spec:
0-Reel
1-PE BAG
COLOR:
A-BLACK
M-BEIGE
PLATING:
A-ALL AU G/F
C-BRIGHE TIN
D-MATTE Tin
TERMPOINT:
1-DIP

Circuit	Dimensions(mm)			Circuit	Dimensions(mm)		
	A	B	C		A	B	C
02	4.20	---	3.10	10	14.20	11.25	13.10
03	5.45	2.50	4.35	11	15.45	12.50	14.35
04	6.70	3.75	5.60	12	16.70	13.75	15.60
05	7.95	5.00	6.85	13	17.95	15.00	16.85
06	9.20	6.25	8.10	14	19.20	16.25	18.10
07	10.45	7.50	9.35	15	20.45	17.50	19.35
08	11.70	8.75	10.60	16	21.70	18.75	20.60
09	12.95	10.00	11.85				

A1251W9-1XX1XXX

Pitch 1.25mm 90° Single row DIP Wafer



Specifications

MATERIAL SPECIFICATION:
Housing: LCP,94V-0
Contacts: Brass

PLATING SPECIFICATION:
Contacts: Bright tin

Mates with A1251 series housing

SERIES NO: A1251 W 9-1 XX 1 X X X
CONNECTOR: W-WAFER
ANGLE: 9-90°
ROW NO: 1-SINGLE ROW
PIN Q'PY: 02~16
Package Spec:
0-LCP,Reel
1-LCP,PE BAG
COLOR:
A-BLACK
M-BEIGE
PLATING:
A-ALL AU G/F
C-BRIGHT TIN
D-MATTE Tin
TERMPOINT:
1-DIP

Circuit	Dimensions(mm)			Circuit	Dimensions(mm)		
	A	B	C		A	B	C
02	4.20	---	3.10	10	14.20	11.25	13.10
03	5.45	2.50	4.35	11	15.45	12.50	14.35
04	6.70	3.75	5.60	12	16.70	13.75	15.60
05	7.95	5.00	6.85	13	17.95	15.00	16.85
06	9.20	6.25	8.10	14	19.20	16.25	18.10
07	10.45	7.50	9.35	15	20.45	17.50	19.35
08	11.70	8.75	10.60	16	21.70	18.75	20.60
09	12.95	10.00	11.85				