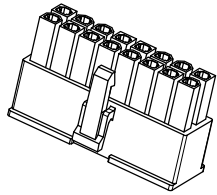
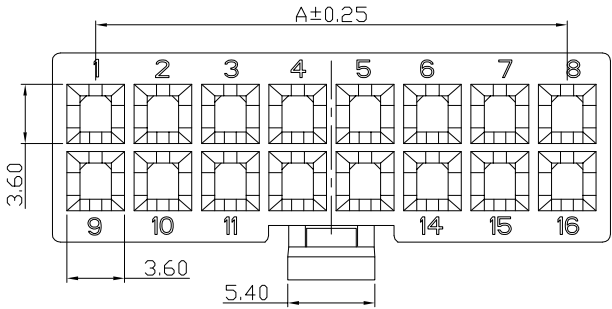
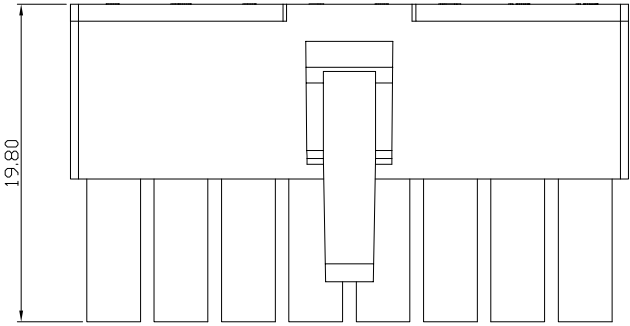


The product using material and processing must conform to the "WI-PZ-001"HSF technical standard control requirements

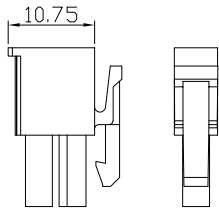
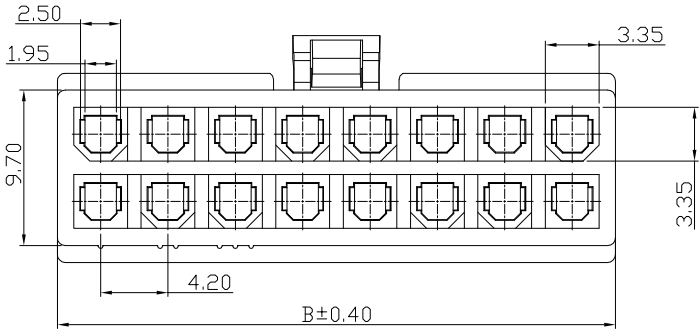
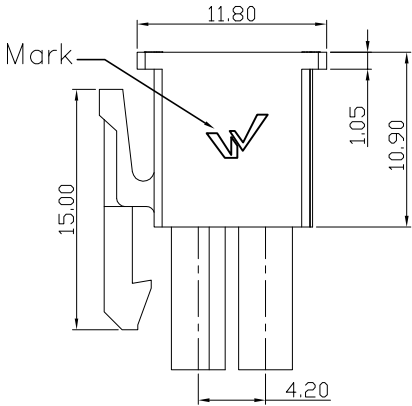
RoHS



3D view 1/2



2X2-2X14P



2X1P
1/2

- NOTE:
- 1.MATERIAL SPECIFICATION:
1-1.HOUSING: PA66
 - 2.MECHANICAL PERFORMANCE:
2-1.RETENTIVITY FORCE: 2.5KGF/pin min
2-2.DURABILITY: 30 CYCLES.
 - 3.ELECTRICAL PERFORMANCE:
3-1.CURRENT RATING: 9A
RATED VOLTAGE : 600V AC/DC
3-2.CONTACT RESISTANCE: 30 mΩ MAX
3-3.INSULATION RESISTANCE: 1000MΩ Min
3-4.DIELECTRIC WITHSTANDING : 1500V
 - 4.ENVIRONMENTAL PERFORMANCE:
4-1.OPERATING TEMPERATURE: -25°C~+85°C.
 - 5.PACKAGE SPEC: PE BAG
 - 6.P/N:

SERIES NO: C4201 H M-2 XX X X-M
CONNECTION: H-HOUSING
MALE FEMALE: M-MALE
ROW NO: 2-DOUBLE ROW
PIN Q'PY: 02~24
COLOR: A-BLACK
G-BLUE
S-NATURE

Circuit	Dimensions (mm)		Circuit	Dimensions (mm)	
	A	B		A	B
2*01	---	5.70	2*07	25.20	30.60
2*02	4.20	9.90	2*08	29.40	34.80
2*03	8.40	13.80	2*09	33.60	39.00
2*04	12.60	18.00	2*10	37.80	43.20
2*05	16.80	22.20	2*11	42.00	47.40
2*06	21.00	26.40	2*12	46.20	51.60

REV.	REVISION RECORD	DATE		GENERAL TOLERANCES		SCALE: 1:1	NAME	DATE	PART.NO:	DWG.NO:	
				LINEAR	ANGLES						
A0	NEW RELEASE	22.10.28		0.0±0.35	X°REF±6°	APPROVED	Wang_jr	22.10.28	C4201HM-2XXXX-M	ENDE05	
			UNIT: mm	0.00±0.25	X°±3°	CHECK	XueZe_Ma	22.10.28	TITLE: Pitch 4.2mm Male 双排 Housing		
			SIZE: A4	0.000±0.10	X°X' ±2°	DRAWN	LanXuan_Hou	22.10.28		REV: A0	SHEET: 1/1