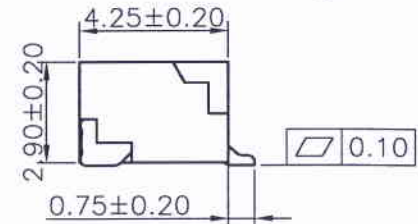
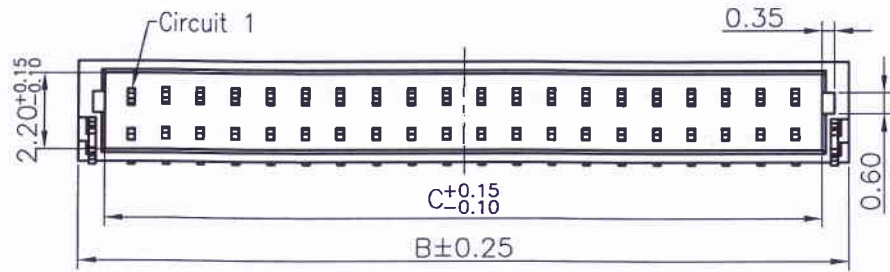
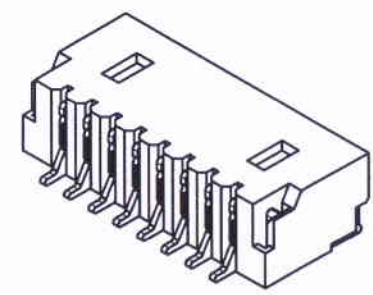


Specifications:
 Rated Voltage : 50V AC/DC
 Rated Current : 1A AC,DC
 Withstand Voltage : 500V AC/minute
 Contact Resistance : 20mΩ(MAX.)
 Insulation Resistance : 100MΩ(MIN.)
 Temperature Range : -25°C~+85°C
 The product using material and processing must conform to the "WI-PZ-142"HSF technical standard control requirements

11002W90-NP-SK-HF-R
 ① ② ③ ④ ⑤ ⑥ ⑦

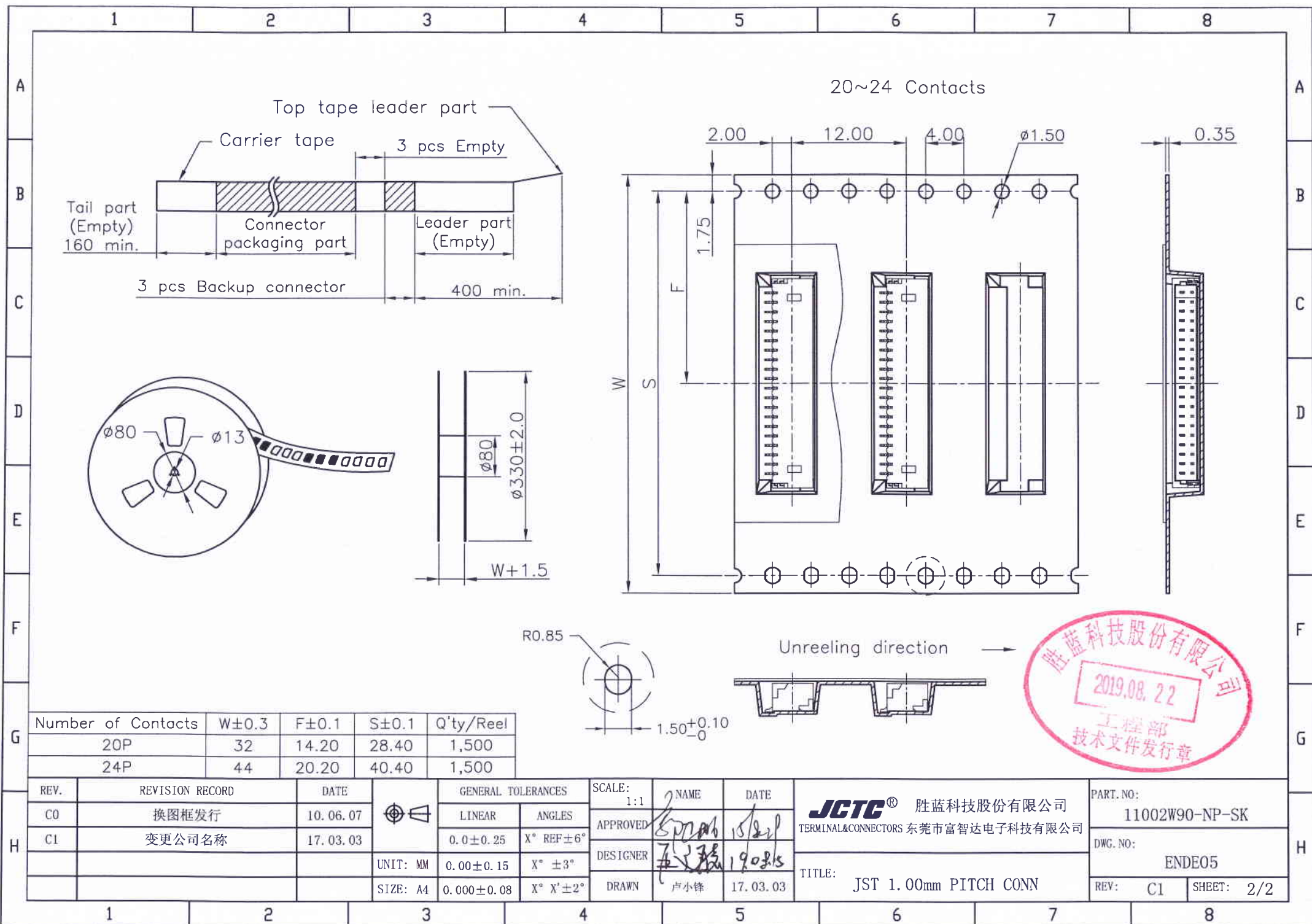
- ① Series No.
- ② W90 : Side Contact
W00 : Up Contact
- ③ No. of Circuits
- ④ S: SMT type
Blank: DIP type
- ⑤ K : Mount type
- ⑥ HF : Halogen Free
- ⑦ R : Tape & Reel



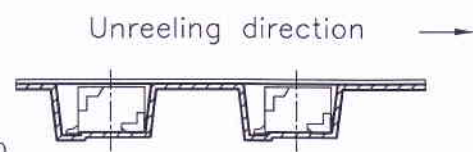
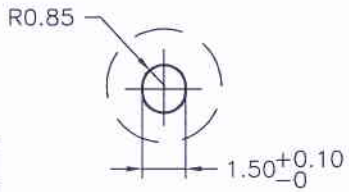
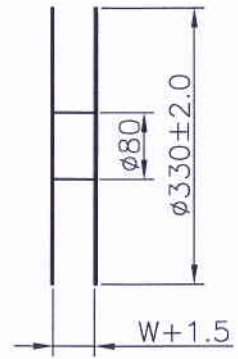
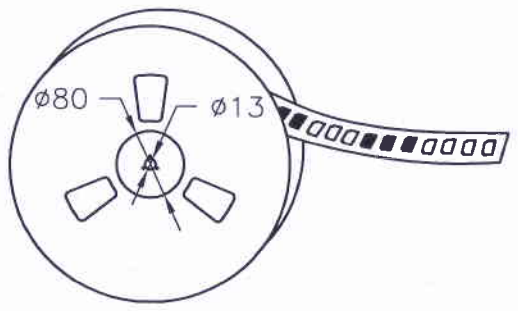
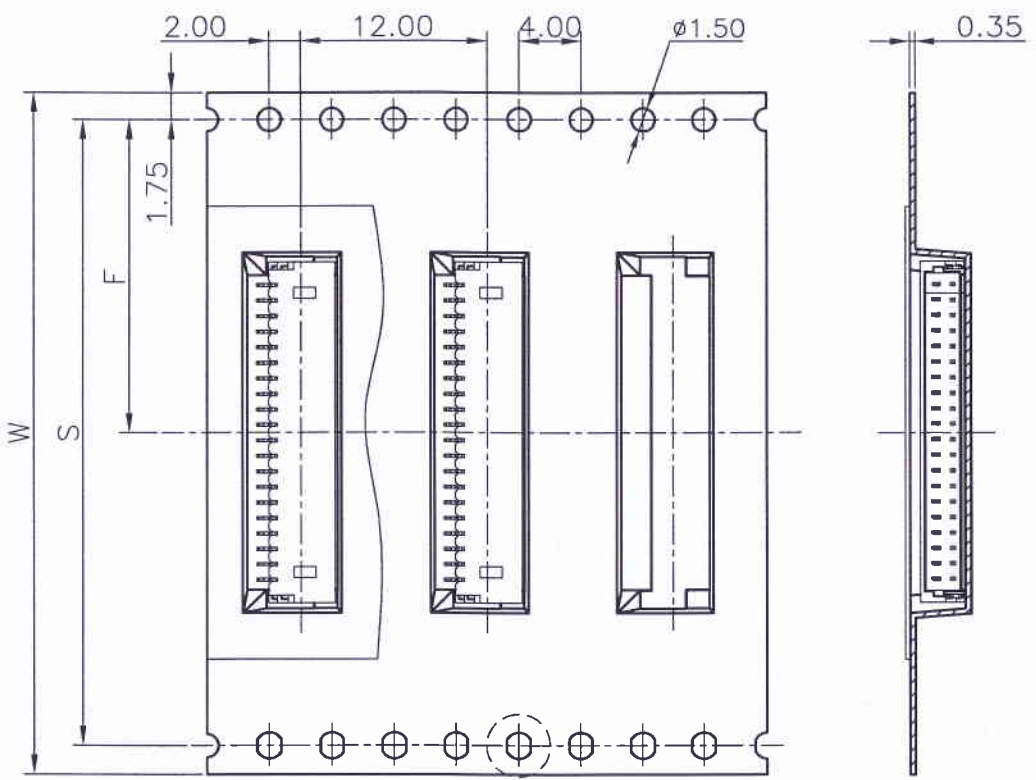
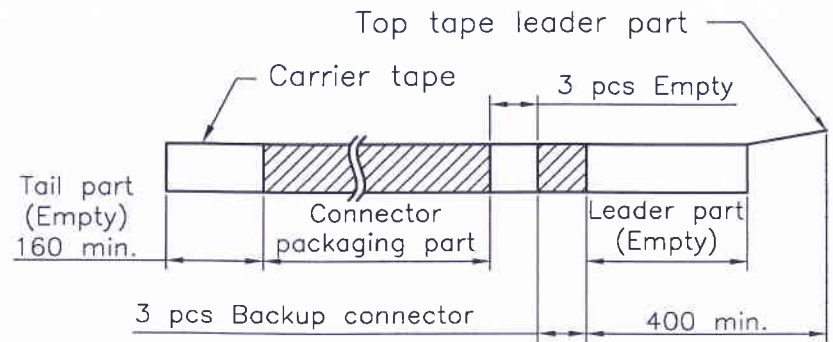
Circuits	Dimensions			
	Part No	A	B	C
20P	19.00	22.00	20.50	18.00
24P	23.00	26.00	24.50	22.00

Part No.	Material	Color	Pin Material	Solder Tabs
11002W90-NP-SK-R	High temperature plastic,UL94V-0	Beige	Phosphor Bronze/Gold-flash	Phosphor Bronze/Gold-flash
11002W90-NP-SK-HF-R	High temperature plastic,UL94V-0	Beige	Phosphor Bronze/Tin-plated	Phosphor Bronze/Tin-plated

REV.	REVISION RECORD	DATE	GENERAL TOLERANCES	SCALE:	NAME	DATE	JCTC® 胜蓝科技股份有限公司 TERMINAL&CONNECTORS 东莞市富智达电子科技有限公司	PART NO:
C0	换图框发行	09.11.20	LINER	1:1				
C1	TN1010150100	10.10.15	ANGLES	APPROVED				DWG. NO:
C2	变更公司名称	17.03.03	0.0±0.25	DESIGNER				ENDE05
			0.00±0.15	DRAWN	卢小锋	17.03.03	TITLE:	REV: C2 SHEET: 1/2
			0.000±0.08				JST 1.00mm PITCH CONN	



20~24 Contacts



Number of Contacts	W±0.3	F±0.1	S±0.1	Q'ty/Reel
20P	32	14.20	28.40	1,500
24P	44	20.20	40.40	1,500

REV.	REVISION RECORD	DATE	GENERAL TOLERANCES	SCALE: 1:1	NAME	DATE	JCTC® 胜蓝科技股份有限公司 TERMINAL&CONNECTORS 东莞市富智达电子科技有限公司	PART. NO:
C0	换图框发行	10.06.07	LINEAR	APPROVED	5/21/15			11002W90-NP-SK
C1	变更公司名称	17.03.03	0.0±0.25	DESIGNER	5/21/15		DWG. NO:	
			UNIT: MM 0.00±0.15		卢小锋	17.03.03		ENDE05
			SIZE: A4 0.000±0.08					REV: C1 SHEET: 2/2
							TITLE: JST 1.00mm PITCH CONN	