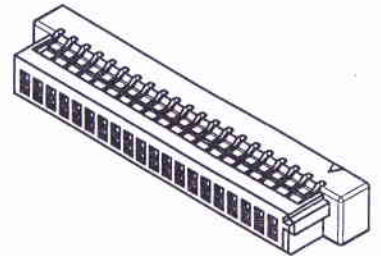
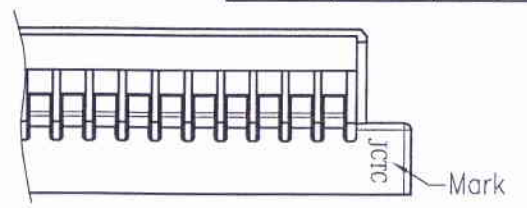
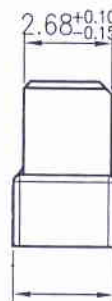
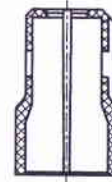
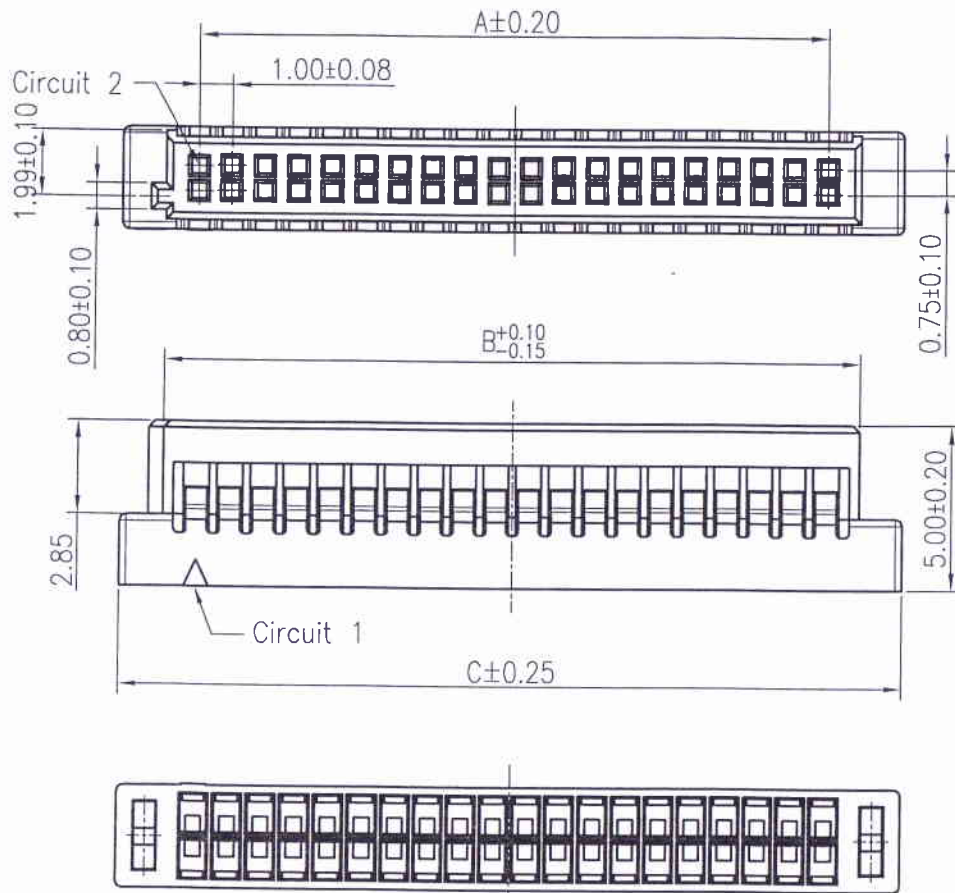


RoHS



Circuit No.	Dimensions		
	A	B	C
2x10P	9.00	11.00	13.65
2x11P	10.00	12.00	14.65
2x12P	11.00	13.00	15.65
2x13P	12.00	14.00	16.65
2x15P	14.00	16.00	18.65
2x20P	19.00	21.00	23.65
2x23P	22.00	24.00	26.65
2x25P	24.00	26.00	28.65

SPECIFICATIONS

Current Rating: 1A AC,DC
 Voltage Rating: 50V AC,DC
 Temperature Range: -25°C ~ +85°C
 Contact Resistance: 20mΩ Max.
 Insulation Resistance: 100MΩ Min.
 Withstanding Voltage: 250V AC/minute

Suitable for JCTC 11005 series terminal

11005H00-2xNP-HF-NK

- ① Series No.
- ② H90 : Side Contact
H00 : Up Contact
- ③ No. of Circuits
- ④ HF : Halogen Free
- ⑤ NK : No Mark
Blank : Mark



Part No.	Material	Color
11005H00-2xNP	Nylon 46,UL94V-0	Natural(Beige)
11005H00-2xNP-NK	Nylon 46,UL94V-0	Natural(Beige)
11005H00-2xNP-HF	Nylon 66,UL94V-0	白色无卤
11005H00-2xNPA-HF	Nylon 66,UL94V-0	黑色无卤
11005H00-2xNP-HF-NK	Nylon 66,UL94V-0	白色无卤

REV.	REVISION RECORD	DATE	GENERAL TOLERANCES	SCALE:	NAME	DATE
C3	新增2X10P黑色无卤规格	13.03.27	LINEAR 0.0±0.25	1:1	APPROVED	DESIGNER
C4	HN1306260098	13.06.26		ANGLES X° REF±6°		
C5	新增2X12P规格	14.11.20	UNIT: MM 0.00±0.15	DRAWN	NAME	DATE
C6	新增2X11P规格	16.08.23	SIZE: M1 0.000±0.08			

JCTC® 胜蓝科技股份有限公司
 TERMINAL&CONNECTORS 东莞市富智达电子科技有限公司

TITLE: 88252 1.00mm PITCH HOUSING

PART NO:	11005H00-2xNP-XX-XX	
DWG NO:	ENDE05	
REV:	C6	SHEET: 1/1