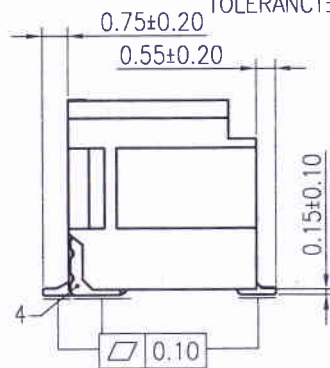
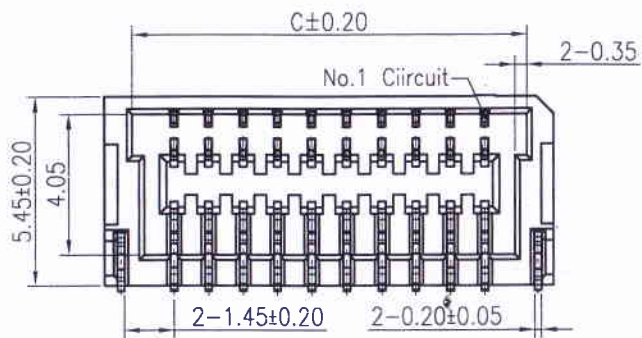
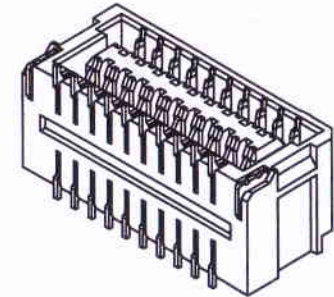
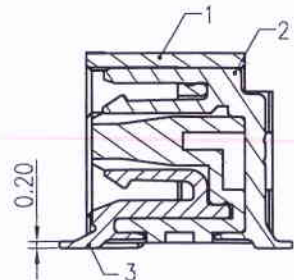


**SPECIFICATIONS**  
 Voltage Rating: 50V AC,DC  
 Current Rating: 1A AC,DC  
 Withstanding Voltage: 500V AC/minute  
 Contact Resistance: 30mΩ Max.  
 Insulation Resistance: 100MΩ Min.  
 Temperature Range: -25°C ~ +85°C  
 The product using material and processing must conform to the "WI-PZ-142" HSF technical standard control requirements



Dimensional Ordering Information:			
Circuits Part No	Dimensions		
	A	B	C
2X10P	13.00	9.00	11.45
2X12P	15.00	11.00	13.45
2X15P	18.00	14.00	16.45
2X20P	23.00	19.00	21.45
2X25P	28.00	24.00	26.45



11006W90-2XNP-S-5AE-NK-R  
 ① ② ③ ④ ⑤ ⑥ ⑦ ⑧

- ① Series No.
- ② W90 : Side Contact  
W00 : Up Contact
- ③ No. of Circuits
- ④ S: SMT type
- ⑤ 5A: Pin Gold-flash
- ⑥ E: Solder Tabs Matte Tin-plated
- ⑦ NK : No Mark
- ⑧ R : Reel pack

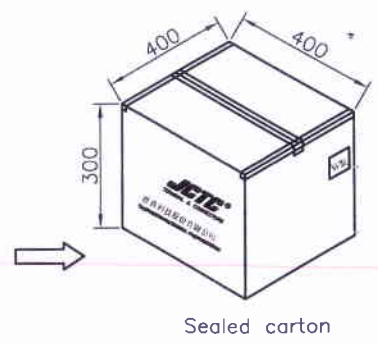
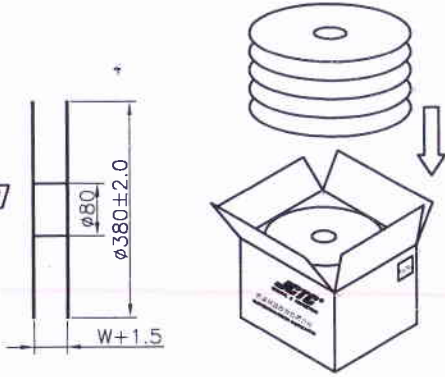
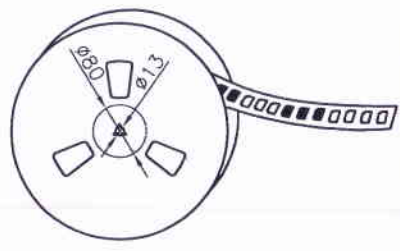
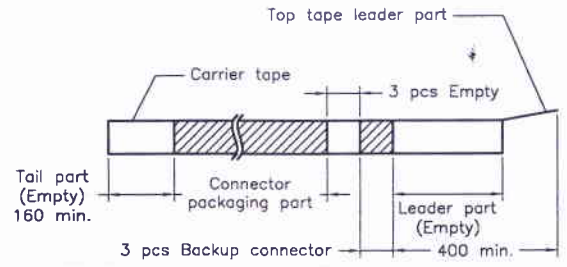
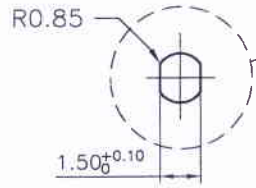
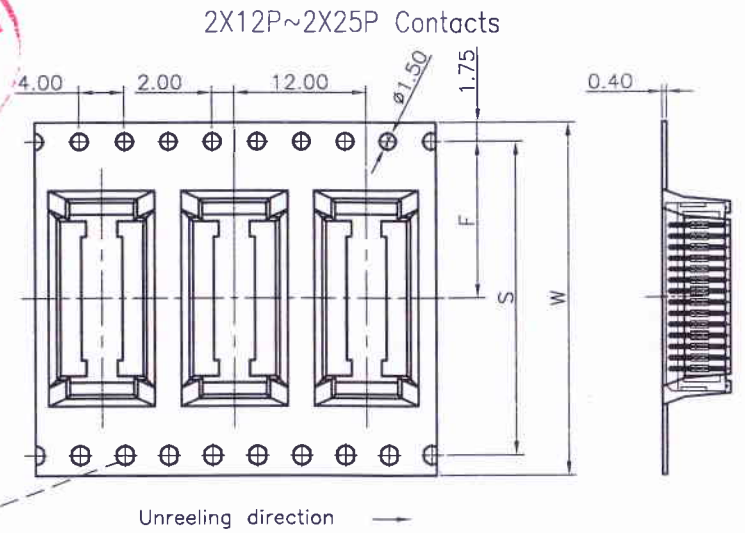
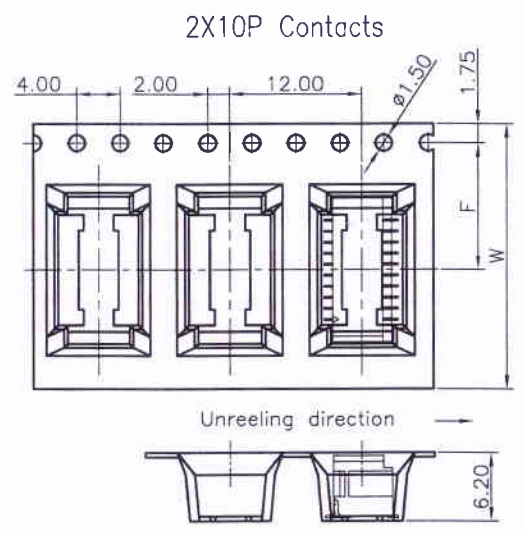
Part No.	Part Name	Q'TY	Material	Finish/Color
1	Housing	1	High temperature plastic	UL94V-0; Beige
2	Pin A	*	Phosphor Bronze	30u" Min.Nickel Under plated Over All. Gold-flash on contact area&Solder Tails.
3	Pin B	*	Phosphor Bronze	30u" Min.Nickel Under plated Over All. Gold-flash on contact area&Solder Tails.
4	Solder Tabs	2	Brass	Nickel 30u" min;Matte Tin-plated 60u" min

REV.	REVISION RECORD	DATE	GENERAL TOLERANCES	SCALE:	NAME	DATE	PART. NO: 11006W90-2XNP-S-5AE-NK-R
A0	新图面发行	18.07.02	LINEAR	1:1			
			ANGLES	APPROVED			
			0.0±0.25	DESIGNER			
			0.00±0.15	DRAWN			
			0.000±0.08				

**JCTC** 胜蓝科技股份有限公司  
 TERMINAL&CONNECTORS 东莞市富智达电子科技有限公司

TITLE:  
JST 1.00mm PITCH 90° 双排 WAFER

DWG. NO: ENDE05	
REV: A0	SHEET: 1/2



Number of Contacts	W±0.3	F±0.1	S±0.1	间距	长度	Q'ty/Reel	Q'ty/Box
2X10P	24	11.50	--	20PCS	36PCS	1,000	10,000
2X12P~2X15P	32	14.20	28.40	20PCS	36PCS	1,000	8,000
2X20P~2X25P	44	20.20	40.40	20PCS	36PCS	1,000	6,000

REV.	REVISION RECORD	DATE	UNIT: MM	GENERAL TOLERANCES	SCALE: 1:1	NAME	DATE	JCTC® 胜蓝科技股份有限公司 TERMINAL&CONNECTORS 东莞市富智达电子科技有限公司	PART. NO:
A0	新图面发行	18.07.02	SIZE: A4	LINEAR: 0.0 ± 0.25 ANGLES: X° REF ± 6° 0.00 ± 0.15 X° ± 3° 0.000 ± 0.08 X° X' ± 2°	APPROVED: [Signature]	DESIGNER: [Signature]	18.07.02		DRAWN: 黄小锋
TITLE: 2.00mm PITCH 90° SMT TYPE WAFER									DWG. NO: ENDE05
REV: A0									SHEET: 2/2

1 2 3 4 5 6 7 8