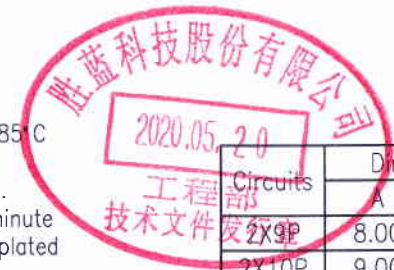


- 11007W00-2xNPX-2S-L-5GE-H1-HF-NK-R  
 ① ② ③ ④ ⑤ ⑥ ⑦ ⑧ ⑨ ⑩ ⑪
- ① Series No.
  - ② W90 : Side Contact
  - ③ No. of Circuits
  - ④ Color: A-Black Blank-Natural type
  - ⑤ 2S: SMT TYPE
  - ⑥ L :With lock
  - ⑦ 5A : Au 1u" On Pin And Solder Tabs
  - 5AE : Au 1u" On Pin, Matter Tin On Solder Tabs
  - 5GE : Au 15u" On Pin, Matter Tin On Solder Tabs
  - 5E : Au 5u" On Pin, Au 1u" On Solder Tabs
  - 5EE : Au 5u" On Pin, Matter Tin On Solder Tabs
  - ⑧ H1 : PA4T
  - ⑨ HF : Halogen Free
  - ⑩ NK : No No Mark
  - ⑪ R : Tape & Reel (With Cap)

Specifications  
 Current Rating: 0.8A AC,DC  
 Voltage Rating: 50V AC,DC  
 Temperature Range: -25°C ~ +85°C  
 Contact Resistance: 20mΩ Max.  
 Insulation Resistance: 100MΩ Min.  
 Withstanding Voltage: 250V AC/minute  
 Contact: Phosphor Bronze/Gold-plated  
 Solder Tabs: Brass/Tin-plated  
 Insulator: Thermal Plasticity Resin, UL 94V-0  
 Cap: Thermal Plasticity Resin, UL 94V-0  
 The product using material and processing must conform to the "WI-PZ-142"HSF technical standard control requirements

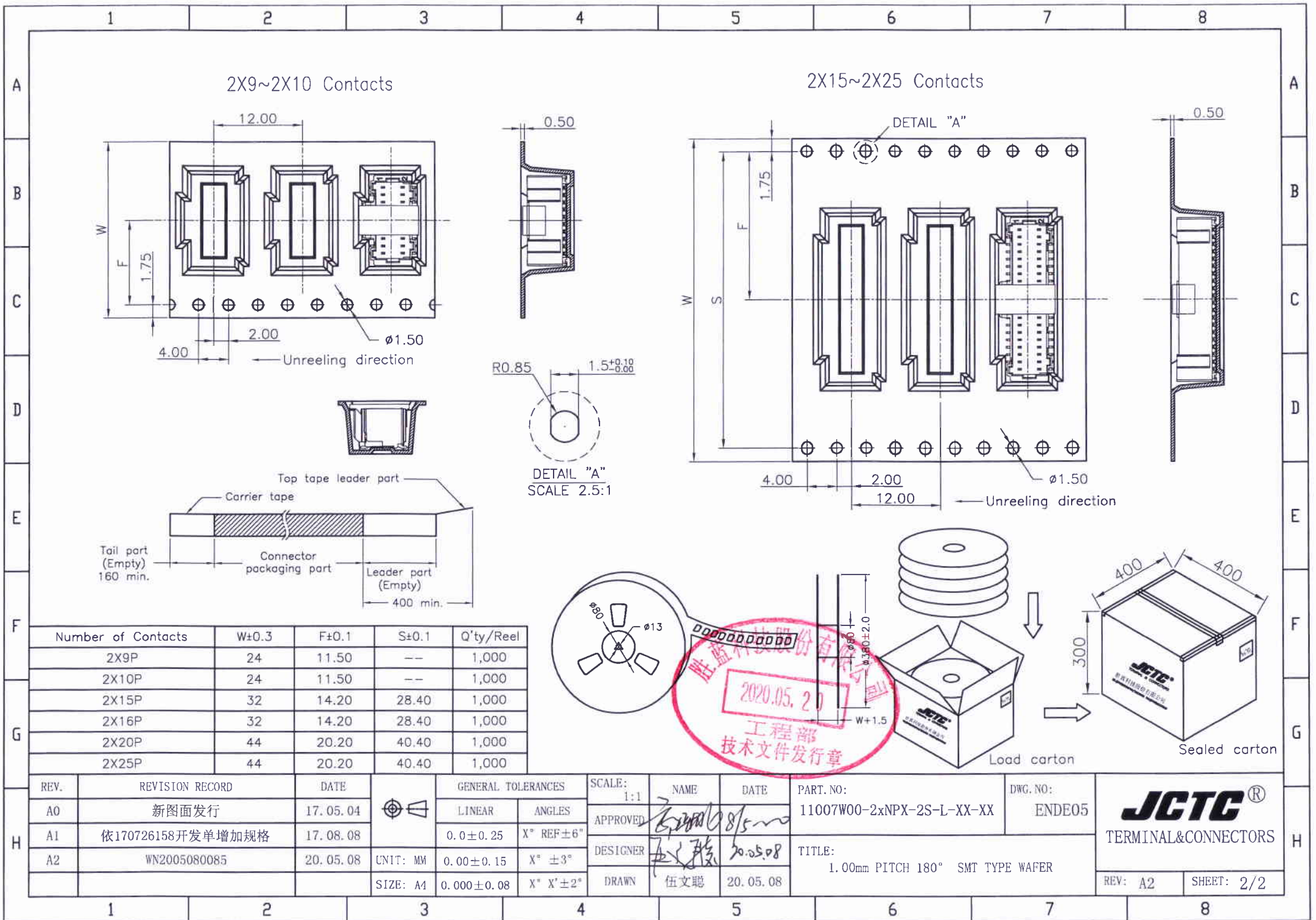


Circuits	Dimensions	
	A	B
2X10P	8.00	11.30
2X15P	9.00	12.30
2X16P	14.00	17.30
2X20P	15.00	18.30
2X25P	19.00	22.30
2X25P	24.00	27.30

Part No.	Insulator	Pin	Solder Tabs
11007W00-2xNP-2S-L-5AE-R	PA6T,UL94V-0/Natural	Phosphor Bronze/Gold-flash	Brass/Matter Tin
11007W00-2xNP-2S-L-5EE-R	PA6T,UL94V-0/Natural	Phosphor Bronze/5u"Au	Brass/Matter Tin
11007W00-2xNP-2S-L-5A-HF-R	LCP,UL94V-0/Natural	Phosphor Bronze/Gold-flash	Brass/Gold-flash
11007W00-2xNP-2S-L-5AE-HF-R	LCP,UL94V-0/Natural	Phosphor Bronze/Gold-flash	Brass/Matter Tin
11007W00-2xNP-2S-L-5GE-HF-R	LCP,UL94V-0/Natural	Phosphor Bronze/15u"Au	Brass/Matter Tin
11007W00-2xNP-2S-L-5AE-H1-HF-R	PA4T,UL94V-0/Natural	Phosphor Bronze/Gold-flash	Brass/Matter Tin
11007W00-2xNP-2S-L-5GE-H1-HF-R	PA4T,UL94V-0/Natural	Phosphor Bronze/15u"Au	Brass/Matter Tin
11007W00-2xNPA-2S-L-5GE-HF-R	LCP,UL94V-0/Black	Phosphor Bronze/15u"Au	Brass/Matter Tin
11007W00-2xNPA-2S-L-5AE-HF-R	LCP,UL94V-0/Black	Phosphor Bronze/Gold-flash	Brass/Matter Tin
11007W00-2xNP-2S-L-5AE-NK-R	PA6T,UL94V-0/Natural	Phosphor Bronze/Gold-flash	Brass/Matter Tin
11007W00-2xNP-2S-L-5AE-H1-HF-NK-R	PA4T,UL94V-0/Natural	Phosphor Bronze/Gold-flash	Brass/Matter Tin
11007W00-2xNP-2S-L-5E-H1-HF-NK-R	PA4T,UL94V-0/Natural	Phosphor Bronze/5u"Au	Brass/Gold-flash

REV.	REVISION RECORD	DATE	GENERAL TOLERANCES	SCALE: 1:1	NAME	DATE	PART. NO:	DWG. NO:	JCTC® TERMINAL&CONNECTORS
A5	WN1908290206	19.08.29	LINEAR	APPROVED			11007W00-2xNPX-2S-L-XX-XX	ENDE05	
A6	WN1909120228	19.09.17	0.0±0.25	DESIGNER			TITLE:		
B0	WN1912020290	19.12.02	0.00±0.15	DRAWN			1.00mm PITCH 180° SMT TYPE WAFER		
B1	WN2005080085	20.05.08	0.00±0.08		伍文聰	20.05.08			

REV: B1 SHEET: 1/2



Number of Contacts	W±0.3	F±0.1	S±0.1	Q'ty/Reel
2X9P	24	11.50	--	1,000
2X10P	24	11.50	--	1,000
2X15P	32	14.20	28.40	1,000
2X16P	32	14.20	28.40	1,000
2X20P	44	20.20	40.40	1,000
2X25P	44	20.20	40.40	1,000

REV.	REVISION RECORD	DATE	GENERAL TOLERANCES	SCALE:	NAME	DATE	PART. NO.:	DWG. NO.:
A0	新图面发行	17.05.04	LINEAR	1:1			11007W00-2xNPX-2S-L-XX-XX	ENDE05
A1	依170726158开发单增加规格	17.08.08	0.0±0.25	APPROVED				
A2	WN2005080085	20.05.08	0.00±0.15	DESIGNER				
			0.00±0.08	DRAWN	伍文聪	20.05.08	TITLE:	
							1.00mm PITCH 180° SMT TYPE WAFER	

**JCTC**®  
TERMINAL&CONNECTORS

REV: A2      SHEET: 2/2