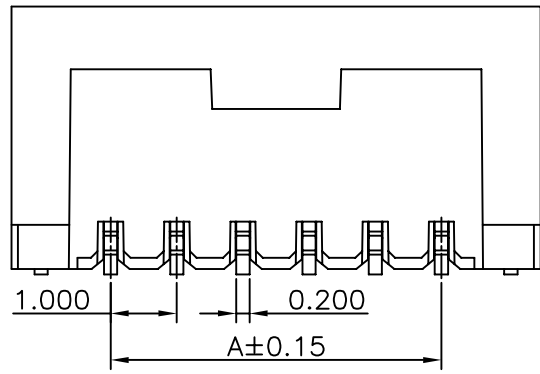
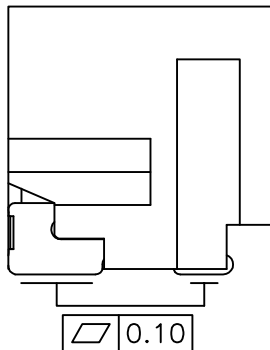


P.C.B. LAYOUT  
GENERAL TOLERANCES:±0.05mm



Specifications:  
 Rated Voltage : 150V AC/DC  
 Rated Current : 1A AC,DC  
 Withstand Voltage : 500V AC/minute  
 Contact Resistance : 20mΩ(MAX.)  
 Insulation Resistance : 100MΩ(MIN.)  
 Temperature Range : -25°C~+85°C  
 The product using material and processing must conform to the "WI-PZ-142"HSF technical standard control requirements

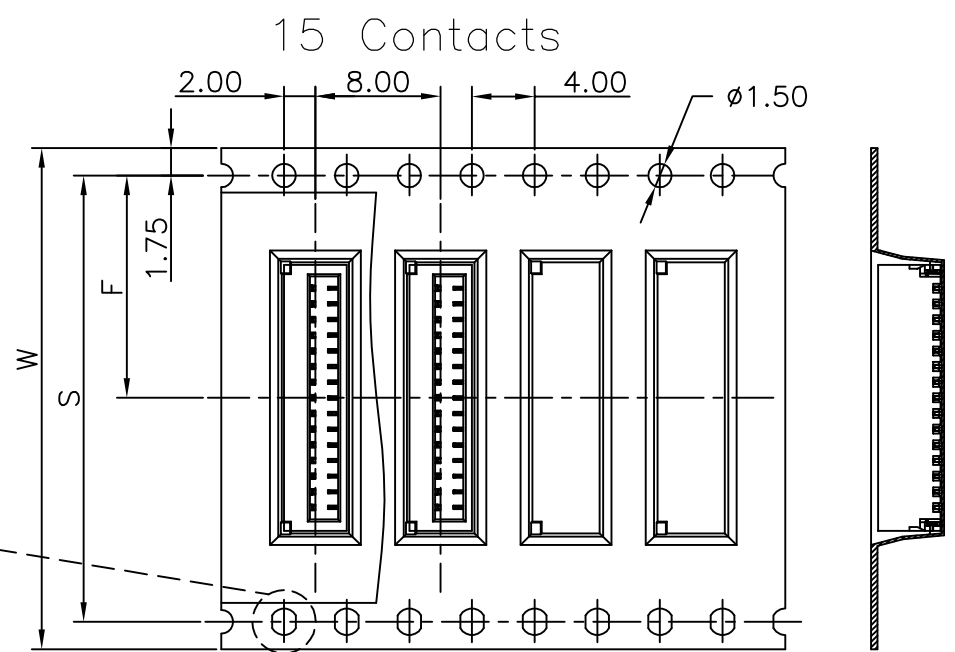
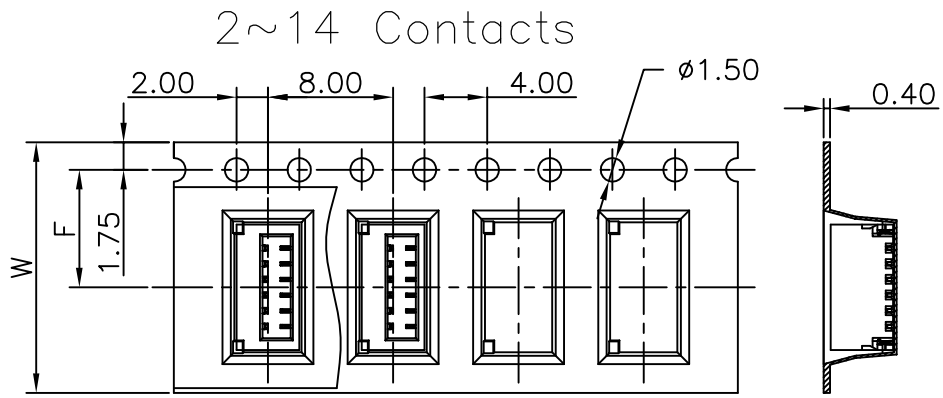
11008W00-NP-S-L1-HF-NK-R  
 ① ② ③ ④ ⑤ ⑥ ⑦ ⑧

- ① Series No.
- ② W90 : Side Contact  
W00 : Up Contact
- ③ No. of Circuits
- ④ S : SMT TYPE
- ⑤ L1: Lock TYPE
- ⑥ HF : Halogen Free
- ⑦ NK : No Mark
- ⑧ R : Tape & Reel  
(Without Cap or Mylar)

Circuits Part No	Dimensions		
	A	B	C
2P	--	2.50	4.00
3P	2.00	3.50	5.00
4P	3.00	4.50	6.00
5P	4.00	5.50	7.00
6P	5.00	6.50	8.00
7P	6.00	7.50	9.00
8P	7.00	8.50	10.00
9P	8.00	9.50	11.00
10P	9.00	10.50	12.00
11P	10.00	11.50	13.00
12P	11.00	12.50	14.00
13P	12.00	13.50	15.00
14P	13.00	14.50	16.00
15P	14.00	15.50	17.00

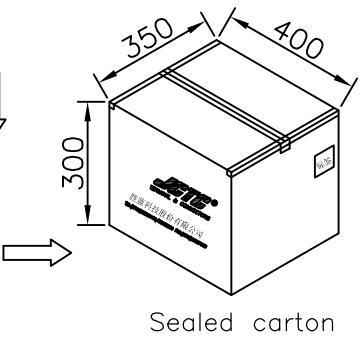
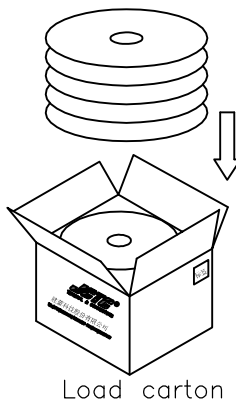
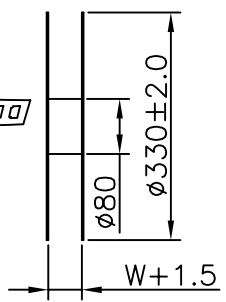
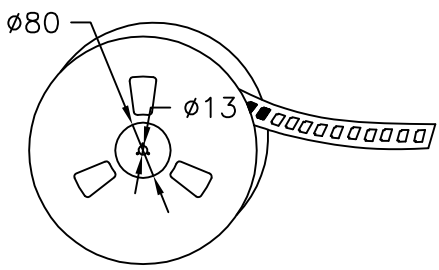
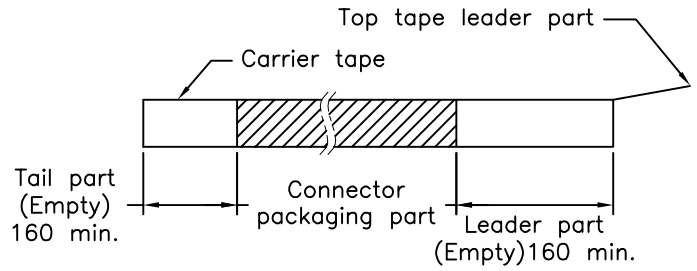
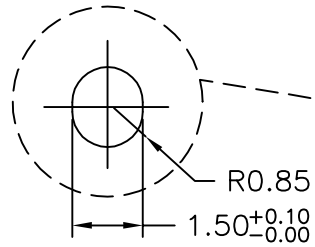
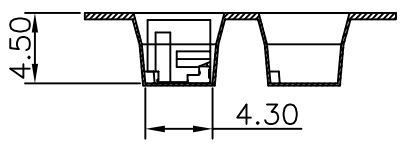
Part No.	Insulator	Contact	Solder Tabs
11008W00-NP-S-L1-HF-NK-R	PA6T,UL94V-0/Natural(Beige)	Phosphor Bronze/Matte-Tin	Brass/Matte-Tin

REV.	REVISION RECORD	DATE	UNIT: MM	GENERAL TOLERANCES	SCALE: 1:1	NAME	DATE	<b>JCTC</b> ® 胜蓝科技股份有限公司 TERMINAL&CONNECTORS 东莞市富智达电子科技有限公司	PART. NO:
A0	新图面发行	17.08.28		LINEAR	APPROVED				11008W00-NP-S-L1-XX-NK
A1	依HN1811230213设变	18.11.23		0.00±0.25	DESIGNER			DWG. NO:	
			SIZE: A4	0.00±0.15	DRAWN	罗春成	18.11.23	TITLE: 1.00mm PITCH 180° SMT WAFER	ENDE05
				0.00±0.08				REV: A1	SHEET: 1/2



Unreeling direction →

Unreeling direction →



Number of Contacts	W±0.3	F±0.1	S±0.1	Pcs/Reel	Pcs/Box
2~6P	16.00	7.50	28.40	1,500	22,500
7~14P	24.00	11.50		1,500	15,000
15P	32.00	14.20		1,500	12,000

REV.	REVISION RECORD	DATE	GENERAL TOLERANCES		SCALE:	NAME	DATE
A0	新版图面发行	17.08.28	LINEAR	ANGLES	1:1		
			0.0±0.25	X° REF±6°	APPROVED		
			UNIT: MM	0.00±0.15	X° ±3°	DESIGNER	
			SIZE: A4	0.000±0.08	X° X'±2°	DRAWN	伍文聰 17.08.28

**JCTC**® 胜蓝科技股份有限公司  
 TERMINAL&CONNECTORS 东莞市富智达电子科技有限公司

TITLE: 1.00mm PITCH 180° SMT WAFER

PART. NO: 11008W00-NP-S-L1-XX-NK  
 DWG. NO: ENDE05  
 REV: A0 SHEET: 2/2