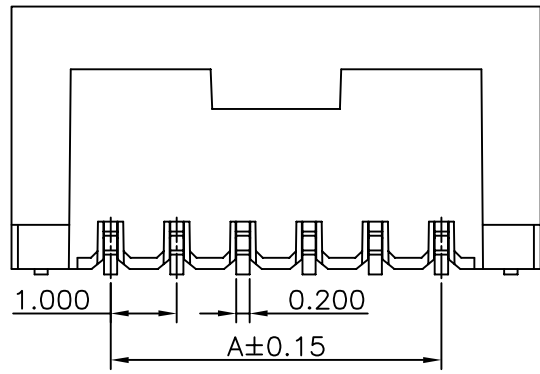
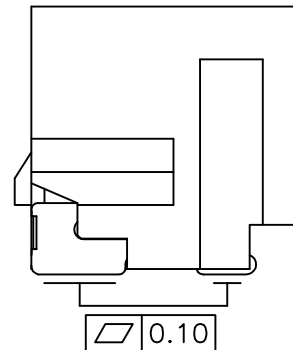
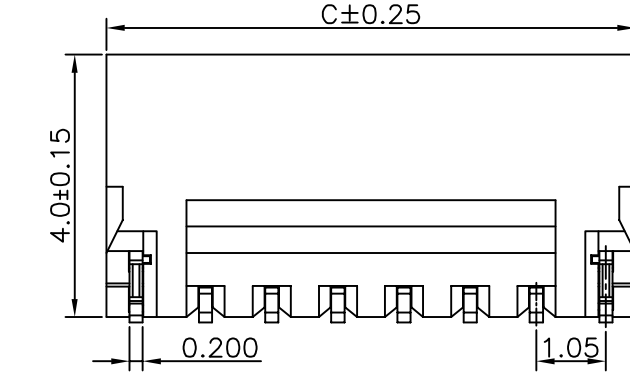


Specifications:
 Rated Voltage : 150V AC/DC
 Rated Current : 1A AC,DC
 Withstand Voltage : 500V AC/minute
 Contact Resistance : 20mΩ(MAX.)
 Insulation Resistance : 100MΩ(MIN.)
 Temperature Range : -25°C~+85°C
 The product using material and processing must conform to the "WI-PZ-142"HSF technical standard control requirements



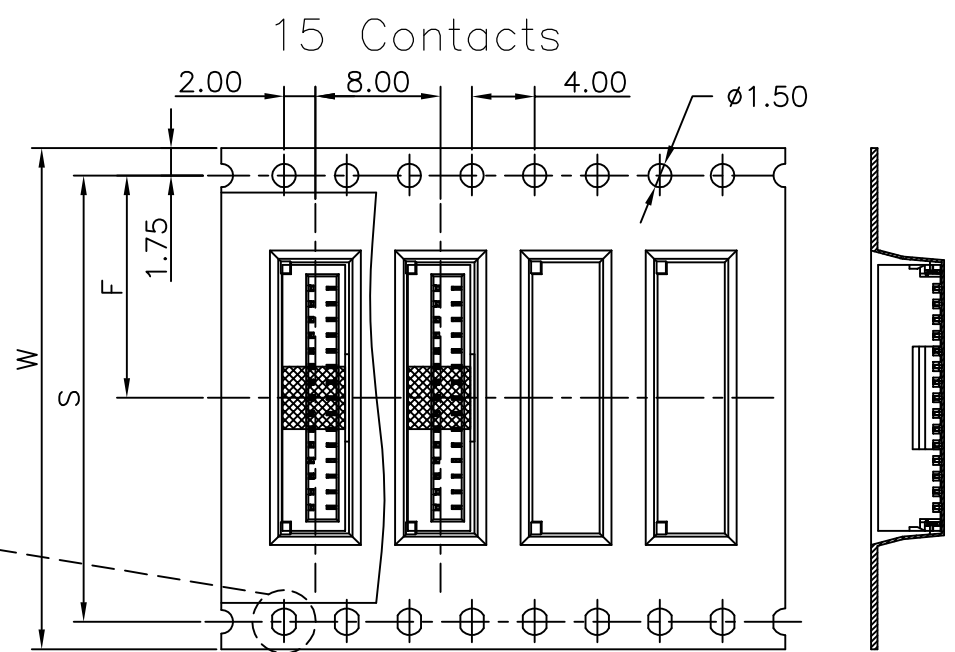
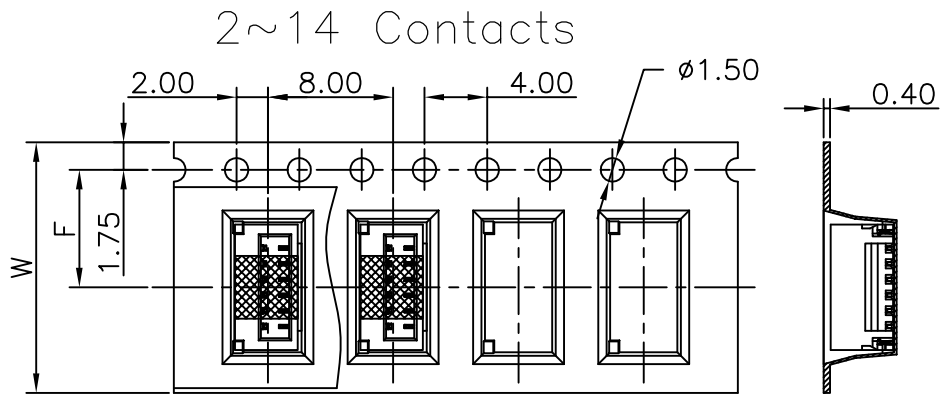
Circuits Part No	Dimensions		
	A	B	C
2P	--	2.50	4.00
3P	2.00	3.50	5.00
4P	3.00	4.50	6.00
5P	4.00	5.50	7.00
6P	5.00	6.50	8.00
7P	6.00	7.50	9.00
8P	7.00	8.50	10.00
9P	8.00	9.50	11.00
10P	9.00	10.50	12.00
11P	10.00	11.50	13.00
12P	11.00	12.50	14.00
13P	12.00	13.50	15.00
14P	13.00	14.50	16.00
15P	14.00	15.50	17.00

11008W00-NP-S-L2-HF-NK-R1
 ① ② ③ ④ ⑤ ⑥ ⑦ ⑧

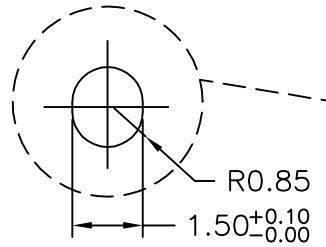
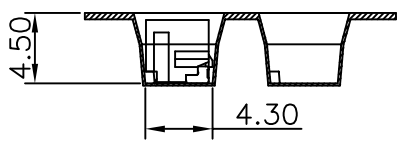
- ① Series No.
- ② W90 : Side Contact
W00 : Up Contact
- ③ No. of Circuits
- ④ S : SMT TYPE
- ⑤ L2: Lock TYPE
- ⑥ HF : Halogen Free
- ⑦ NK : No Mark
- ⑧ R1 : Tape & Reel (With Mylar)

Part No.	Insulator	Contact	Solder Tabs
11008W00-NP-S-L2-HF-NK-R1	PA6T,UL94V-0/Natural(Beige)	Phosphor Bronze/Matte-Tin	Brass/Matte-Tin

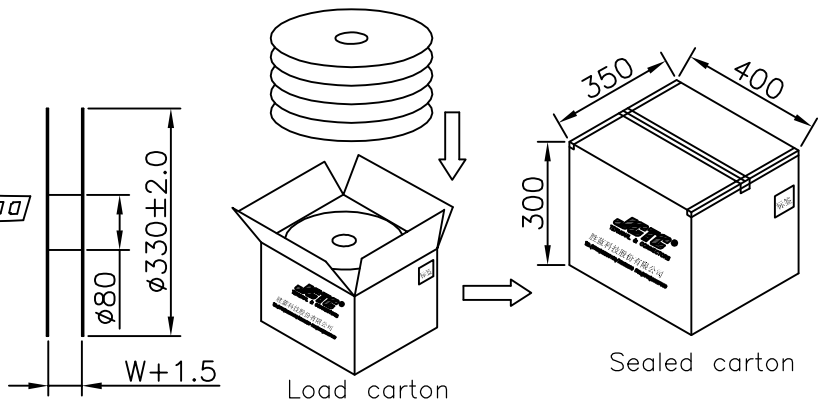
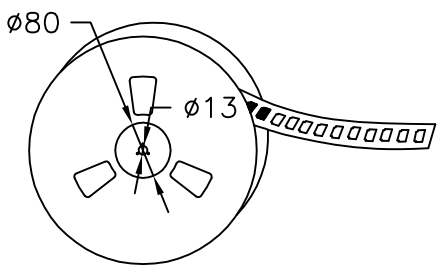
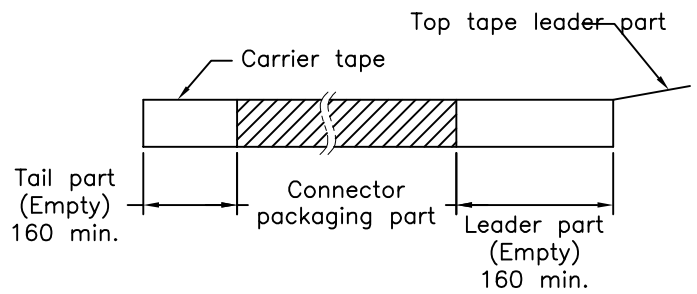
REV.	REVISION RECORD	DATE	GENERAL TOLERANCES	SCALE:	NAME	DATE	JCTC ® 胜蓝科技股份有限公司 TERMINAL&CONNECTORS 东莞市富智达电子科技有限公司	PART. NO:
A0	新图面发行	18.03.05	LINEAR	1:1				11008W00-NP-S-L2-XX-NK-R1
A1	依HN1811230213设变	18.11.23	0.0±0.25	APPROVED				DWG. NO:
			0.00±0.15	DESIGNER				ENDE05
			UNIT: MM	DRAWN	罗春成	18.11.23	TITLE: 1.00mm PITCH 180° SMT WAFER	REV: A1
			SIZE: A4					SHEET: 1/2



Unreeling direction →



Unreeling direction →



Number of Contacts	W±0.3	F±0.1	S±0.1	Pcs/Reel	Pcs/Box
2~6P	16.00	7.50	/	1,500	22,500
7~14P	24.00	11.50		1,500	15,000
15P	32.00	14.20	28.40	1,500	12,000

REV.	REVISION RECORD		DATE	UNIT: MM	GENERAL TOLERANCES		SCALE: 1:1	NAME	DATE
	新版图面发行				18.03.05	LINEAR			
A0					0.0 ± 0.25	X° REF ± 6°	APPROVED		
					0.00 ± 0.15	X° ± 3°	DESIGNER		
					SIZE: A4	0.000 ± 0.08	X° X' ± 2°	DRAWN	伍文聰 18.03.05

JCTC® 胜蓝科技股份有限公司
 TERMINAL&CONNECTORS 东莞市富智达电子科技有限公司

TITLE: 1.00mm PITCH 180° SMT WAFER

PART. NO: 11008W00-NP-S-L2-XX-NK-R1	
DWG. NO: ENDE05	
REV: A0	SHEET: 2/2