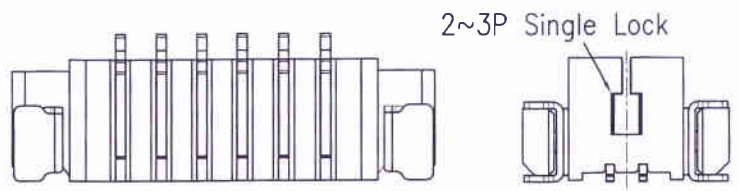


Specifications:  
 Rated Voltage : 125V AC/DC  
 Rated Current : 1A AC,DC  
 Withstand Voltage : 250V AC/minute  
 Contact Resistance : 20mΩ(MAX.)  
 Insulation Resistance : 100MΩ(MIN.)  
 Temperature Range : -25°C~+85°C  
 The product using material and processing must conform to the "WI-PZ-142" HSF technical standard control requirements

Circuits Part No	Dimensions			
	A	B	C	D
2P	--	3.23	4.35	7.85
3P	2.50	4.48	5.60	9.10
4P	3.75	5.73	6.85	10.35
5P	5.00	6.98	8.10	11.60
6P	6.25	8.23	9.35	12.85
7P	7.50	9.48	10.60	14.10
8P	8.75	10.73	11.85	15.35
9P	10.00	11.98	13.10	16.60
10P	11.25	13.23	14.35	17.85
11P	12.50	14.48	15.60	19.10
12P	13.75	15.73	16.85	20.35
13P	15.00	16.98	18.10	21.60
14P	16.25	18.23	19.35	22.85
15P	17.50	19.48	20.60	24.10
20P	23.75	25.73	26.85	30.35

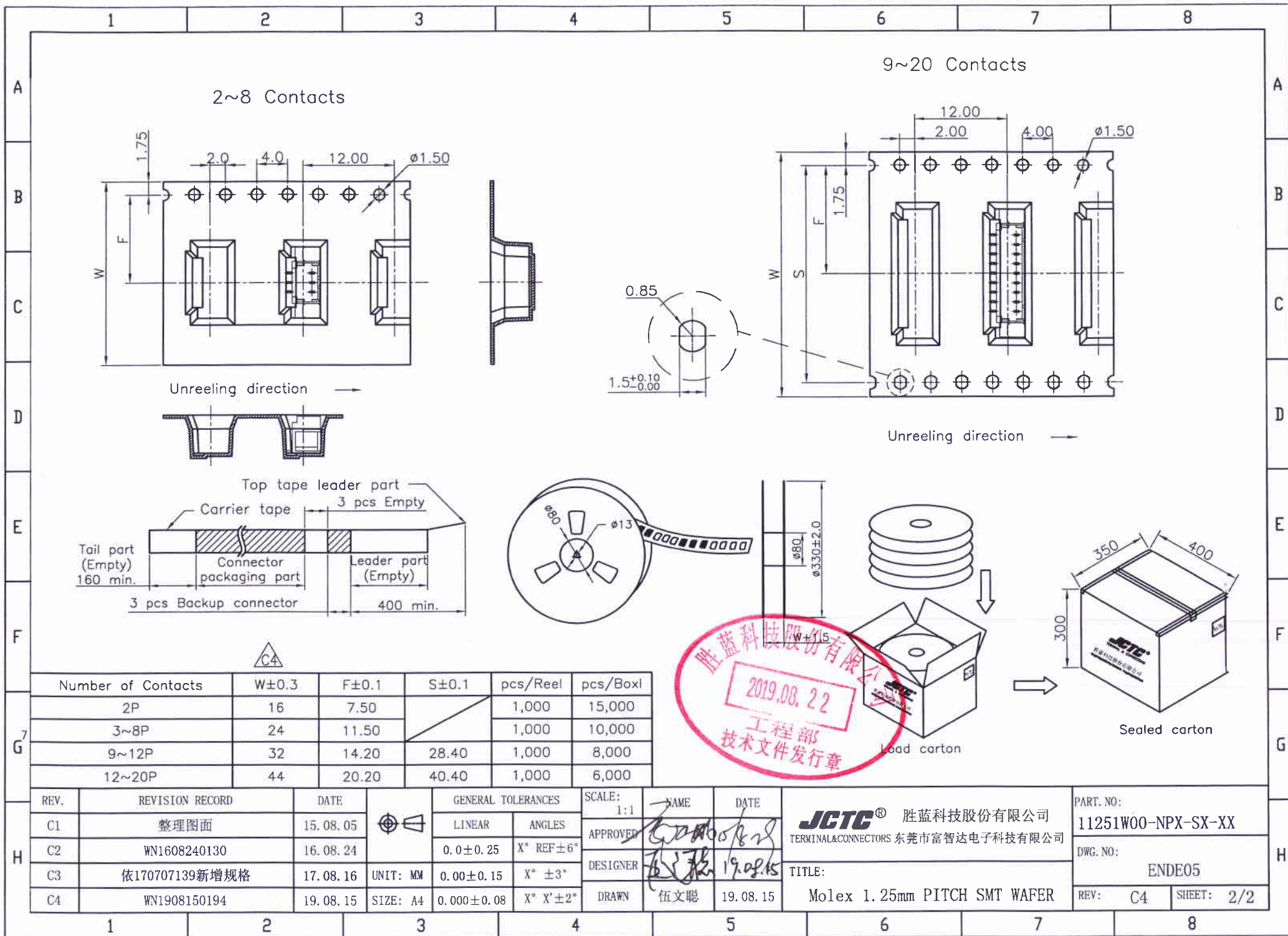


11251W00-NPX-S X-XXX-XX-R  
 ① ② ③ ④ ⑤ ⑥ ⑦ ⑧ ⑨

- ① Series No.
- ② W90 : Side Contact
- ③ No. of Circuits
- ④ X : Product color(A--Y)
- Blank : Natural type
- ⑤ S: SMT type
- ⑥ M: Matte-Tin On Pin
- ⑦ G: Gold Flash On Pin
- ⑧ 5C: Au 3u" On Contact Area
- ⑨ E: Matte-Tin On Solder Tabs
- ⑩ HF: Halogen Free
- ⑪ R : Tape & Reel

Part No.	Material	Color	Pin Material	Solder Tabs
11251W00-NP-S-R	Nylon 6T,UL94V-0	Beige	Phosphor Bronze/Tin-plated	Brass/Tin-plated
11251W00-NPE-S-R	Nylon 6T,UL94V-0	Yellow	Phosphor Bronze/Tin-plated	Brass/Tin-plated
11251W00-NP-S-HF-R	LCP,UL94V-0	Natural	Phosphor Bronze/Tin-plated	Brass/Tin-plated
11251W00-NPA-S-HF-R	LCP,UL94V-0	Black	Phosphor Bronze/Tin-plated	Brass/Tin-plated
11251W00-NPA-SM-HF-R	LCP,UL94V-0	Black	Phosphor Bronze	Brass
11251W00-NP-SM-HF-R	LCP,UL94V-0	Natural	Matte Tin-plated	Matte Tin-plated
11251W00-NP-SG-HF-R	LCP,UL94V-0	Natural	Phosphor Bronze/Gold Flash	Brass/Matte Tin-plated
11251W00-NP-S-5CE-HF-R	LCP,UL94V-0	Natural	Phosphor Bronze/Au 3u"Min	Brass/Matte Tin-plated

REV.	REVISION RECORD	DATE	GENERAL TOLERANCES	SCALE:	NAME	DATE	PART. NO.:	DWG. NO.:	JCTC® TERMINAL&CONNECTORS
C3	WN1507240119	15.08.05	LINEAR	1:1			11251W00-NPX-SX-XX	ENDE05	
C4	WN1608240130	15.08.05	0.0±0.25	APPROVED					
C5	依170707139新增规格	17.08.16	0.00±0.15	DESIGNER		20.10.21	TITLE:		
C6	换图框发行	20.10.21	0.000±0.08	DRAWN	李占梅	20.10.21	Molex 1.25mm PITCH SMT WAFER		



Number of Contacts	W±0.3	F±0.1	S±0.1	pcs/Reel	pcs/Boxl
2P	16	7.50	/	1,000	15,000
3~8P	24	11.50		1,000	10,000
9~12P	32	14.20	28.40	1,000	8,000
12~20P	44	20.20	40.40	1,000	6,000

REV.	REVISION RECORD	DATE	GENERAL TOLERANCES		SCALE:	NAME	DATE	PART. NO:	
C1	整理图面	15.08.05	 LINEAR	 ANGLES	1:1	 APPROVED	 DESIGNER	<b>JCTC</b> ® 胜蓝科技股份有限公司 TERMINAL&CONNECTORS 东莞市富智达电子科技有限公司	11251W00-NPX-SX-XX
C2	WN1608240130	16.08.24			0.0±0.25				X° REF±6°
C3	依170707139新增规格	17.08.16	0.00±0.15	X° ±3°		 DRAWN	伍文聪 19.08.15	TITLE:	Molex 1.25mm PITCH SMT WAFER
C4	WN1908150194	19.08.15	0.000±0.08	X° X'±2°				REV:	C4
								SHEET:	2/2