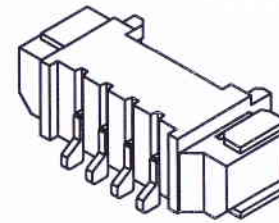
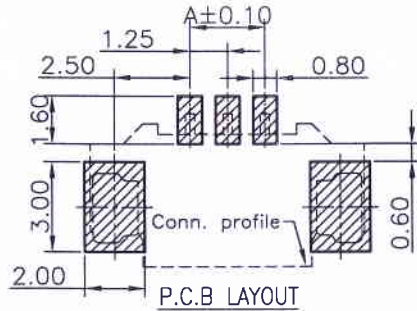
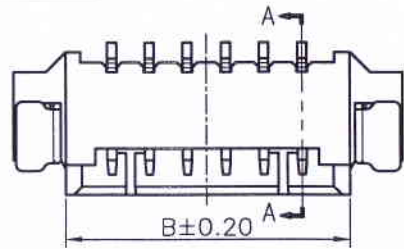
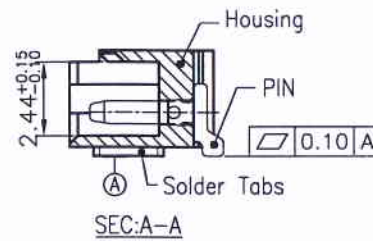
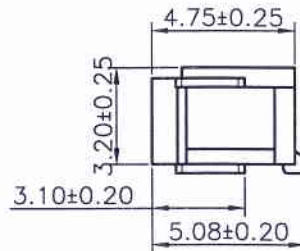
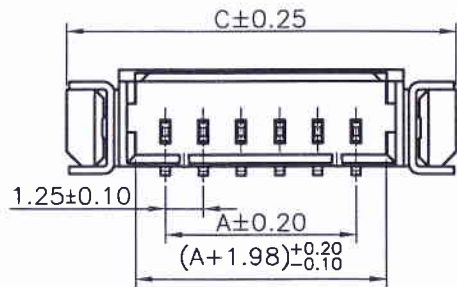


RoHS



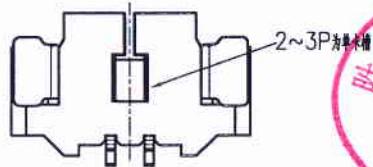
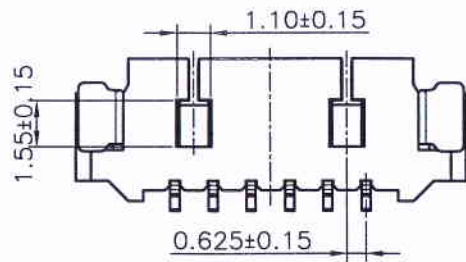
Circuits Part No	Dimensions		
	A	B	C
2P	1.25	4.35	7.85
3P	2.50	5.60	9.10
4P	3.75	6.85	10.35
5P	5.00	8.10	11.60
6P	6.25	9.35	12.85
7P	7.50	10.60	14.10
8P	8.75	11.85	15.35
9P	10.00	13.10	16.60
10P	11.25	14.35	17.85
11P	12.50	15.60	19.10
12P	13.75	16.85	20.35
13P	15.00	18.10	21.60
14P	16.25	19.35	22.85
15P	17.50	20.60	24.10
16P	18.75	21.85	25.35
17P	20.00	23.10	26.60
18P	21.25	24.35	27.85
19P	22.50	25.60	29.10
20P	23.75	26.85	30.35



Specifications:
 Rated Voltage : 125V AC/DC
 Rated Current : 1A AC,DC
 Withstand Voltage : 250V AC/minute
 Contact Resistance : 20mΩ(MAX.)
 Insulation Resistance : 100MΩ(MIN.)
 Temperature Range :-40°C~+85°C
 The product using material and processing must conform to the "WI-PZ-142"HSF technical standard control requirements

11251W90-NPX-SM-HF
 ① ② ③ ④ ⑤ ⑥

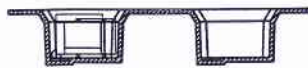
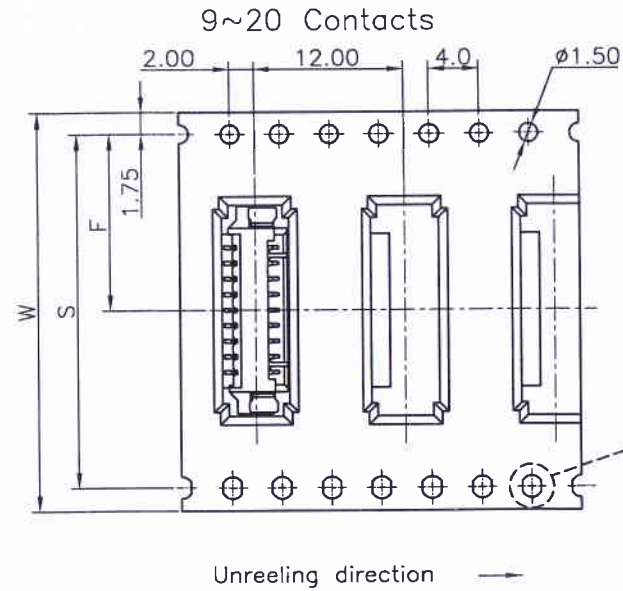
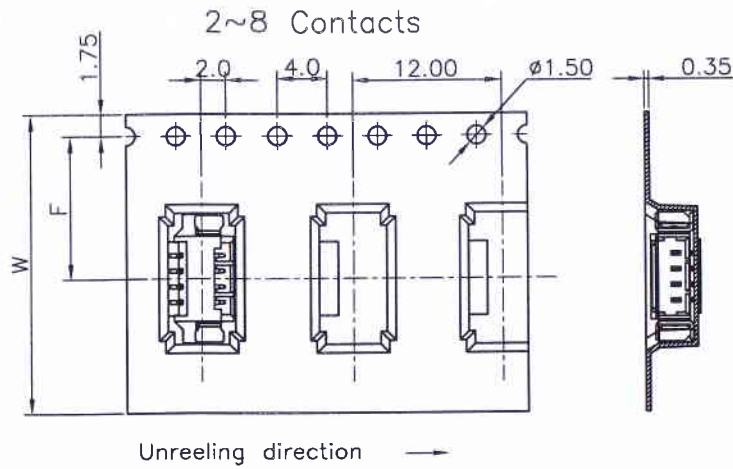
- ① Series No.
- ② W90 : Side Contact
W00 : Up Contact
- ③ No. of Circuits
- ④ X : Product color(A--Y)
Blank : Natural type
- ⑤ S: SMT type
M: Matte-Tin G: Gold Flash
5E: PIN Gold 5u"Min
- ⑥ HF: Halogen Free



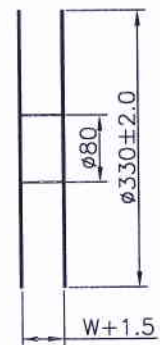
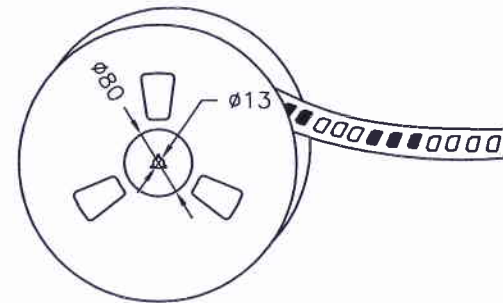
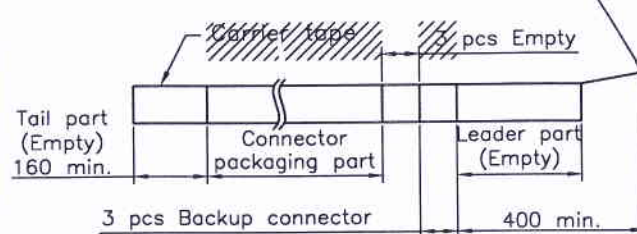
Part No.	Material	Color	Pin Material	Solder Tabs
11251W90-NP-SM	Nylon 6T,UL94V-0	本色	Phosphor Bronze/Matte Tin-plated	Brass/Matte Tin-plated
11251W90-NP-SG	Nylon 6T,UL94V-0	本色	Phosphor Bronze/Gold-plated	Brass/Tin-plated
11251W90-NP-SM-HF	LCP,UL94V-0	本色无卤	Phosphor Bronze/Matte Tin-plated	Brass/Matte Tin-plated
11251W90-NP-SG-HF	LCP,UL94V-0	本色无卤	Phosphor Bronze/Gold Flash	Brass/Matte Tin-plated

REV.	REVISION RECORD	DATE	GENERAL TOLERANCES	SCALE:	NAME	DATE	JCTC 胜蓝科技股份有限公司 TERMINAL&CONNECTORS 东莞市富智达电子科技有限公司	PART. NO:
C4	整理图面	13.01.30	LINEAR	1:1	APPROVED			11251W90-NPX-SX-XX
C5	增加镀金规格	14.03.06	0.0±0.25	X° REF±6°	DESIGNER			DWG. NO:
C6	增加"5E"规格	15.03.17	0.00±0.15	X° ±3"	DRAWN			ENDE05
D0	WN1612060193	16.12.06	0.000±0.08	X° X'±2°			TITLE: MX 1.25mm PITCH SMT WAFER	REV: D0 SHEET: 1/2

RoHS



Top tape leader part



Number of Contacts	W±0.3	F±0.1	S±0.1	Q'ty/Reel
2P	16	11.50		1,300
3P	24	11.50		1,300
4P	24	11.50		1,300
5P	24	11.50		1,300
6P	24	11.50		1,300
7P	24	11.50		1,300
8P	24	11.50		1,300
9P	32	14.20	28.40	1,300
10P	32	14.20	28.40	1,300
11P	32	14.20	28.40	1,300
12P	32	14.20	28.40	1,300
13P	44	20.20	40.40	1,300
14P	44	20.20	40.40	1,300
15P	44	20.20	40.40	1,300
20P	44	20.20	40.40	1,300

REV.	REVISION RECORD	DATE	GENERAL TOLERANCES	SCALE:	NAME	DATE	JCTC® 胜蓝科技股份有限公司	PART. NO:
C0	新图面发行	11.05.05	LINEAR	1:1			TERMINAL&CONNECTORS 东莞市富智达电子科技有限公司	11251W90-NPX-SX-XX
C1	整理图面	13.01.30	0.0±0.25	APPROVED				DWG. NO:
C2	整理图面	15.03.17	X° REF±6°	DESIGNER				ENDE05
C3	WN1612060193	16.12.06	UNIT: MM	DRAWN	邓群庄	16.12.06	TITLE: MX 1.25mm PITCH SMT WAFER	REV: C3 SHEET: 2/2
			SIZE: A4					
			0.00±0.15					
			0.000±0.08					