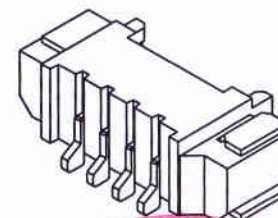
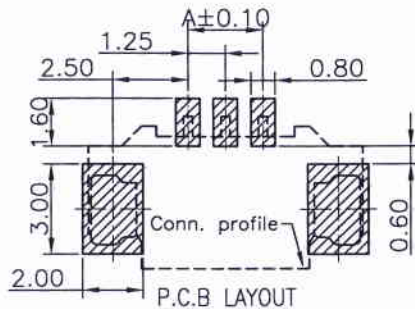
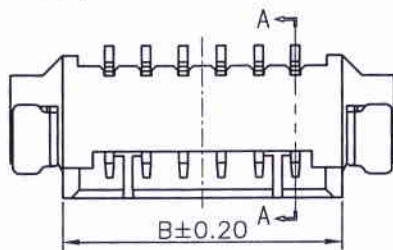
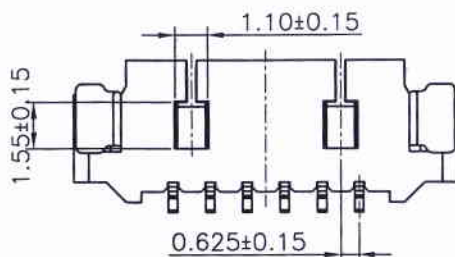
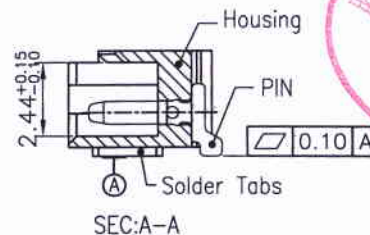
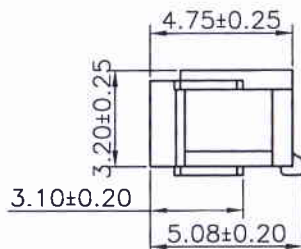
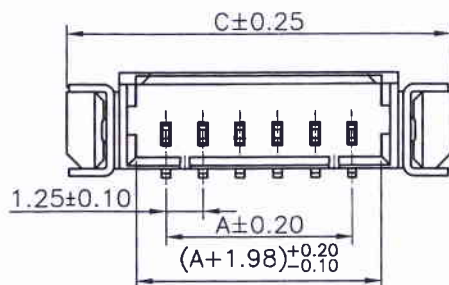


RoHS



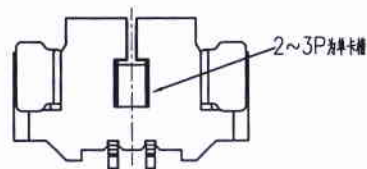
Circuits Part No	Dimensions		
	A	B	C
2P	1.25	4.35	7.85
3P	2.50	5.60	9.10
4P	3.75	6.85	10.35
5P	5.00	8.10	11.60
6P	6.25	9.35	12.85
7P	7.50	10.60	14.10
8P	8.75	11.85	15.35
9P	10.00	13.10	16.60
10P	11.25	14.35	17.85
11P	12.50	15.60	19.10
12P	13.75	16.85	20.35
13P	15.00	18.10	21.60
14P	16.25	19.35	22.85
15P	17.50	20.60	24.10
16P	18.75	21.85	25.35
17P	20.00	23.10	26.60
18P	21.25	24.35	27.85
19P	22.50	25.60	29.10
20P	23.75	26.85	30.35



Specifications:  
 Rated Voltage : 125V AC/DC  
 Rated Current : 1A AC,DC  
 Withstand Voltage : 250V AC/minute  
 Contact Resistance : 20mΩ(MAX.)  
 Insulation Resistance : 1000MΩ(MIN.)  
 Temperature Range :-40°C~+85°C

11251W90-NPX-SM-9T-HF  
 ① ② ③④ ⑤ ⑥ ⑦

- ① Series No.
- ② W90 : Side Contact  
W00 : Up Contact
- ③ No. of Circuits
- ④ X : Product color(A--Y)  
Blank : Natural type
- ⑤ S: SMT type
- ⑥ 9T : Nylon 9T  
Blank : Nylon 6T
- ⑦ HF: Halogen Free

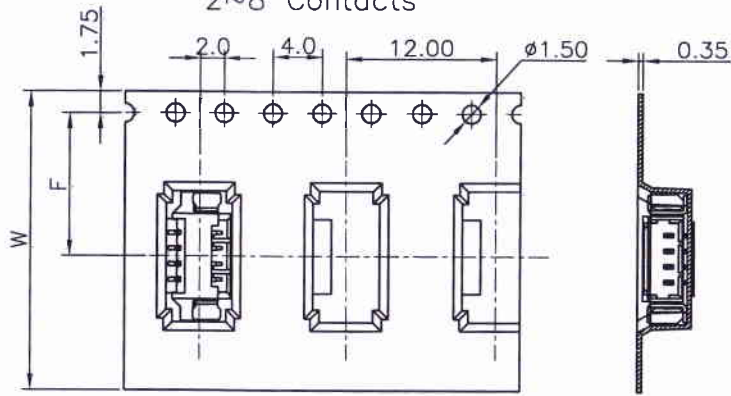


Part No.	Material	Color	Pin Material	Solder Tabs
11251W90-NP-S	Nylon 6T,UL94V-0	本色	Phosphor Bronze/Tin-plated	Brass/Tin-plated
11251W90-NPE-S	Nylon 6T,UL94V-0	黄色	Phosphor Bronze/Tin-plated	Brass/Tin-plated
11251W90-NP-S-9T	Nylon 9T,UL94V-0	本色	Phosphor Bronze/Tin-plated	Brass/Tin-plated
11251W90-NP-S-HF	LCP,UL94V-0	本色无卤	Phosphor Bronze/Tin-plated	Brass/Tin-plated
11251W90-NP-S-5E-HF	LCP,UL94V-0	本色无卤	Phosphor Bronze/Au 5u"	Brass/Matte Tin-plated

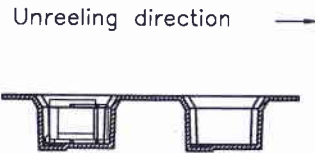
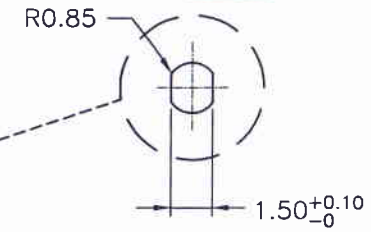
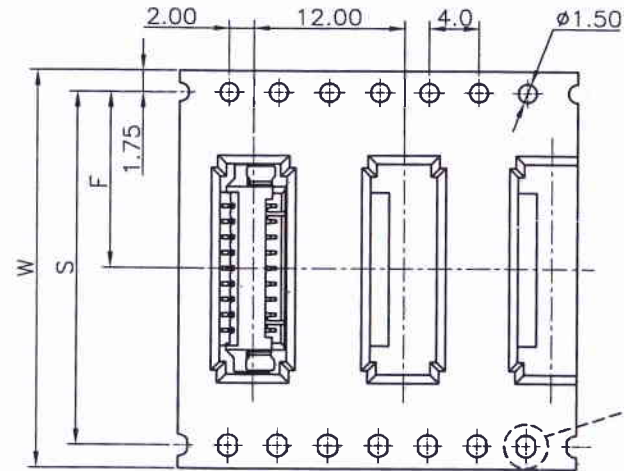
REV.	REVISION RECORD	DATE	GENERAL TOLERANCES	SCALE:	NAME	DATE	<b>JCTC</b> ® 胜蓝科技股份有限公司 TERMINAL&CONNECTORS 东莞市富智达电子科技有限公司 TITLE: MX 1.25mm PITCH SMT WAFER	PART. NO:
AO	新图面发行	16.12.06	LINEAR	1:1	APPROVED			11251W90-NPX-S-XX
			0.0±0.25	ANGLES	DESIGNER			DWG. NO:
			0.00±0.15	X° REF±6°	DRAWN			ENDE05
			0.000±0.08	X° ±3°		16.12.06	REV: AO	
			0.000±0.08	X° X'±2°			SHEET: 1/2	

RoHS

2~8 Contacts

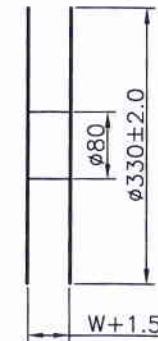
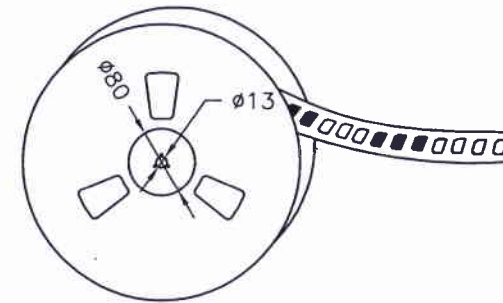
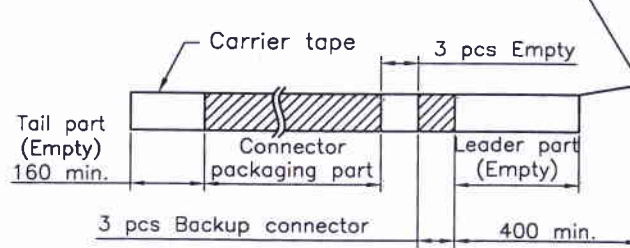


9~20 Contacts



Unreeling direction →

Top tape leader part



Number of Contacts	W±0.3	F±0.1	S±0.1	Q'ty/Reel
2P	24	11.50		1,500
3P	24	11.50		1,500
4P	24	11.50		1,500
5P	24	11.50		1,500
6P	24	11.50		1,500
7P	24	11.50		1,500
8P	24	11.50		1,500
9P	32	14.20	28.40	1,500
10P	32	14.20	28.40	1,500
11P	32	14.20	28.40	1,500
12P	32	14.20	28.40	1,500
13P	44	20.20	40.40	1,500
14P	44	20.20	40.40	1,500
15P	44	20.20	40.40	1,500
20P	44	20.20	40.40	1,500

REV.	REVISION RECORD	DATE	GENERAL TOLERANCES	SCALE:	NAME	DATE	PART. NO: 11251W90-NPX-S-XX
A0	新图面发行	16.12.06	LINEAR 0.0±0.25	1:1	APPROVED		
			ANGLES X° REF±6°		DESIGNER	16.12.06	REV: A0 SHEET: 2/2
			UNIT: MM 0.00±0.15		DRAWN	邓群庄	TITLE: MX 1.25mm PITCH SMT WAFER
			SIZE: A4 0.000±0.08				

**JCTC** 胜蓝科技股份有限公司  
TERMINAL&CONNECTORS 东莞市富智达电子科技有限公司