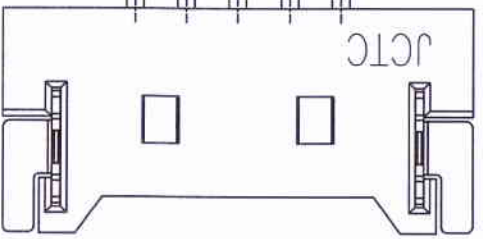
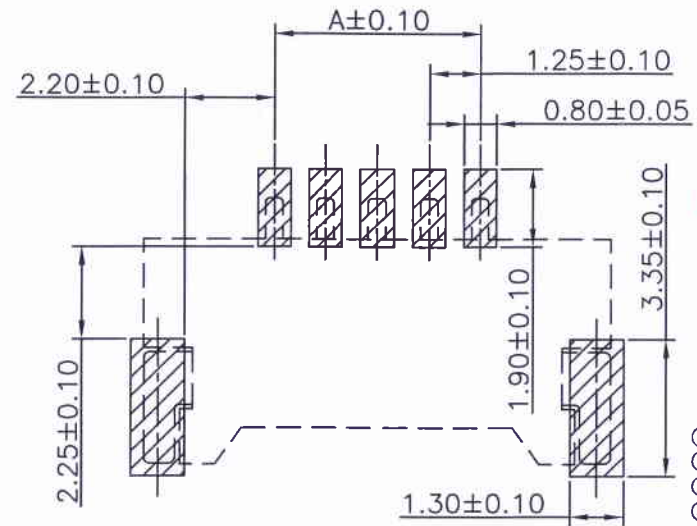
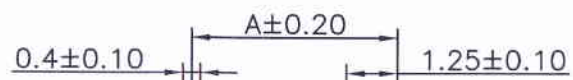
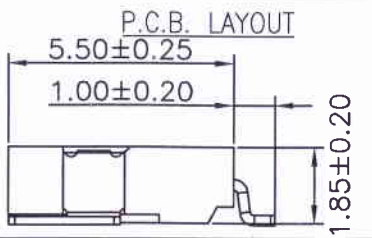
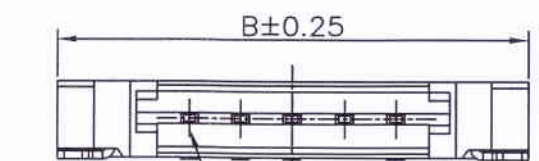


SPECIFICATIONS
 Current Rating: 1A AC,DC
 Voltage Rating: 125V AC,DC
 Temperature Range: -25°C ~ +85°C
 Contact Resistance: 20mΩ Max.
 Insulation Resistance: 100MΩ Min.
 Withstanding Voltage: 500V AC/minute
 Contact: Phosphor Bronze/Gold Flash
 Solder Tabs: Brass/Gold Flash
 Insulator: Thermal Plasticity Resin, UL 94V-0
 Halogen Free
 Color: Natural(Beige)
 The product using material and processing must conform to the "WI-PZ-142"HSF technical standard requirements



4~30P双卡槽



11255W90-NP X-S-5H-HF
 ① ② ③ ④ ⑤ ⑥ ⑦
 ① Series No.
 ② W90 : Side Contact
 ③ No. of Circuits
 ④ X : Product color(A--Y)
 A : Black
 ⑤ S : SMT Type
 ⑥ 5H :PIN Gold Plated(Au:30u")
 5F :PIN Gold Plated(Au:10u")
 5AE : PIN Gold Plated,
 Sold Tin Plated,
 ⑦ HF : Halogen Free

Circuits	Dimensions	
	A	B
2P	--	7.65
3P	2.50	8.90
4P	3.75	10.15
5P	5.00	11.40
6P	6.25	12.65
7P	7.50	13.90
8P	8.75	15.15
9P	10.00	16.40
10P	11.25	17.65
11P	12.50	18.90
12P	13.75	20.15
14P	16.25	22.65
15P	17.50	23.90
16P	18.75	25.15
20P	23.75	30.15
30P	36.25	42.65

Part No.	Material	Color	Pin Material	Solder Tabs
11255W90-NP-S-5H-HF	High temperature plastic,UL94V-0	Natural(Beige)	Phosphor Bronze/Gold 30u*	Brass/Gold-plated
11255W90-NPA-S-5AE-HF	High temperature plastic,UL94V-0	Black	Phosphor Bronze/Gold-plated	Brass/Tin-plated
11255W90-NP-S-5F-HF	High temperature plastic,UL94V-0	Natural(Beige)	Phosphor Bronze/Gold 10u*	Brass/Gold-plated

REV.	REVISION RECORD	DATE	
A0	新图面发行	15.01.08	
A1	变更公司名称	17.04.05	
A2	依WN1903080040设变	19.03.08	

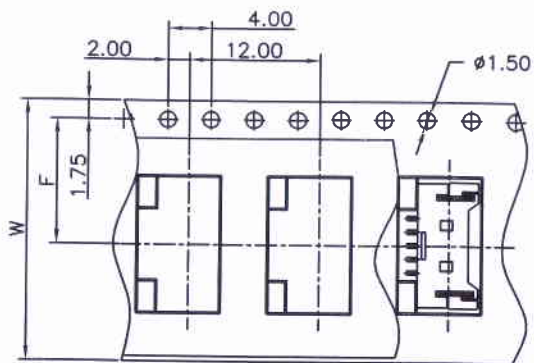
GENERAL TOLERANCES		SCALE:	NAME	DATE
LINEAR	ANGLES	1:1		
0.0±0.25	X° REF±6°	APPROVED		
0.00±0.15	X° ±3°	DESIGNER		17.02.08
0.000±0.08	X° X'±2°	DRAWN	罗春成	19.03.08

JCTC® 胜蓝科技股份有限公司
 TERMINAL&CONNECTORS 东莞市富智达电子科技有限公司
 TITLE: 1.25mm PITCH 90° SMT TYPE WAFER

PART NO:	11255W90-NPX-S-XX-HF
DWG. NO:	ENDE05
REV:	A2
SHEET:	1/2

11255W90 SERIES

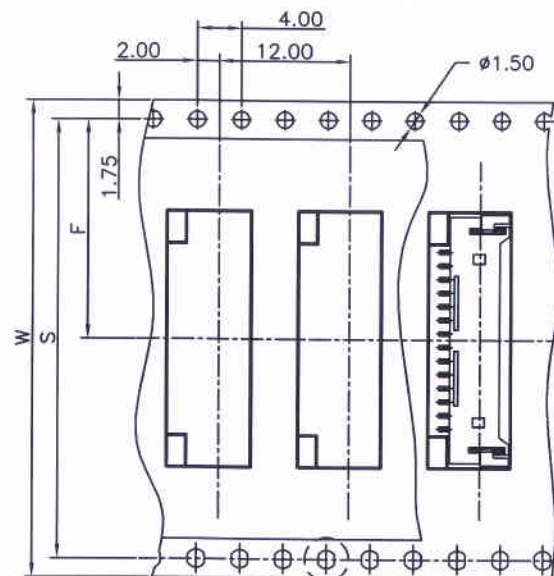
2~8 Contacts



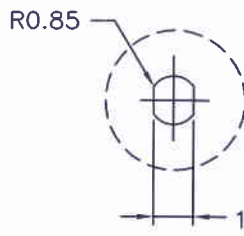
Unreeling direction →



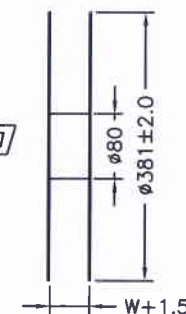
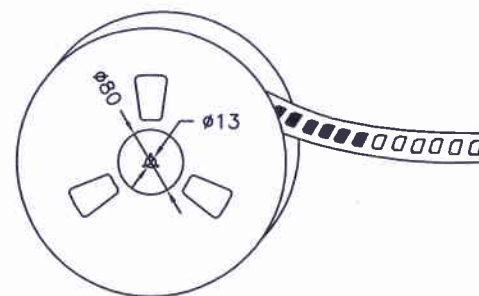
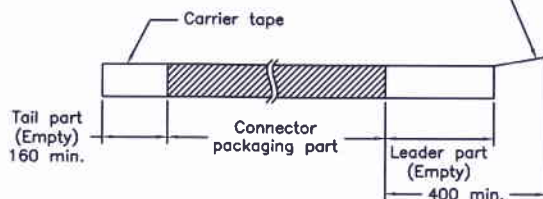
9~30 Contacts



Unreeling direction →



Top tape leader part



Number of Contacts	W±0.3	F±0.1	S±0.1	Q'ty/Reel
2P	16	7.50	--	2,000
3~8P	24	11.50	--	2,000
9~12P	32	14.20	28.40	2,000
13~20P	44	20.20	40.40	2,000
30P	56	26.20	52.40	2,000

REV.	REVISION RECORD	DATE
A0	新图面发行	16.04.27
A1	更换公司名称	17.03.30

GENERAL TOLERANCES		SCALE:	NAME	DATE
LINEAR	ANGLES	1:1		
0.0 ± 0.25	X° REF ± 6°	APPROVED		
UNIT: MM	0.00 ± 0.15	DESIGNER		
SIZE: A4	0.00 ± 0.08	DRAWN		

JCTC 胜蓝科技股份有限公司	PART. NO:
TERMINAL&CONNECTORS 东莞市富智达电子科技有限公司	11255W90-NP-S-HF
TITLE:	DWG. NO:
1.25mm PITCH 90° SMT TYPE WAFER	ENDE05
	REV: A1 SHEET: 2/2

1

2

3

4

5

6

7

8