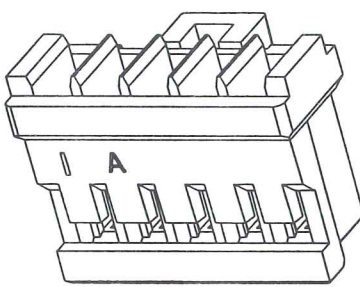
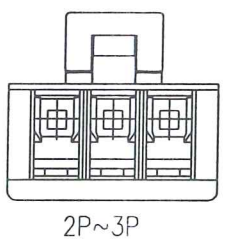
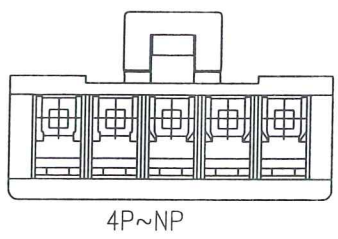
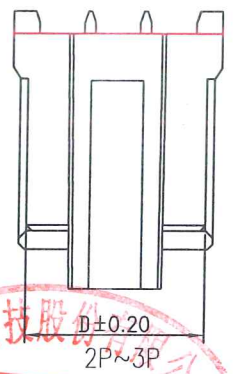
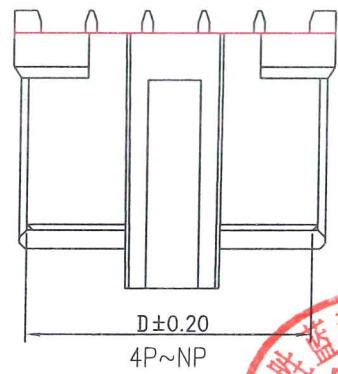
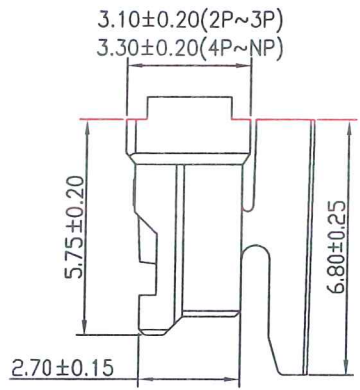
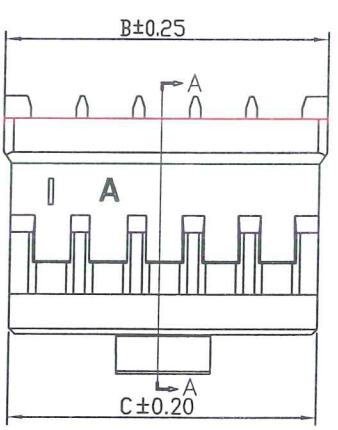


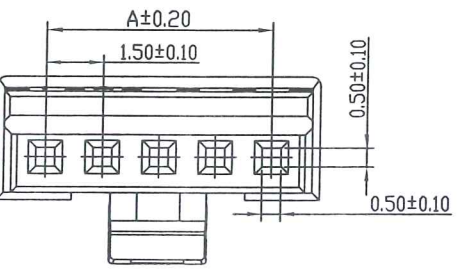
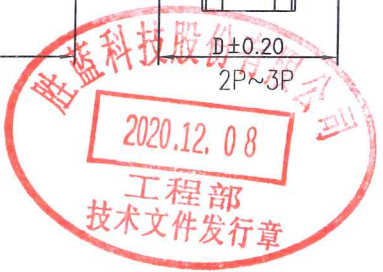
1 2 3 4 5 6 7 8



Specifications:
 Rated Voltage : 250V AC/DC
 Rated Current : 3A AC,DC
 Withstand Voltage : 500V AC/minute
 Contact Resistance : 20mΩ(MAX.)
 Insulation Resistance : 1000MΩ(MIN.)
 Temperature Range : -25°C~+85°C
 The product using material and processing must conform to the "WI-PZ-142" HSF technical standard control requirements



Part No	Dimensions			
	A	B	C	D
2P	--	4.10	3.70	3.30
3P	3.00	5.60	5.20	4.80
4P	4.50	7.10	6.70	6.30
5P	6.00	8.60	8.20	7.80
6P	7.50	10.10	9.70	9.30
7P	9.00	11.60	11.20	10.80
8P	10.50	13.10	12.70	12.30
9P	12.00	14.60	14.20	13.80
10P	13.50	16.10	15.70	15.30
11P	15.00	17.60	17.20	16.80
12P	16.50	19.10	18.70	18.30
13P	18.00	20.60	20.20	19.80
14P	19.50	22.10	21.70	21.30
15P	21.00	23.60	23.20	22.80



Suitable for JCTC 11500 series terminal

Part No.	Material	Color
11500H00-NPA-L-HF-NK	Nylon 66,UL 94V-0	Black
11500H00-NP-L-HF-NK	Nylon 66,UL 94V-0	Natural(White)

REV.	REVISION RECORD	DATE	GENERAL TOLERANCES	SCALE:	NAME	DATE	PART. NO:	DWG. NO:	JCTC® TERMINAL&CONNECTORS
AO	新版发行	20.12.04	LINEAR 0.0±0.25	1:1	张振坤	20.12.04	11500H00-NPX-L-HF-NK	ENDE05	
			ANGLES 0.00±0.15		张振坤	20.12.04	TITLE: 1.50mm PITCH HOUSING		
			0.00±0.08		张振坤	20.12.04			
			UNIT: MM						
			SIZE: A4						
								REV: AO	
								SHEET: 1/1	

1 2 3 4 5 6 7 8