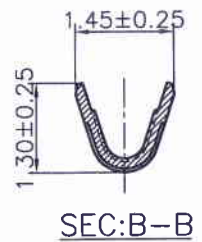
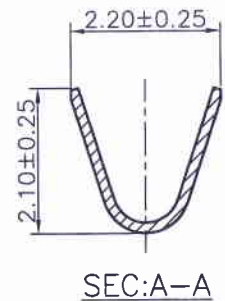
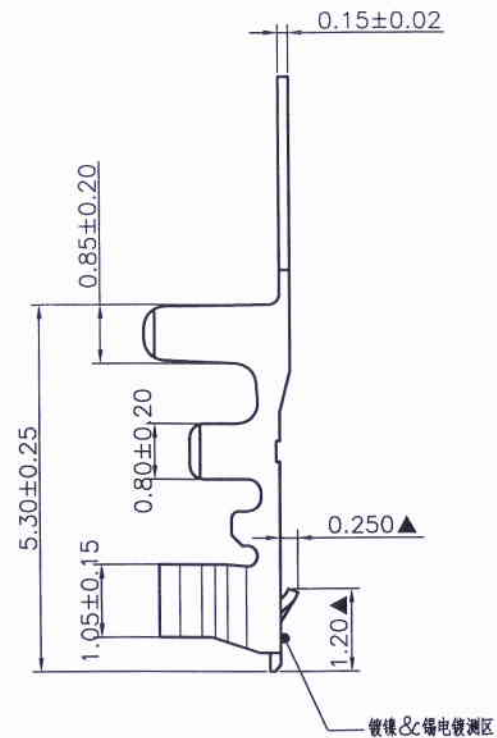
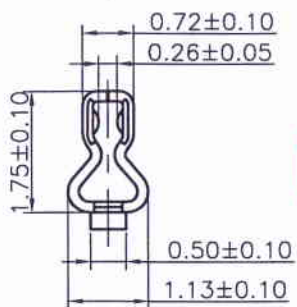
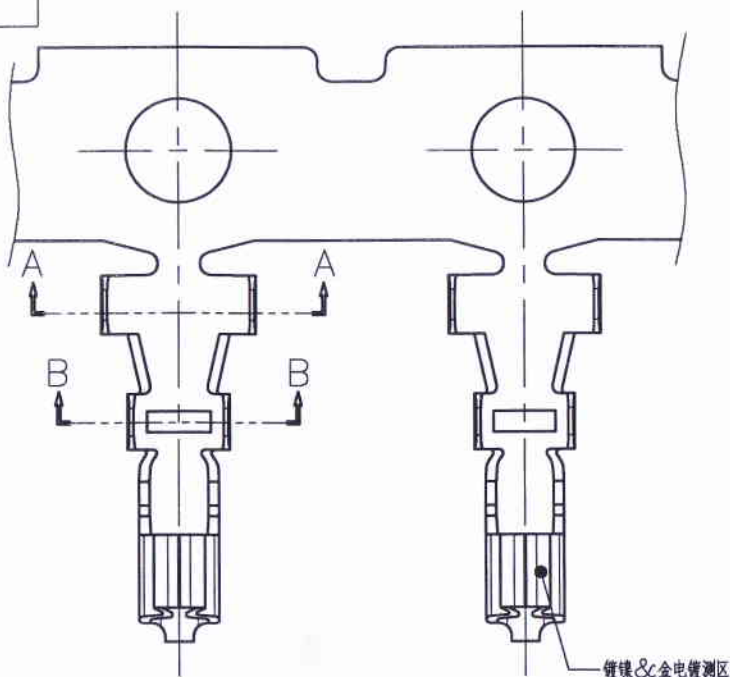


RoHS



Note: 11500TOP-XX-NK-HQ

- Finish
- 2E--Stamping before Tin-plated
  - 0A--Gold-flash    0B--2u"    0C--3u"
  - 0D--4u"    0E--5u"    0F--10u"
  - 0G--15u"    0H--30u"    0I--50u"

Part No	Wire Range	Insulation O.D.	Material	Finish	Qty/reel
11500TOP-2E-NK-HQ	AWG#24~#30	1.10mm(max)	Phosphor Bronze	TIN-plated	15,000 pcs
11500TOP-0X-NK-HQ	AWG#24~#30	1.10mm(max)	Phosphor Bronze	Gold-plated contact area	15,000 pcs

REV.	REVISION RECORD		DATE	GENERAL TOLERANCES		SCALE: 1:1	NAME	DATE	PART. NO: 11500TOP-XX-NK-HQ
	REV.	REVISION RECORD		LINEAR	ANGLES				
C0	14.03.27	14.03.27	0.0±0.25	X° REF±6°	DESIGNER	17.03.22	<b>JCTC</b> ® 胜蓝科技股份有限公司 TERMINAL&CONNECTORS 东莞市富智达电子科技有限公司	DWG. NO: ENDE05	
C1	修改包装数量	15.01.09	0.00±0.15	X° ±3°	DRAWN	17.03.22			
C2	变更公司名称	17.03.22	0.000±0.08	X° X'±2°	Molex 1.5 端子				
UNIT: MM		SIZE: A4					REV: C2 SHEET: 1/1		