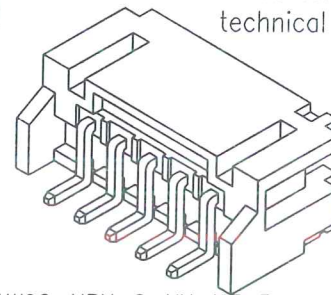


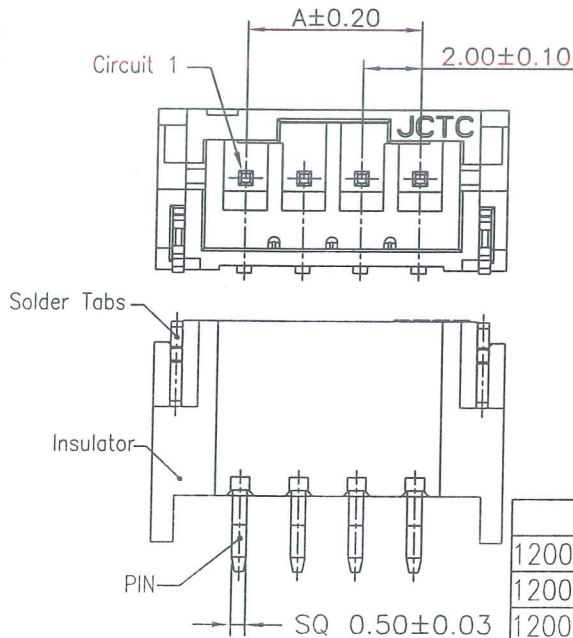
Specifications:  
 Rated Voltage : 100V AC/DC  
 Rated Current : 2A AC,DC  
 Withstand Voltage : 800V AC/minute  
 Contact Resistance : 10mΩ(Max.)  
 Insulation Resistance : 1000MΩ(Min.)  
 Temperature Range : -25°C~+85°C  
 The product using material and processing must conform to the "WI-PZ-142"HSF technical standard control requirements



PART NO.	Dimensions	
	A	B
2P	--	8.00
3P	4.00	10.00
4P	6.00	12.00
5P	8.00	14.00
6P	10.00	16.00
7P	12.00	18.00
8P	14.00	20.00
9P	16.00	22.00
10P	18.00	24.00
11P	20.00	26.00
12P	22.00	28.00
13P	24.00	30.00
14P	26.00	32.00
15P	28.00	34.00
16P	30.00	36.00

12001W90-NPX-S-XX-HF-R  
 ① ② ③④⑤⑥⑦⑧

- ① Series No.
- ② W90 : Side Contact  
W00 : Up Contact
- ③ No. of Circuits
- ④ X: Product color (A--Y)  
Blank : Natural type
- ⑤ S: SMT Type
- ⑥ XX : PIN Plated
- ⑦ HF: Halogen Free
- ⑧ R : Tape & Reel(Without Cap or Mylar)

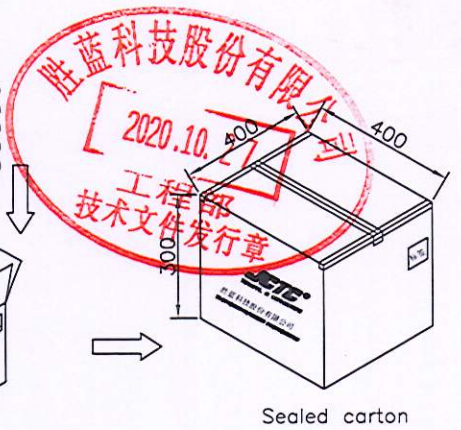
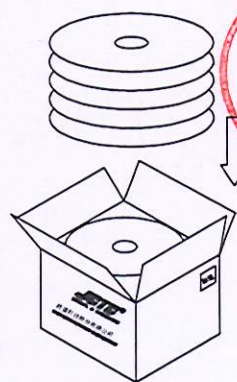
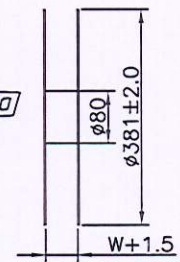
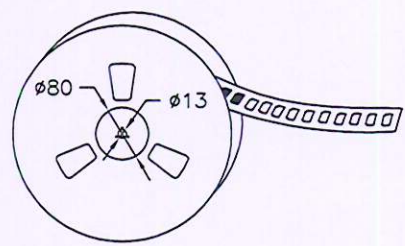
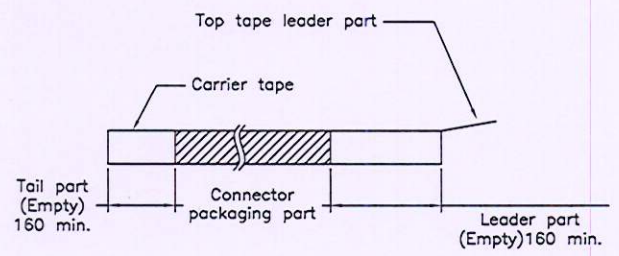
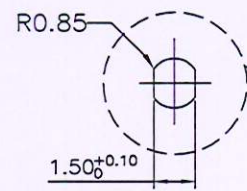
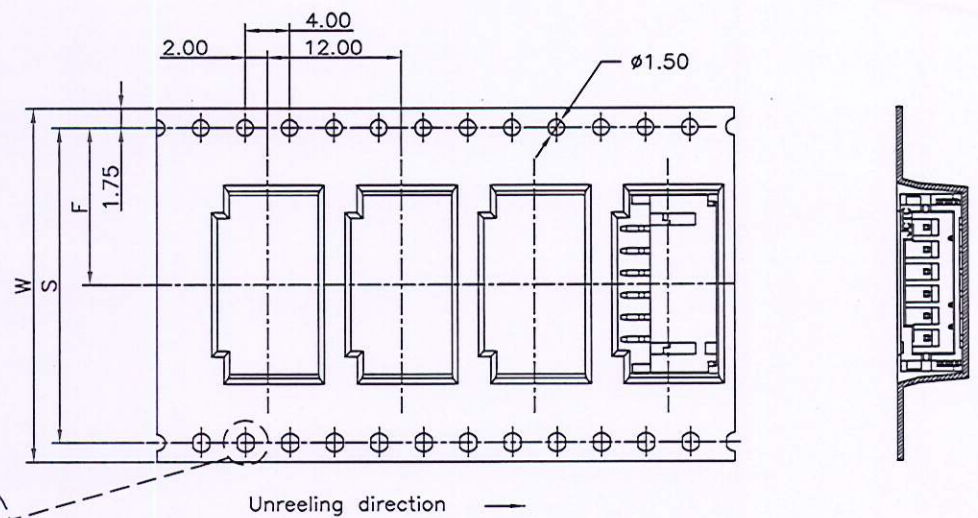
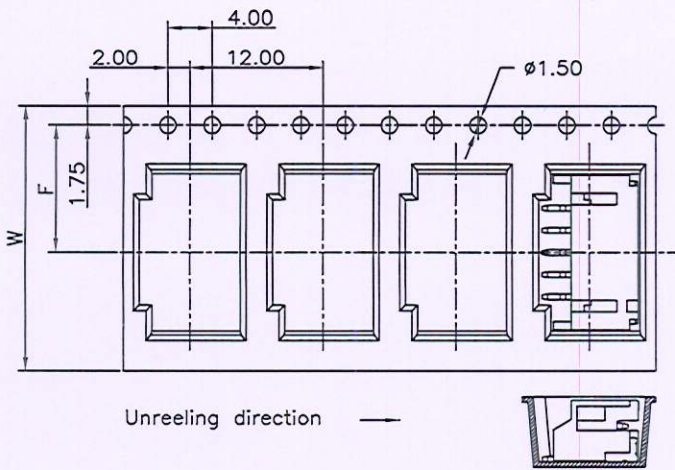


Part No.	Material	Color	PIN Material	Solder Tabs
12001W90-NP-S-R	High temperature plastic,UL94V-0	Natural(Beige)	Brass/Tin-plated	Brass/Tin-plated
12001W90-NP-S-3E-R	High temperature plastic,UL94V-0	Natural(Beige)	Brass/Matte Tin-plated	Brass/Tin-plated
12001W90-NP-S-HF-R	High temperature plastic,UL94V-0	Natural(Beige)	Brass/Tin-plated	Brass/Tin-plated
12001W90-NP-S-5A-HF-R	High temperature plastic,UL94V-0	Natural(Beige)	Brass/Gold-plated	Brass/Tin-plated
12001W90-NPA-S-HF-R	High temperature plastic,UL94V-0	Black	Brass/Tin-plated	Brass/Tin-plated

REV.	REVISION RECORD	DATE	GENERAL TOLERANCES	SCALE:	NAME	DATE	PART NO.:	DWG. NO.:	 <b>TERMINAL&amp;CONNECTORS</b>
C2	更新公司名称	17.05.04	LINEAR	1:1			12001W90-NPX-S-XX	ENDE05	
C3	WN2008070199	19.12.02	ANGLES	APPROVED	Nelson	21.05.18			
C4	WN2010230301	20.10.23	0.0±0.25 X° REF±6°	DESIGNER	WU	21.05.18	TITLE:		
C5	WN2105180127	21.05.18	0.00±0.15 X° ±3°	DRAWN	QYX	21.05.18	2.00mm PITCH 90° SMT TYPE WAFER		
			0.000±0.08 X° X'±2°						REV: C5 SHEET: 1/2

1 2 3 4 5 6 7 8

A 2~5 Contacts 6~16 Contacts A



Number of Contacts	W±0.3	F±0.1	S±0.1	Q'ty/Reel	Q'ty/Box
2~5P	24	11.50	--	1,000	10,000
6~8P	32	14.20	28.40	1,000	8,000
9~12P	44	20.20	40.40	1,000	6,000
13~16P	56	26.20	52.40	1,000	5,000

REV.	REVISION RECORD	DATE	UNIT	GENERAL TOLERANCES	SCALE:	NAME	DATE	PART. NO:	DWG. NO:	 <b>JCTC</b> ® TERMINAL&CONNECTORS	
C0	新图面发行	14.05.05		LINEAR	1:1			12001W90-NP-S-XX	ENDE05		
C1	修证2P载带宽度	16.01.20		0.0±0.25	APPROVED	张振坤	20.10.15				
C2	更新公司名称	17.05.04	MM	X° REF±6°	DESIGNER	张振坤	20.10.23				
C3	WN2010230301	20.10.23	A4	X° X'±2°	DRAWN	张振坤	20.10.23	TITLE: 2.00mm PITCH 90° SMT TYPE WAFER			
										REV: C3	SHEET: 2/2

1 2 3 4 5 6 7 8

H

H