

1 2 3 4 5 6 7 8

A

A

B

B

C

C

D

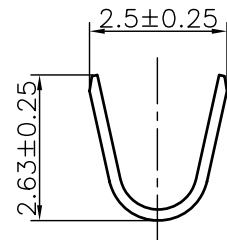
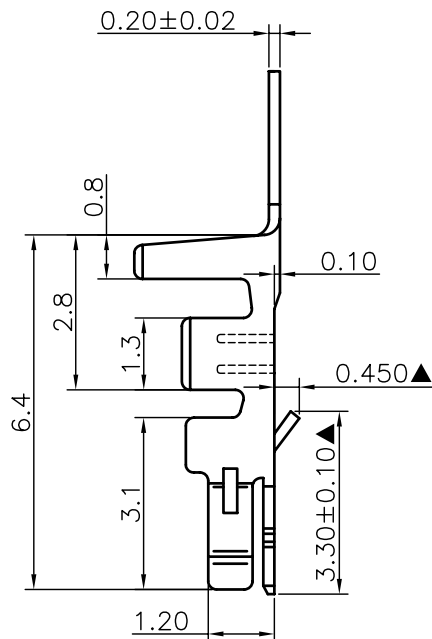
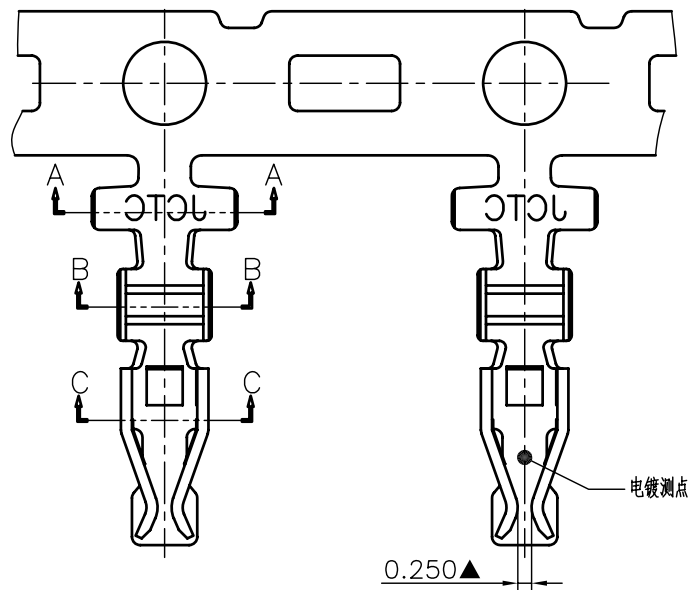
D

E

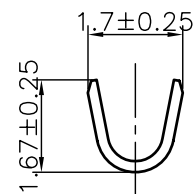
E

F

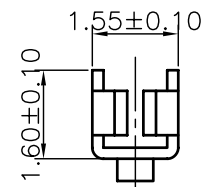
F



Section A-A



Section B-B



Section C-C

Specification & Ordering Information:

Part No	Wire Range	Insulation O.D.	Material	Finish	Qty/reel	Note
12002T2P-2	AWG #22~#24	1.70mm(max)	Phosphor Bronze	Tin-plated	10,000 PCS	Stamping after plating
12002T2P-2-NK	AWG #22~#24	1.70mm(max)	Phosphor Bronze	Tin-plated	10,000 PCS	Stamping after plating
12002T2P-2E-NK	AWG #22~#24	1.70mm(max)	Phosphor Bronze	Tin-plated	10,000 PCS	Plating after Stamping

The product using material and processing must conform to the "WI-PZ-142" HSF technical standard control requirements

REV.	REVISION RECORD	DATE	GENERAL TOLERANCES		SCALE:	NAME	DATE	<b>JCTC</b> ® 胜蓝科技股份有限公司 TERMINAL&CONNECTORS 东莞市富智达电子科技有限公司	PART. NO:
C0	新图面发行	12. 02. 24	LINEAR	ANGLES	1:1				12002T2P-X-XX
C1	增加“2E”规格	15. 04. 15	0.0±0.25	X° REF±6°	APPROVED			DWG. NO:	
C2	更新公司名称	17. 03. 03	0.00±0.15	X° ±3°	DESIGNER			ENDE05	
			UNIT: MM	X° X'±2°	DRAWN	伍文聪	17. 03. 03	TITLE: PHD2.0 高脚端子	REV: C2
			SIZE: A4	0.000±0.08				SHEET: 1/1	

1 2 3 4 5 6 7 8

H

H