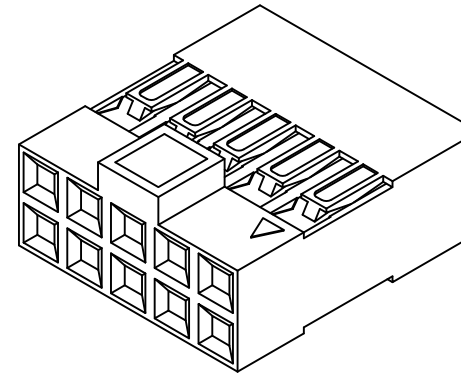
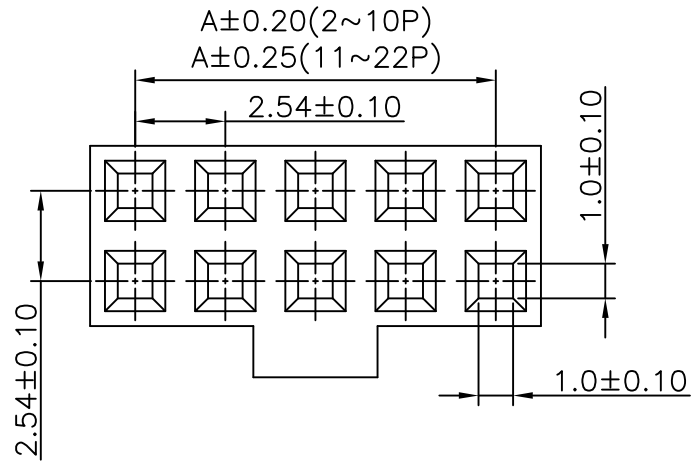


RoHS



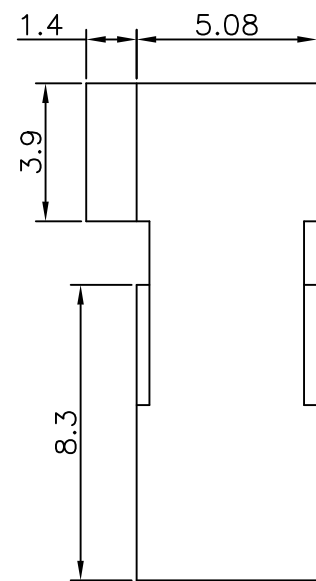
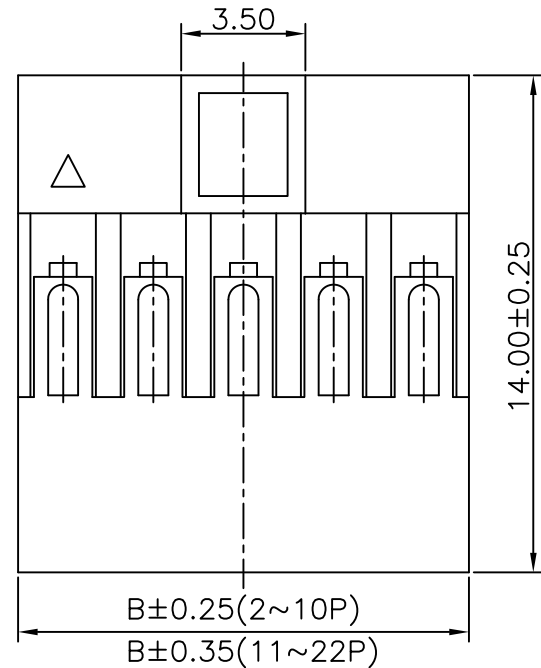
Dimensional Ordering Information:

Part No	Dimensions	
	A	B
2X2P	--	5.08
2X3P	5.08	7.62
2X4P	7.62	10.16
2X5P	10.16	12.70
2X6P	12.70	15.24
2X7P	15.24	17.78
2X8P	17.78	20.32
2X9P	20.32	22.86
2X10P	22.86	25.40
2X11P	25.40	27.94
2X12P	27.94	30.48
2X13P	30.48	33.02
2X14P	33.02	35.56
2X15P	35.56	38.10
2X16P	38.10	40.64
2X17P	40.64	43.18
2X18P	43.18	45.72
2X19P	45.72	48.26
2X20P	48.26	50.80
2X21P	50.80	53.34
2X22P	53.34	55.88

Specifications:
 Rated Voltage : 250V AC/DC
 Rated Current : 3A AC,DC
 Withstand Voltage : 800V AC/minute
 Contact Resistance : 20mΩ(MAX.)
 Insulation Resistance : 1000MΩ(MIN.)
 Temperature Range : -25°C~+85°C

12542H00-2xNPA-02
 ① ② ③ ④ ⑤

- ① Series No.
- ② H90 : Side Contact
H00 : Up Contact
- ③ No. of Circuits
- ④ A : Product color(A--Y)
Blank : Natural type
- ⑤ 02 : 02 type



2~10P Suitable for JCTC 12541 series terminal(common)
 11~22P Suitable for JCTC 12541 series terminal(loose)

Part No.	Material	Color
12542H00-2xNPA-02	PBT,UL 94V-0	黑色

REV.	REVISION RECORD	DATE	UNIT: MM	GENERAL TOLERANCES		SCALE:	NAME	DATE	胜蓝科技股份有限公司 TERMINAL&CONNECTORS 东莞市富智达电子科技有限公司	PART. NO:	
A0	新版发行	19.04.16		LINEAR	ANGLES	1:1				12542H00-2xNPA-02	
			0.0±0.25	X° REF±6°	APPROVED					DWG. NO:	
			0.00±0.15	X° ±3°	DESIGNER					ENDE05	
			SIZE: A4	0.000±0.08	X° X'±2°	DRAWN	伍文聪	19.04.16	TITLE:		
									DB双排低凸 2.54mm PITCH HOUSING		
									REV:	SHEET:	
									A0	1/1	