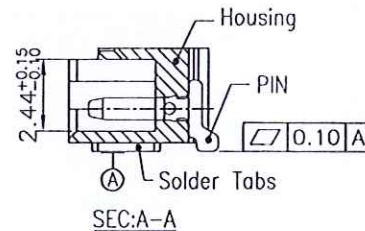
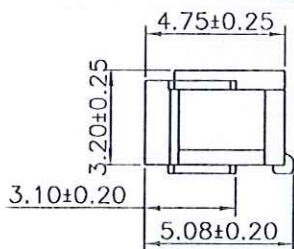
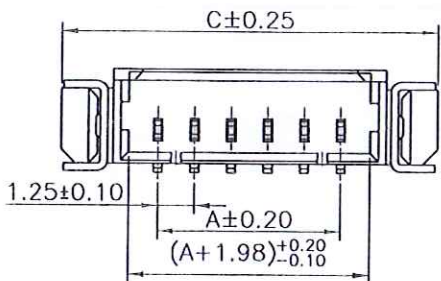


Circuits Part No	Dimensions		
	A	B	C
2P	1.25	4.35	7.85
3P	2.50	5.60	9.10
4P	3.75	6.85	10.35
5P	5.00	8.10	11.60
6P	6.25	9.35	12.85
7P	7.50	10.60	14.10
8P	8.75	11.85	15.35
9P	10.00	13.10	16.60
10P	11.25	14.35	17.85
11P	12.50	15.60	19.10
12P	13.75	16.85	20.35
13P	15.00	18.10	21.60
14P	16.25	19.35	22.85
15P	17.50	20.60	24.10
16P	18.75	21.85	25.35
17P	20.00	23.10	26.60
18P	21.25	24.35	27.85
19P	22.50	25.60	29.10
20P	23.75	26.85	30.35

GENERAL TOLERANCES: ±0.05

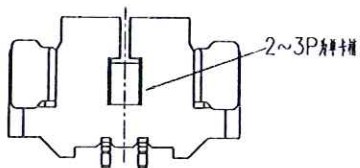
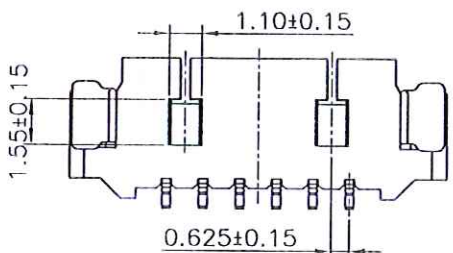


Specifications:

Rated Voltage : 125V AC/DC
 Rated Current : 1A AC,DC
 Withstand Voltage : 250V AC/minute
 Contact Resistance : 20mΩ(MAX.)
 Insulation Resistance : 100MΩ(MIN.)
 Temperature Range : -40°C~+85°C
 The product using material and processing must conform to the "WI-PZ-142"HSF technical standard control requirements

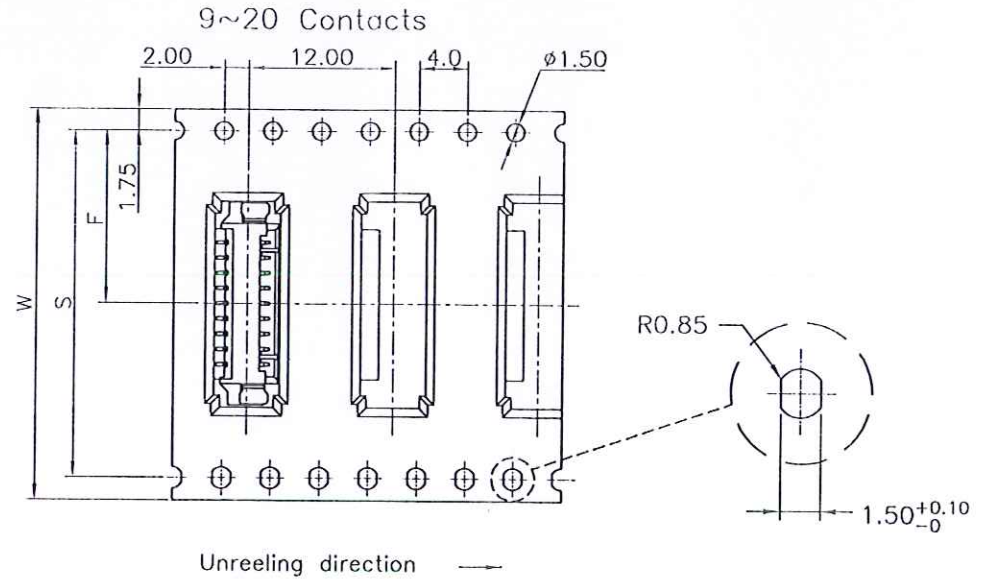
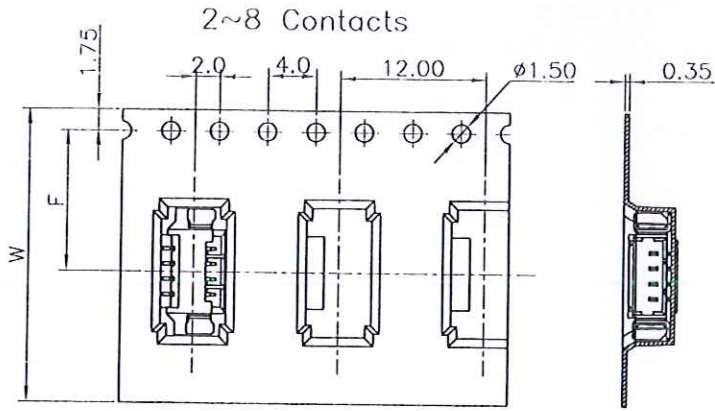
11251W90-NPX-SM-HF-R
 ① ② ③ ④ ⑤ ⑥ ⑦

- ① Series No.
- ② W90 : Side Contact
- ③ W00 : Up Contact
- ④ No. of Circuits
- ⑤ X : Product color(A--Y)
- Blank : Natural type
- ⑥ S : SMT type
- M : Matte-Tin G : Gold Flash
- 5E : PIN Gold 5u"Min
- ⑦ HF : Halogen Free
- ⑧ R : Tape & Reel



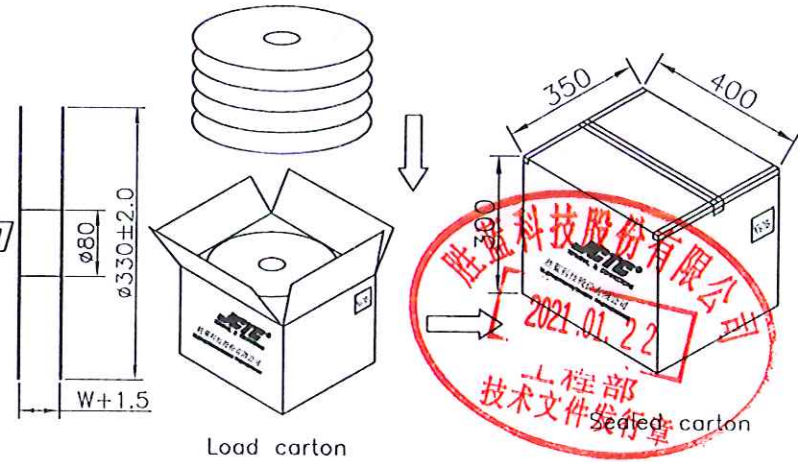
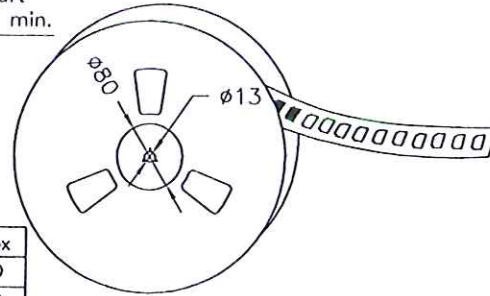
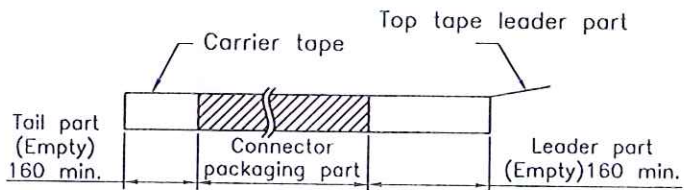
Part No.	Material	Color	Pin Material	Solder Tabs
11251W90-NP-SM-R	Nylon 6T,UL94V-0	本色	Phosphor Bronze/Matte Tin-plated	Brass/Matte Tin-plated
11251W90-NP-SG-R	Nylon 6T,UL94V-0	本色	Phosphor Bronze/Gold-plated	Brass/Tin-plated
11251W90-NP-SM-HF-R	LCP,UL94V-0	本色无卤	Phosphor Bronze/Matte Tin-plated	Brass/Matte Tin-plated
11251W90-NP-SG-HF-R	LCP,UL94V-0	本色无卤	Phosphor Bronze/Gold Flash	Brass/Matte Tin-plated

REV.	REVISION RECORD	DATE	GENERAL TOLERANCES	SCALE:	NAME	DATE	PART. NO:	DWG. NO:	 JCTC ® TERMINAL&CONNECTORS
C5	增加镀金规格	14. 03. 06	LINEAR	1:1			11251W90-NPX-SX-XX	ENDE05	
C6	增加"5E"规格	15. 03. 17	0.0±0.25	APPROVED					
D0	WN1612060193	16. 12. 06	0.00±0.15	DESIGNER		21.01.21	TITLE:		
D1	换图框发行	21. 01. 21	0.000±0.08	DRAWN	张振坤	21. 01. 21	MX 1.25mm PITCH SMT WAFER		



Unreeling direction →

Unreeling direction →



Load carton

Number of Contacts	W±0.3	F±0.1	S±0.1	Pcs/Reel	Pcs/Box
2P	16	7.50		1,300	19,500
3P~8P	24	11.50		1,300	13,000
9P~12P	32	14.20	28.40	1,300	10,400
13P~20P	44	20.20	40.40	1,300	7,800

REV.	REVISION RECORD		DATE	GENERAL TOLERANCES	SCALE: 1:1	NAME	DATE	PART. NO: 11251W90-NPX-SX-XX	DWG. NO: ENDE05	JCTC® TERMINAL&CONNECTORS
	REVISION	DESCRIPTION								
C1	整理	整理图面	13.01.30	LINEAR						
C2	整理	整理图面	15.03.17	0.0±0.25	X° REF±6°					
C3	WN1612060193		16.12.06	0.00±0.15	X° ±3°	DESIGNER	21.01.21	TITLE:		
C4	换图框	换图框发行	21.01.21	0.000±0.08	X° X'±2°	DRAWN	张振坤	MX 1.25mm PITCH SMT WAFER		

REV: C4 SHEET: 2/2