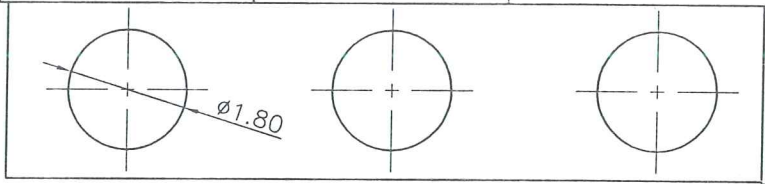
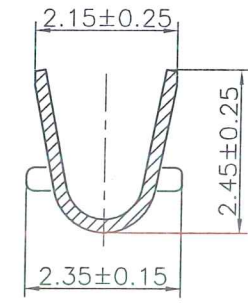
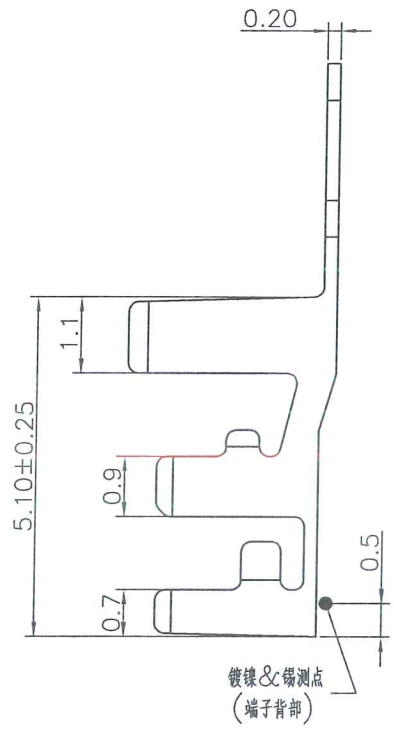
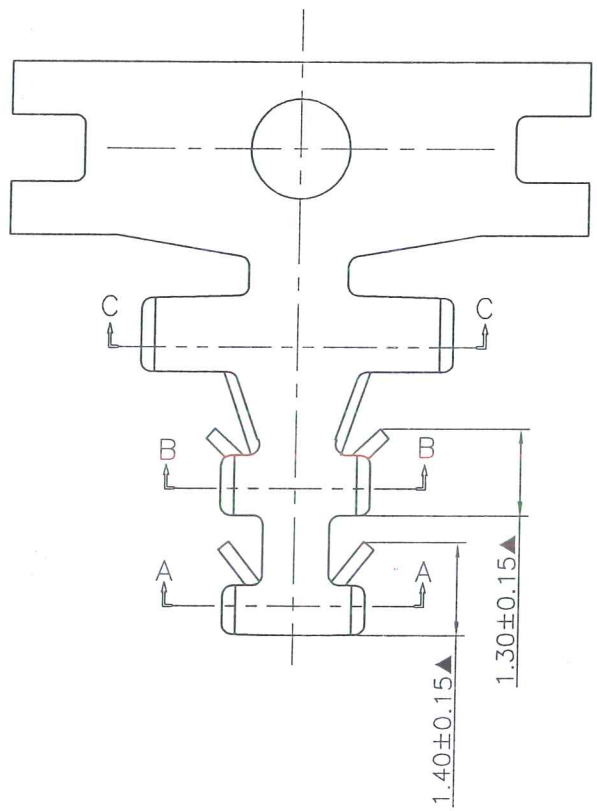


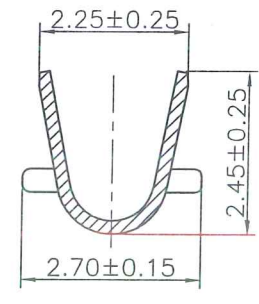
階位



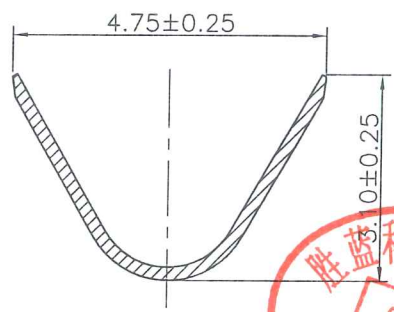
P.C.B LAYOUT  
T=1.20mm



Section A-A



Section B-B



Section C-C

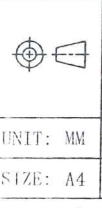
The product using material and processing must conform to the "WI-PZ-142"HSF technical standard control requirements



Part No	Wire Range	Insulation O.D.	Material	Finish	Qty/reel
21818T2P-2E-NK-S1	AWG #18~#22	2.1mm(max)	Phosphor bronze	Tin-plated	6000 pcs



REV.	REVISION RECORD	DATE
A0	新版图面发行	21.03.03
A1	TN2103120094	21.03.12



GENERAL TOLERANCES	
LINEAR	ANGLES
0.0±0.25	X° REF±6°
0.00±0.15	X° ±3°
0.000±0.08	X° X'±2°

SCALE: 1:1	NAME	DATE
APPROVED	罗祖国	21.03.12
DESIGNER	刘松	21.03.12
DRAWN	全宇星	21.03.12

PART NO:	DWG NO:
21818T2P-2E-NK-S1	ENDE05
TITLE: 插板高脚端子 (镀层加厚)	

**JCTC**®  
TERMINAL&CONNECTORS

REV: A1	SHEET: 1/1
---------	------------