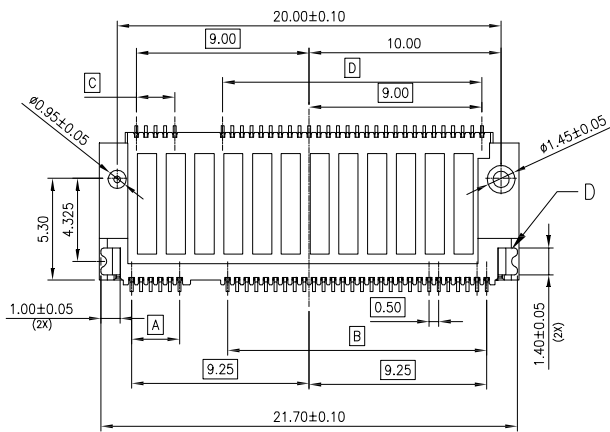
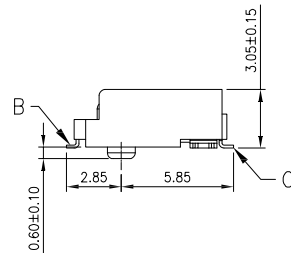
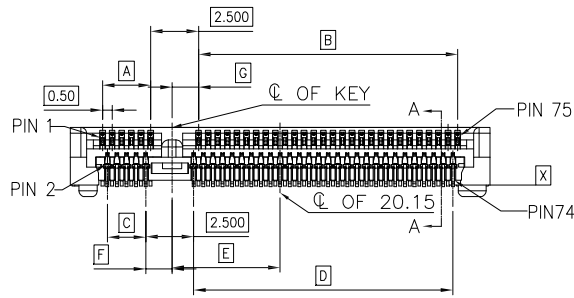
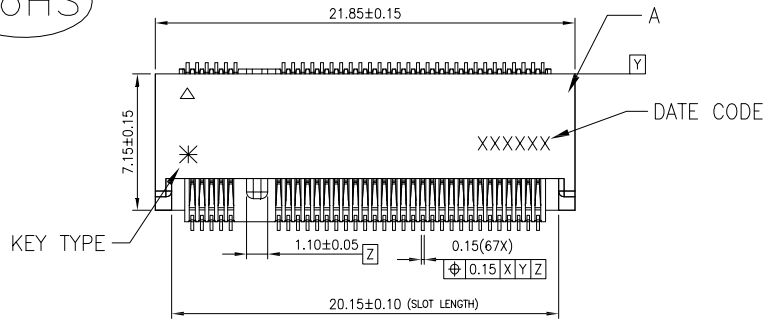


The product using material and processing must conform to the "WL-PZ-001" HSF technical standard control requirements

RoHS



D	METAL EAR	COPPER ALLOY	MATTE TIN	2	BRIGHT
C	UPPER CONTACT	COPPER ALLOY	SEE TABLE	34	
B	LOWER CONTACT	COPPER ALLOY	SEE TABLE	33	
A	HOUSING	HIGH TEMP THERMOPLASTIC, GLASS FIBER FILLED, UL94V-0*		1	BLACK
ITEM	DESCRIPTIONS	MATERIAL	FINISH	Q'TY	COLOR

- MATERIAL:
  - HOUSING: HIGH TEMPERATURE THERMOPLASTIC, GLASS FIBER FILLED UL94V-0, COLOR BLACK
  - TERMINAL: COPPER ALLOY
  - METAL EAR: BRASS
- PLATING:
  - TERMINAL: UNDERPLATED: NICKEL UNDERPLATING OVER ALL. GOLD PLATING ON CONTACT AREA, MATTE TIN PLATING ON SOLDER AREA.
  - METAL EAR: UNDERPLATED: NICKEL PLATING OVER ALL. MATTE TIN PLATING OVER ALL.
- HALOGEN FREE & RoHS COMPLIANT PRODUCTS.
- PLEASE PUT THE PRODUCT IN A CONDITION WHERE IS FULL OF
- NITROGEN WHEN PASS THE IR REFLOW
- DATE CODE: X X XX XX

ASSEMBLY LINE  
 DATE: 01~31  
 MONTH: 1~9, 0=Oct., A=Nov., B=Dec.  
 YEAR: 3=2013

7.P/N: WL PC F 9-67 2 X A X 015

TYPE:  
 A-KEY A B-KEY B  
 C-KEY C D-KEY D  
 E-KEY E F-KEY F  
 G-KEY G H-KEY H  
 J-KEY J K-KEY K  
 L-KEY L M-KEY M

PLATING:  
 1-G/F  
 3-5U"  
 5-15U"

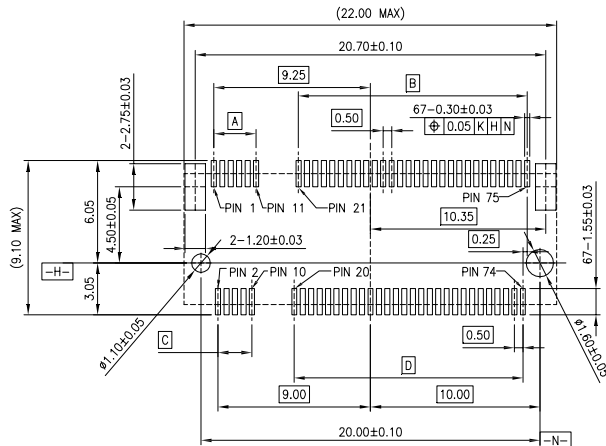
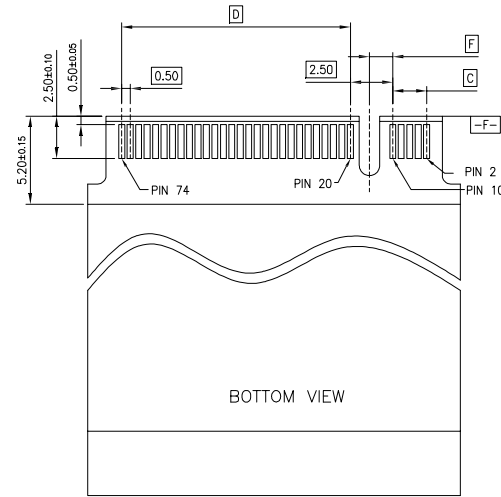
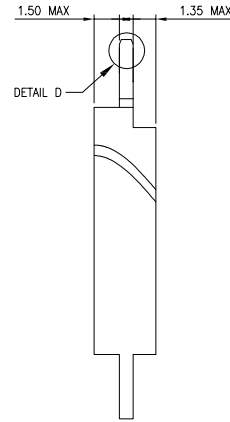
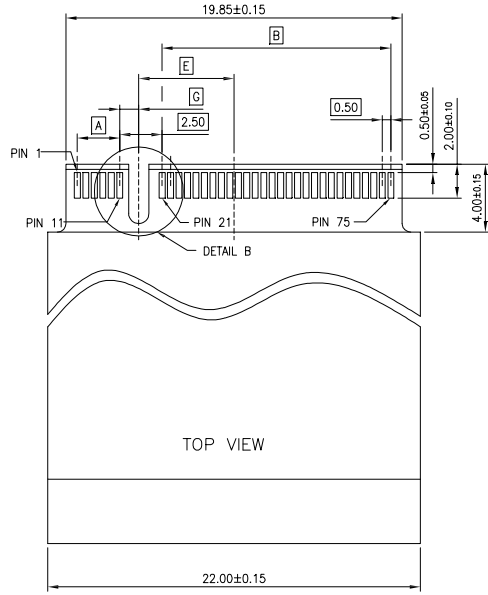
PN	KEY TYPE	DIM. A	DIM. B	DIM. C	DIM. D	DIM. E	DIM. F	DIM. G	AVAILABLE
WLPCF9-672XAM015	KEY M	14.0	2.0	14.0	1.5	-6.125	1.125	1.375	YES
WLPCF9-672XAL015	KEY L	13.0	3.0	13.0	2.5	-5.125	1.125	1.375	NO
WLPCF9-672XAK015	KEY K	12.0	4.0	12.0	3.5	-4.125	1.125	1.375	NO
WLPCF9-672XAJ015	KEY J	11.0	5.0	11.0	4.5	-3.125	1.125	1.375	NO
WLPCF9-672XAH015	KEY H	10.0	6.0	10.0	5.5	-2.125	1.125	1.375	NO
WLPCF9-672XAG015	KEY G	9.0	7.0	9.0	6.5	-1.125	1.125	1.375	NO
WLPCF9-672XAF015	KEY F	6.5	9.5	6.0	9.5	1.625	1.375	1.125	NO
WLPCF9-672XAE015	KEY E	5.5	10.5	5.0	10.5	2.625	1.375	1.125	NO
WLPCF9-672XAD015	KEY D	4.5	11.5	4.0	11.5	3.625	1.375	1.125	NO
WLPCF9-672XAC015	KEY C	3.5	12.5	3.0	12.5	4.625	1.375	1.125	NO
WLPCF9-672XAB015	KEY B	2.5	13.5	2.0	13.5	5.625	1.375	1.125	YES
WLPCF9-672XAA015	KEY A	1.5	14.5	1.0	14.5	6.625	1.375	1.125	NO

REV.	REVISION RECORD	DATE	GENERAL TOLERANCES	SCALE:	NAME	DATE	PART.NO:	DWG.NO:	WanLian Teconology Co., Ltd	
AO	NEW RELEASE	22.05.09	LINEAR 0.0±0.35	1:1	Wang_jr	22.05.09	WLPCF9-672XAX015	ENDE05	REV: A0	SHEET: 1/3
			ANGLES X°REF±6'	APPROVED						
			0.00±0.25	DESIGNER	Han_Gao	22.05.09	TITLE:			
			X°±3'	DRAWN	LanXuan_Hou	22.05.09	M.2 MINCARO MOUNTING,KEY A~F 0.50mm PITCH 67 PIN,3.20MM HEIGHT			
			UNIT:mm							
			SIZE: A4							
			0.000±0.10							
			X°X' ±2'							

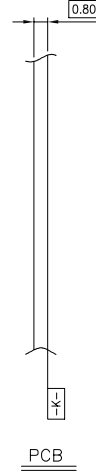


The product using material and processing must conform to the "WL-PZ-001" HSF technical standard control requirements

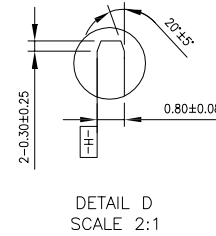
RoHS



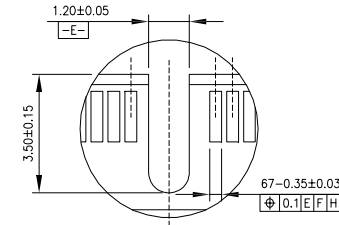
RECOMMENDED PCB LAYOUT(TOP VIEW)  
DEFAULT TOLERANCE ±0.05MM




PCB



DETAIL D  
SCALE 2:1

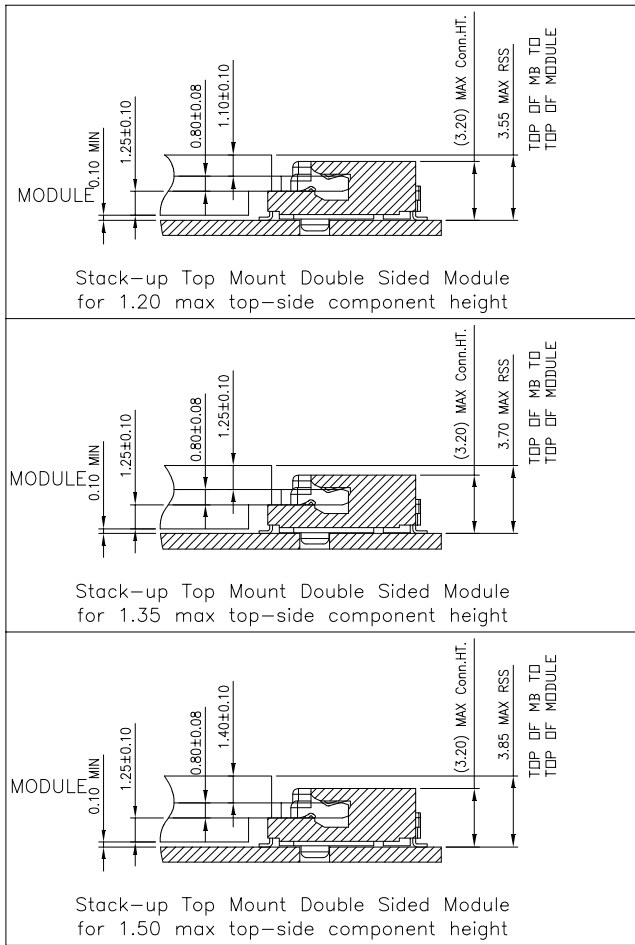


DETAIL B  
SCALE 2:1

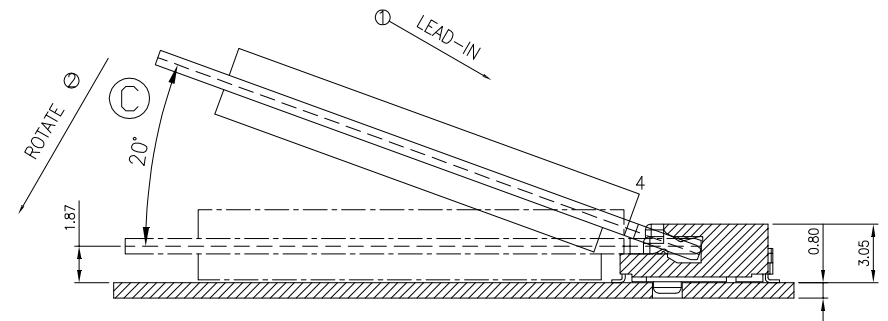
REV.	REVISION RECORD	DATE	GENERAL TOLERANCES		SCALE:	NAME	DATE	PART.NO:	DWG.NO:	 WanLian Teconology Co., Ltd
AO	NEW RELEASE	22.05.09	LINEAR	ANGLES	1:1	Wang_jr	22.05.09	WLPCF9-672XAX015	ENDE05	
			0.0±0.35	X'REF±6°	APPROVED	Han_Gao	22.05.09	TITLE: M.2 MINCARO MOUNTING,KEY A~F 0.50mm PITCH 67 PIN,3.20MM HEIGHT		REV: A0    SHEET: 2/3
			0.00±0.25	X'±3°	DESIGNER	LanXuan_Hou	22.05.09			
			0.000±0.10	X'X' ±2°	DRAWN					

The product using material and processing must conform to the "WL-PZ-001" HSF technical standard control requirements

RoHS



Assembly stack height schematic diagram



HOW TO MATE AND EXTRACT

REV.	REVISION RECORD	DATE		GENERAL TOLERANCES		SCALE: 1:1	NAME	DATE	PART.NO:	DWG.NO:	
AO	NEW RELEASE	22.05.09		LINEAR	ANGLES	APPROVED	Wang_jr	22.05.09	WLPCF9-672XAX015	ENDE05	
			UNIT:mm	0.00±0.25	X'±3°	DESIGNER	Han_Gao	22.05.09	TITLE:		REV: A0    SHEET: 3/3
			SIZE: A4	0.000±0.10	X'X' ±2°	DRAWN	LanXuan_Hou	22.05.09	M.2 MINICARO MOUNTING,KEY A~F 0.50mm PITCH 67 PIN,3.20MM HEIGHT		