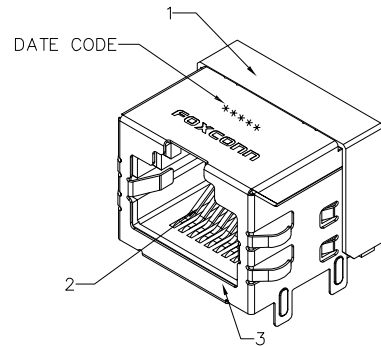
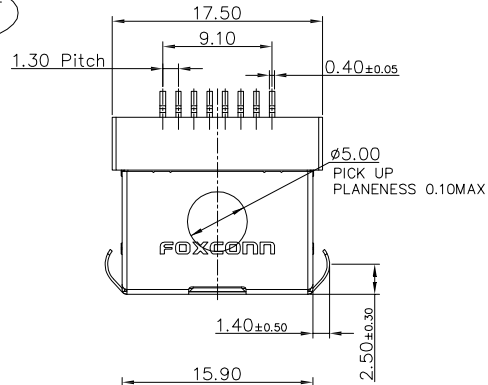
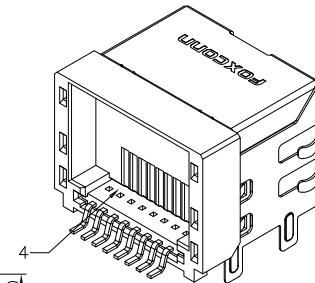
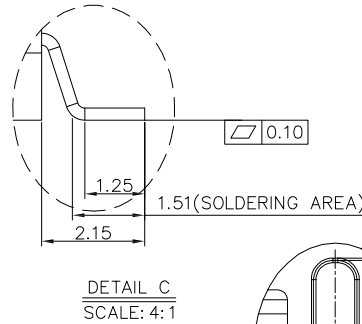
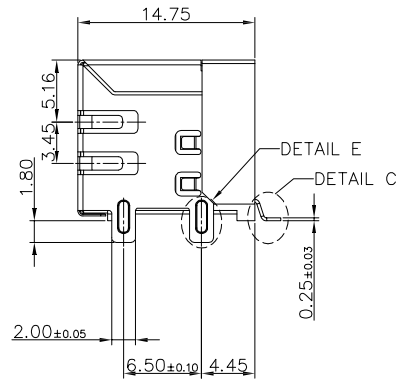
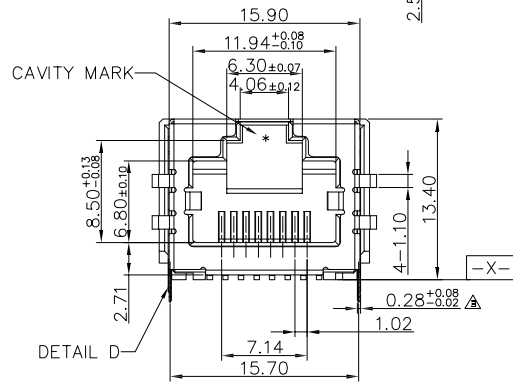


The product using material and processing must conform to the "WL-PZ-001" HSF technical standard control requirements

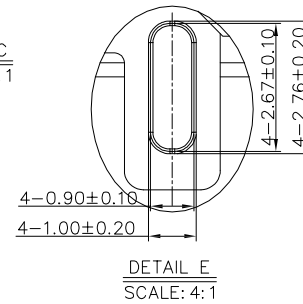
RoHS+HF



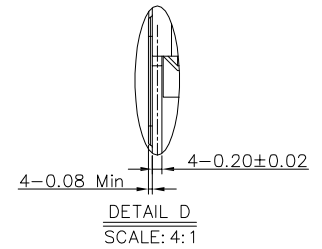
- NOTES:  
 1. RJ45 TO BE BASED UPON FCC68.5.  
 2. PCB STANDOFF SURFACE TO BE DATUM  $\boxed{-X-}$   
 3. HARMFUL MATERIAL CONTROL COMPLIANT RoHS.  
 4. LASER PRINT MARK: \*\*\*\*\* (DATE CODE).  
 5. CONTACT COPLANARITY: 0.10 MAX CONTAINS INITIAL UNDER REFLOW AND AFTER REFLOW.  
 6. CAVITY QUANTITY: 16; CAVITY MARK: A/B/C/D/E/F/G/H/I/K/M/N/O/R/U/X.



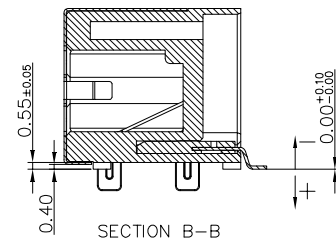
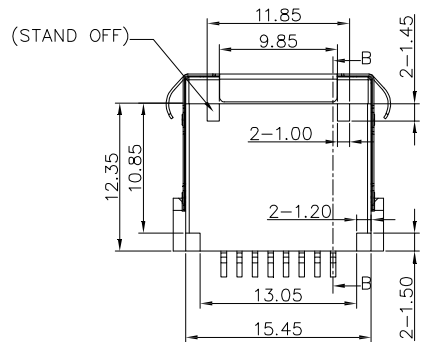
DETAIL C  
SCALE: 4:1


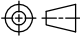


DETAIL E  
SCALE: 4:1



DETAIL D  
SCALE: 4:1

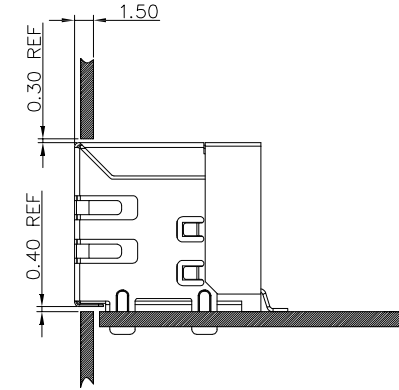
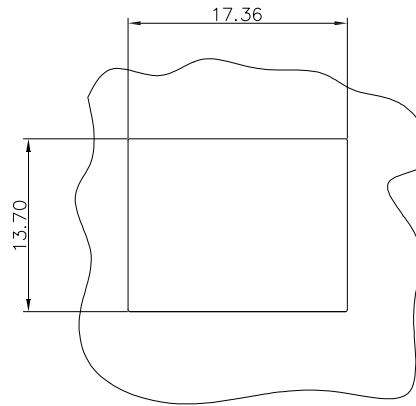
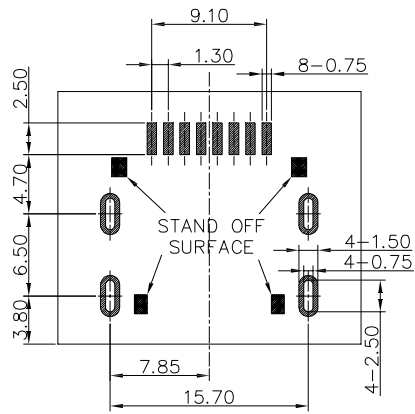


| REV. | REVISION RECORD | DATE     | GENERAL TOLERANCES  |            | SCALE:   | NAME     | DATE        | PART.NO:         | DWG.NO:                             | <br>WanLian Teconology Co., Ltd |
|------|-----------------|----------|---|------------|----------|----------|-------------|------------------|-------------------------------------|--|
| AO   | NEW RELEASE     | 22.05.09 |  | LINEAR     | 1:1      | Wang_jr  | 22.05.09    | WLR4F9-0821A0108 | ENDE05                              |  |
|      |                 |          |   | ANGLES     |          |          |             |                  |                                     |  |
|      |                 |          | UNIT:mm   | 0.00±0.25  | X'±3'    | DESIGNER | Han_Gao     | 22.05.09         | TITLE:                              |  |
|      |                 |          | SIZE: A4  | 0.000±0.10 | X'X' ±2' | DRAWN    | LanXuan_Hou | 22.05.09         | CONN, RJ45 RECEPTACLE SMT, H=13.4mm |  |

REV: A0 SHEET: 1/4

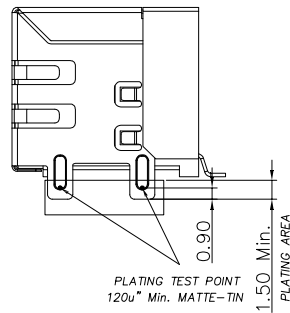
The product using material and processing must conform to the "WL-PZ-001"HSF technical standard control requirements

RoHS+HF



RECOMMENDED PANEL CUTOUT AND JACK LOCATION  
RECOMMENDED PCB THICKNESS: 1.20MM MAX.

RECOMMENDED PCB LAYOUT THICKNESS=1.20MM  
TOLERANCE: .XX±0.05



PLATING TEST POINT  
120u" Min. MATTE-TIN

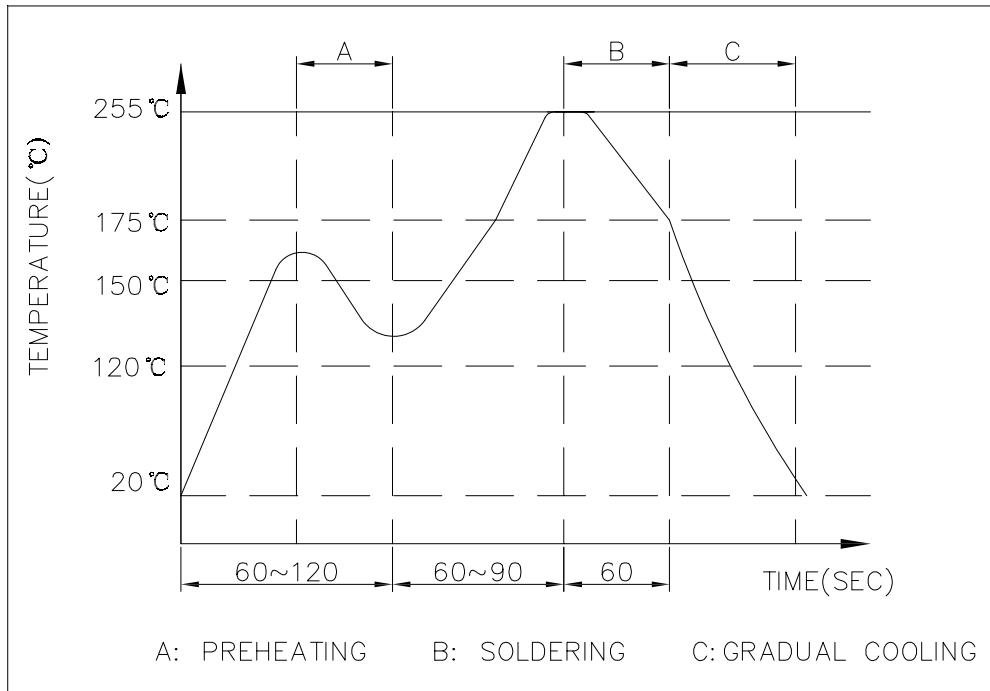
SHELL SUPPORT PIN PLATING MATTE-TIN AREA

| REV. | REVISION RECORD | DATE     |          | GENERAL TOLERANCES |          | SCALE:<br>1:1 | NAME     | DATE  | PART.NO:<br>WLR4F9-0821A0108 | DWG.NO:<br>ENDE05 |  |
|------|-----------------|----------|----------|--------------------|----------|---------------|----------|---|------------------------------|-------------------|--|
| A0   | NEW RELEASE     | 22.05.09 |          | LINEAR             | ANGLES   | APPROVED      | Wang_jr  | 22.05.09                                      |                              |                   |  |
|      |                 |          | 0.0±0.35 | X'REF±6°           | DESIGNER | Han_Gao       | 22.05.09 | TITLE:<br>CONN, RJ45 RECEPTACLE SMT, H=13.4mm | REV: A0                      | SHEET: 2/4        |  |
|      |                 |          | UNIT:mm  | X'±3°              | DRAWN    | LanXuan_Hou   | 22.05.09 |   |                              |                   |  |
|      |                 |          | SIZE: A4 | 0.000±0.10         | X'X' ±2° |               |          |   |                              |                   |  |

The product using material and processing must conform to the "WL-PZ-001"HSF technical standard control requirements

RoHS+HF

PROFILE OF IR REFLOW



SUGGESTED IR REFLOW CURVE  
 <1> TIP TEMPERATURE: 255°C MAX.  
 <2> TIP TEMPERATURE TIME : 5±1 SEC.

SPECIFICATIONS:

1.ELECTRICAL:

- 1-1 VOLTAGE RATING:125VAC RMS;
- 1-2 CURRENT RATING: 1.5 AMPERES MAXIMUM;
- 1-3 CONTACT RESISTANCE: 50 MILLOHMS MAX.;
- 1-4 INSULATION RATING: 500 MEGOHMS MIN.@500VDC;
- 1-5 DIELECTRIC WITHSTANDING VOLTAGE:1000VAC RMS 50Hz 1MIN.

2.MATERIAL&FINISH

- 2-1 HOUSING:LCP UL94V-0 BLACK;
- 2-2 CONTACT:PHOSPHOR BRONZE,T=0.25MM,GOLD 4u" MIN PLATED OVER NICKLE;
- 2-3 SHELL:STAINLESS STEEL,T=0.20MM,50u" MIN. SOLDERABLE NICKEL PLATING(NICKEL AMINOSULFONATE);
- 2-4 INSERTMOLDING:LCP UL94V-0 BLACK.

3.MECHANICAL:

- 3-1 MATING FORCE: 22.2N MAX. WITH LATCH DEPRESSED UNMATING FORCE: 44.5N MAX. WITH LATCH DEPRESSED AT AN ADVANTAGEOUS ANGLE PLUG RETENTION FORCE: 44.5N MIN.;
- 3-2 DURABILITY(MATING/UNMATING):1000 CYCLES.

4.ENVIRONMENTAL

- 4-1 OPERATING : -40°C TO +85°C;
- 4-2 STORAGE : -40°C TO +85°C;
- 4-3 HARMFUL MATERIAL CONTROL FOLLOW RoHS.

|      |                 |          |          |                    |          |            |             |          |                                     |         |                       |
|------|-----------------|----------|----------|--------------------|----------|------------|-------------|----------|-------------------------------------|---------|-----------------------|
| REV. | REVISION RECORD | DATE     |          | GENERAL TOLERANCES |          | SCALE: 1:1 | NAME        | DATE     | PART.NO:                            | DWG.NO: |                       |
| AO   | NEW RELEASE     | 22.05.09 |          | LINEAR             | ANGLES   | APPROVED   | Wang_jr     | 22.05.09 | WLR4F9-0821A0108                    | ENDE05  |                       |
|      |                 |          | UNIT:mm  | 0.00±0.25          | X'±3'    | DESIGNER   | Han_Gao     | 22.05.09 | TITLE:                              |         | REV: A0    SHEET: 3/4 |
|      |                 |          | SIZE: A4 | 0.000±0.10         | X'X' ±2' | DRAWN      | LanXuan_Hou | 22.05.09 | CONN, RJ45 RECEPTACLE SMT, H=13.4mm |         |                       |

The product using material and processing must conform to the "WL-PZ-001"HSF technical standard control requirements

RoHS+HF

|      |               |   |      |
|------|---------------|---|------|
| ④    | INSERTMOLDING | LCP,UL94V-0,BLACK   | 1    |
| ③    | SHELL         | STAINLESS,T=0.20,50u"MIN. NI UNDERPLATING,80u" MIN.<br>LEAD FREE TIN SELECTIVE PLATING AT SOLDER TAIL AREA                        | 1    |
| ②    | TERMINAL      | PHOSPHOR BRONZE,T=0.25,30u" MIN. NI PLATING OVER ALL,<br>4u"MIN. Au PLATING ON CONTACT AREA,100u" MIN. MATT TIN<br>ON SOLDED AREA | 1    |
| ①    | HOUSING       | LCP,UL94V-0,BLACK   | 1    |
| ITEM | DESCRIPTION   | REMARK  | Q'TY |

5.P/N:

WL R4 F 9-08 2 1 A 0 108

CONNECTOR:  
R4-RJ45

MALE FEMALE:  
F-FEMALE

ANGLE:  
9-90°

PIN Q'PY:  
08PIN

COLOR:  
A-BLACK

PLATING:  
1-G/F  
3-5U"  
5-15U"  
6-30U"

TERMIPOINT:  
2-SMT

|      |                 |          |          |                    |          |               |             |          |                                     |         |                    |
|------|-----------------|----------|----------|--------------------|----------|---------------|-------------|----------|-------------------------------------|---------|--------------------|
| REV. | REVISION RECORD | DATE     |          | GENERAL TOLERANCES |          | SCALE:<br>1:1 | NAME        | DATE     | PART.NO:                            | DWG.NO: |                    |
| AO   | NEW RELEASE     | 22.05.09 |          | LINEAR             | ANGLES   | APPROVED      | Wang_jr     | 22.05.09 | WLR4F9-0821A0108                    | ENDE05  |                    |
|      |                 |          | UNIT:mm  | 0.00±0.25          | X'±3°    | DESIGNER      | Han_Gao     | 22.05.09 | TITLE:                              |         | REV: A0 SHEET: 4/4 |
|      |                 |          | SIZE: A4 | 0.000±0.10         | X'X' ±2° | DRAWN         | LanXuan_Hou | 22.05.09 | CONN, RJ45 RECEPTACLE SMT, H=13.4mm |         |                    |