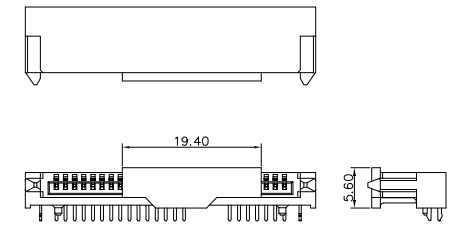
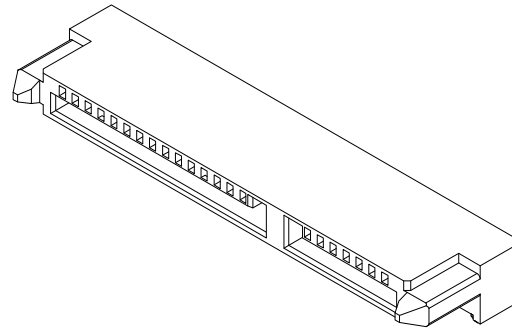
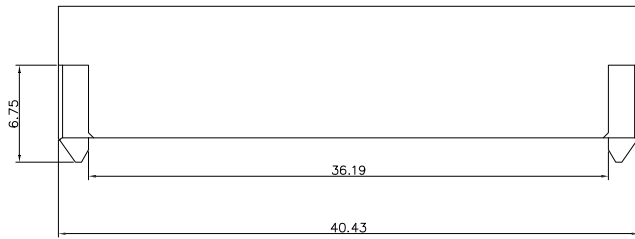
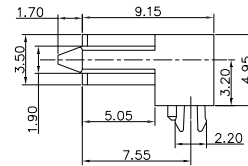
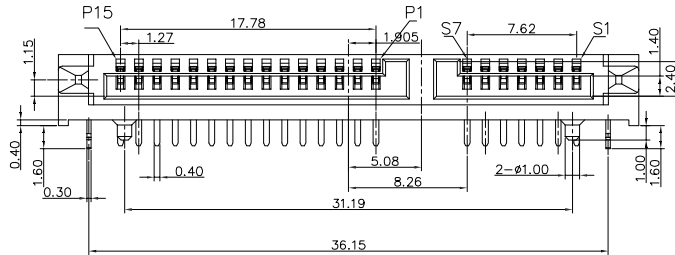


The product using material and processing must conform to the "WL-PZ-001" HSF technical standard control requirements

RoHS

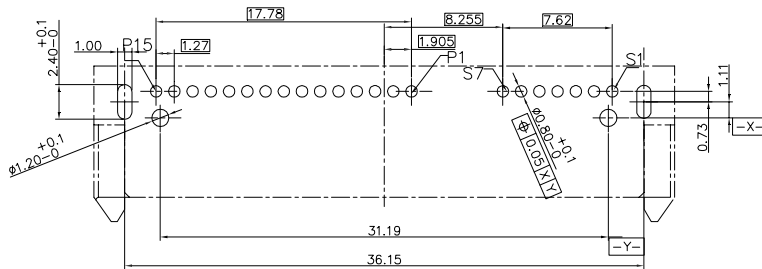


ASSEMBLY WITH CAP



NOTES:

1. MATERIAL:
 - 1.1 HOUSING: HIGH TEMPERATURE THERMOPLASTIC, GLASS FIBER FILLE UL94V-0, COLOR BLACK
 - 1.2 CAP: HIGH TEMPERATURE THERMOPLASTIC, GLASS FIBER FILLED UL94V-0, COLOR BLACK
 - 1.3 TERMINAL: COPPER ALLOY
 - 1.4 NUT: BRASS
2. PLATING:
 - 2.1 TERMINAL: UNDERPLATED: NICKEL UNDERPLATING OVER ALL. GOLD FLASH ON CONTACT AREA, MATTE TIN 100u" ON SOLDER AR
 - 2.2 NUT: UNDERPLATED: NICKEL PLATING OVER ALL.
3. HALOGEN FREE & RoHS COMPLIANT PRODUCTS.
4. DATE CODE:



RECOMMEND PCB LAYOUT
PCB H=1.00MM TOLERANCE: ±0.05

P/N: WL SA F 9-15 1 1 A 0 006


CONNECTOR: SA-SATA COLOR: A-BLACK

MALE FEMALE: F-FEMALE PLATING: 1-G/F, 3-5U", 5-15U", 6-30U"

ANGLE: 9-90°

PIN Q'PY: 15PIN TERMIPOINT: 1-DIP

Name	Type
GND	S1
A+	S2
A-	S3
GND	S4
B-	S5
B+	S6
GND	S7
V33	P1
V33	P2
V33	P3
GND	P4
GND	P5
GND	P6
V5	P7
V5	P8
V5	P9
GND	P10
DAS _{DSS}	P11
GND	P12
V12	P13
V12	P14
V12	P15

REV.	REVISION RECORD	DATE	GENERAL TOLERANCES		SCALE:	NAME	DATE	PART.NO:	DWG.NO:	 WanLian Teconology Co., Ltd	
A0	NEW RELEASE	22.05.09	LINEAR	ANGLES	1:1	Wang_jr	22.05.09	WLSAF9-1511A0006	ENDE05		
			0.0±0.35	X'REF±6°	APPROVED	Han_Gao	22.05.09	TITLE: CONN,SATA HDD RECEPTACLE REVERSR R/A DIP HOOK,C/H H=3.20mm	REV: A0		SHEET: 1/1
			0.00±0.25	X'±3°	DESIGNER	LanXuan_Hou	22.05.09				
			UNIT:mm	X'X' ±2°	DRAWN						