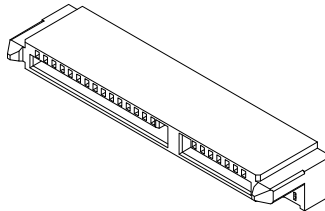


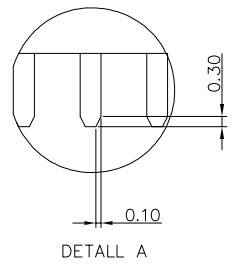
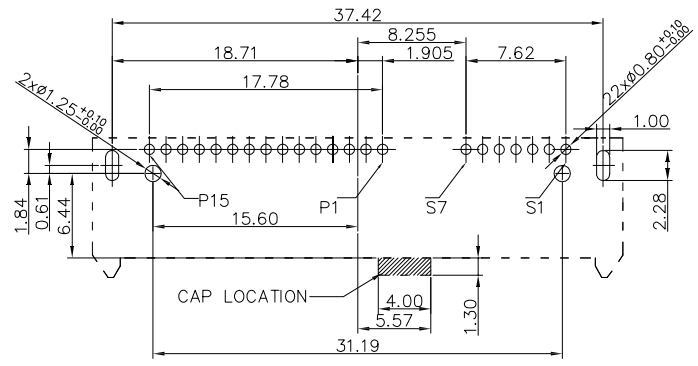
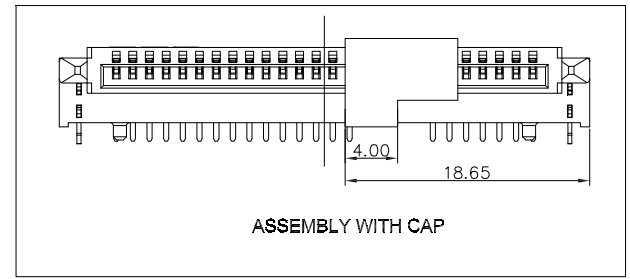
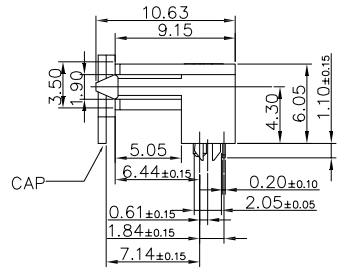
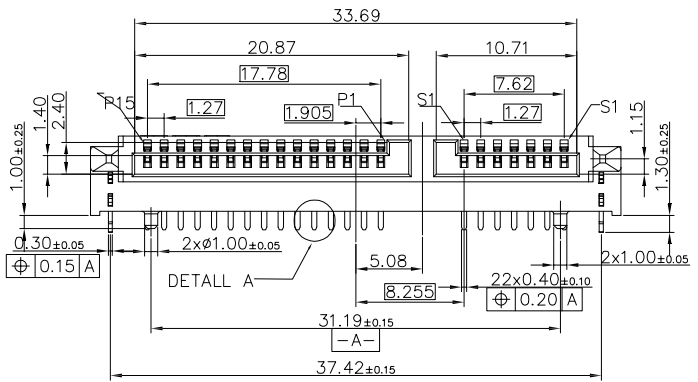
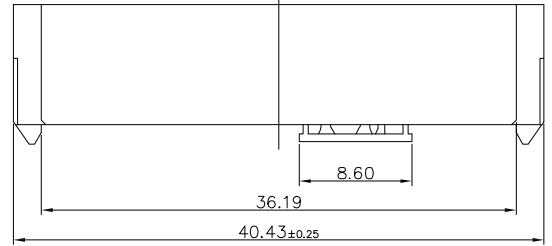
The product using material and processing must conform to the "WL-PZ-001" HSF technical standard control requirements

RoHS



NOTES:

1. MATERIAL:
  - 1.1 HOUSING: HIGH TEMPERATURE THERMOPLASTIC, GLASS FIBER FILLED UL94V-0, COLOR BLACK
  - 1.2 TERMINAL: COPPER ALLOY
  - 1.3 HOOK: COPPER ALLOY
2. PLATING:
  - 2.1 TERMINAL: UNDERPLATED: NICKEL UNDERPLATING OVER ALL. GOLD PLATING ON CONTACT AREA, MATTE TIN 100μ" ON SOLDER AREA UNDERPLATED: NICKEL PLATING OVER ALL.
  - 2.2 HOOK: Tin 100u" PLATING OVER ALL.
3. DATE CODE: \* \* \* \*



RECOMMEND PCB LAYOUT THICKNESS=1.20MM TOLERANCE: ±0.05

P/N: WL SA F 9-15 1 1 A 0 008

- CONNECTOR: SA-SATA
- MALE FEMALE: F-FEMALE
- ANGLE: 9-90°
- PIN Q'PY: 15PIN
- COLOR: A-BLACK
- PLATING: 1-G/F, 3-5U", 4-10U", 5-15U"
- TERMIPOINT: 1-DIP

REV.	REVISION RECORD	DATE	GENERAL TOLERANCES		SCALE: 1:1	NAME	DATE	PART.NO:	DWG.NO:	
AO	NEW RELEASE	22.05.09	LINEAR	ANGLES	APPROVED	Wang_jr	22.05.09	WLSAF9-1511A0008	ENDE05	
			0.0±0.35	X'REF±6°	DESIGNER	Han_Gao	22.05.09	TITLE:		WanLian Teconology Co., Ltd REV: A0 SHEET: 1/1
			0.00±0.25	X'±3°	DRAWN	LanXuan_Hou	22.05.09	CONN,SATA HDD RECEPTACLE REVERSR R/A DIP WITH NUT,C/H=4.30mm		