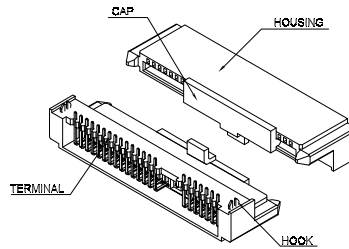
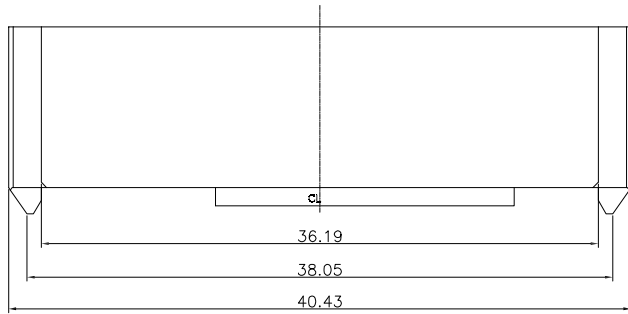


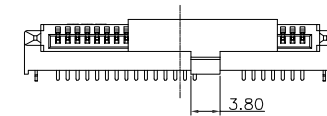
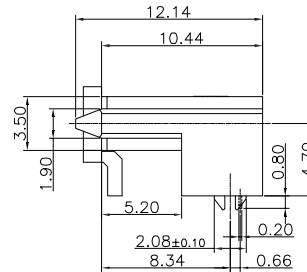
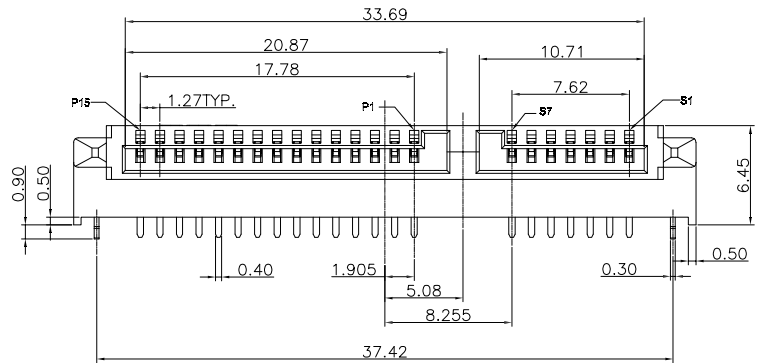
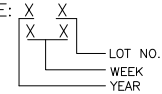
The product using material and processing must conform to the "WL-PZ-001"HSF technical standard control requirements

RoHS

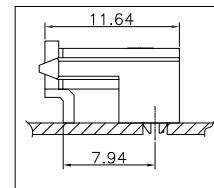
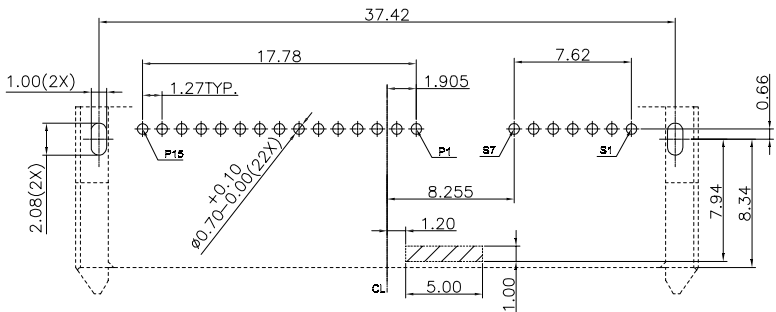


NOTES:

1. MATERIAL:
 - 1.1 HOUSING: HIGH TEMPERATURE THERMOPLASTIC, GLASS FIBER FILLED UL94V-0, COLOR BLACK
 - 1.2 HOOK: COPPER ALLOY
 - 1.3 TERMINAL: COPPER ALLOY
2. PLATING:
 - 2.1 TERMINAL: UNDERPLATED: NICKEL UNDER PLATING OVER ALL. GOLD PLATING ON CONTACT AREA, MATTE TIN 100μ" ON SOLDER AREA.
 - 2.2 HOOK UNDERPLATE: NICKEL PLATING OVER ALL. MATTE TIN 100μ" OVER NICKEL.
3. RoHS AND HALOGEN FREE COMPLIANT PRODUCTS.
4. DATE CODE: X X X X



ASSEMBLE WITH CAP



P/N: WL SA F 9-15 1 1 A 0 012

CONNECTOR: SA-SATA COLOR: A-BLACK
 MALE FEMALE: F-FEMALE PLATING: 1-G/F, 3-5U", 4-10U", 5-15U"
 ANGLE: 9-90° TERMIPOINT: 1-DIP
 PIN Q' PY: 15PIN

RECOMMEND P.C.B LAYOUT
 THICKNESS=1.00mm TOLERANCE =±0.05mm

REV.	REVISION RECORD	DATE		GENERAL TOLERANCES		SCALE: 1:1	NAME	DATE	PART.NO:	DWG.NO:	
AO	NEW RELEASE	22.05.09		LINEAR	ANGLES	APPROVED	Wang_jr	22.05.09	WLSAF9-1511A0012	ENDE05	
			UNIT:mm	0.00±0.25	X'±3'	DESIGNER	Han_Gao	22.05.09	TITLE:		WanLian Teconology Co., Ltd REV: A0 SHEET: 1/1
			SIZE: A4	0.000±0.10	X'X' ±2'	DRAWN	LanXuan_Hou	22.05.09	CONN,SATA HDD RECEPTACLE R/A DIP WITH HOOK ,C/H=4.70mm		