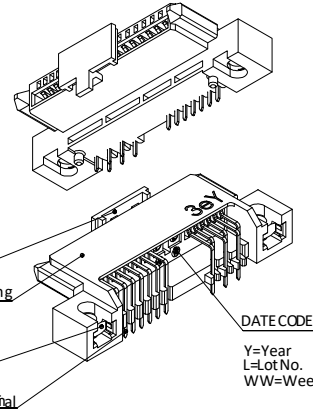
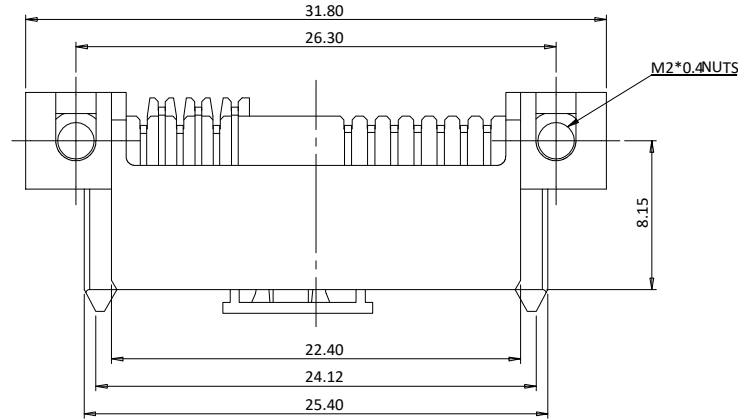


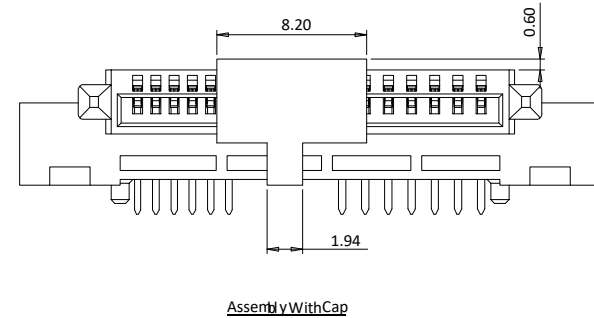
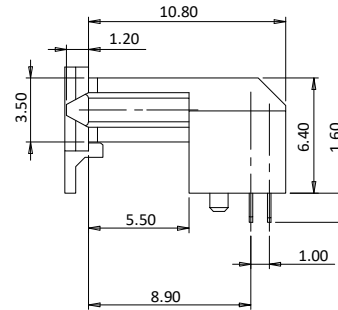
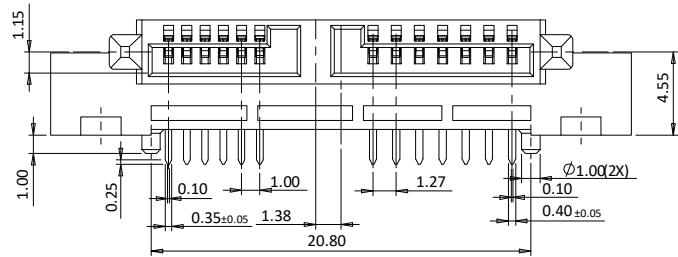
The product using material and processing must conform to the "WL-PZ-001"HSF technical standard control requirements

RoHS

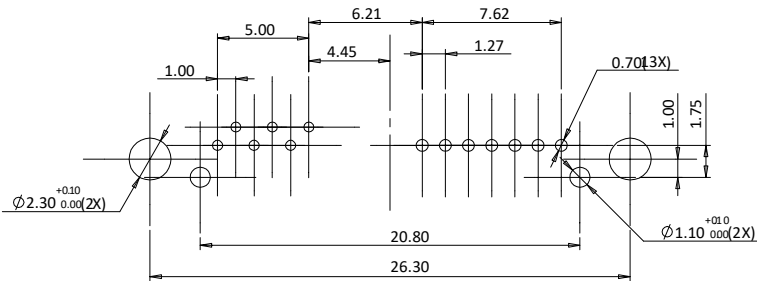


NOTES:

1. MATERIAL:
 - 1.1 HOUSING: HIGH TEMPERATURE THERMOPLASTIC, GLASS FIBER FILLED UL94V0, COLOR BLACK
 - 1.2 CAP: HIGH TEMPERATURE THERMOPLASTIC, GLASS FIBER FILLED UL94V0, COLOR BLACK
 - 1.3 TERMINAL: COPPER ALLOY
 - 1.4 NUT: COPPER ALLOY
2. PLATING:
 - 2.1 TERMINAL: UNDERPLATED: NICKEL UNDER PLATING OVER ALL. GOLD FLASH ON CONTACT AREA, TIN100μ ON SOLDER AREA.
 - 2.2 NUT UNDERPLATE: NICKEL PLATING OVER ALL.
3. RoHS AND HALOGEN FREE COMPLIANT PRODUCTS.
4. DATE CODE: ****
 - LOTNO.
 - WEEK
 - YEAR



Assembly With Cap



RECOMMENDED PCB LAYOUT (COMPONENT SIDE)
TOLERANCE: ±0.05mm, PCB THICKNESS: 1.20mm

P/N: WL SA F 9-15 1 1 A 0 017

CONNECTOR: SA-SATA COLOR: A-BLACK

MALE FEMALE: F-FEMALE PLATING: 1-G/F, 3-5U, 4-10U, 5-15U

ANGLE: 9-90°

PIN Q'PY: 15PIN TERMIPOINT: 1-DIP

REV.	REVISION RECORD	DATE		GENERAL TOLERANCES		SCALE: 1:1	NAME	DATE	PART.NO:	DWG.NO:	 WanLian Teconology Co., Ltd
AO	NEW RELEASE	22.05.09		LINEAR	ANGLES	APPROVED	Wang_jr	22.05.09	WLSAF9-1511A0017	ENDE05	
			UNIT:mm	0.0±0.35	X'REF±6°	DESIGNER	Han_Gao	22.05.09	TITLE:		REV: A0 SHEET: 1/1
			SIZE: A4	0.00±0.25	X'±3°	DRAWN	LanXuan_Hou	22.05.09	SLIMLINE SATA RECEPTACLE REVERSE R/A DIP WITH SCREW,C/H=4.55mm		