

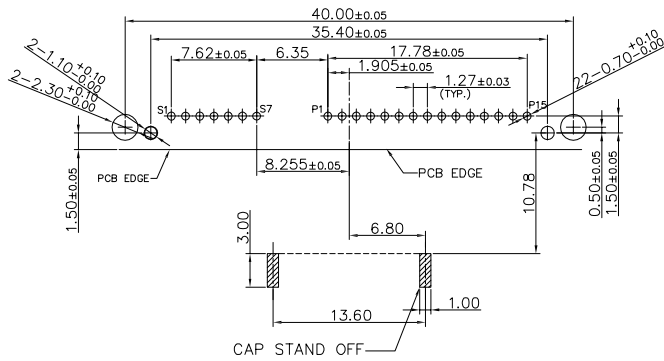
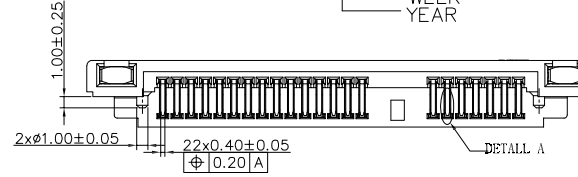
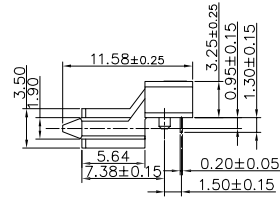
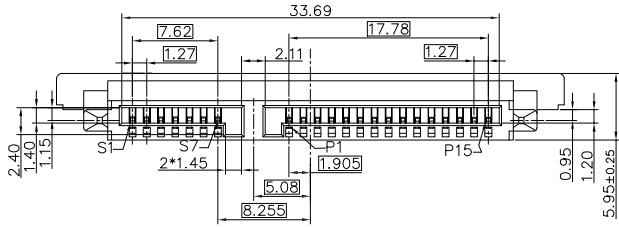
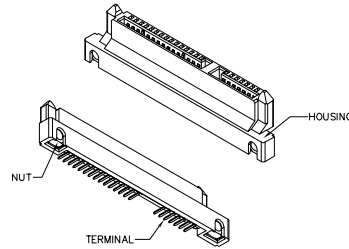
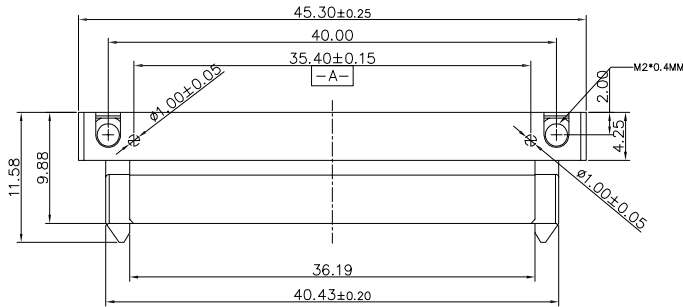
The product using material and processing must conform to the "WL-PZ-001" HSF technical standard control requirements

RoHS+HF

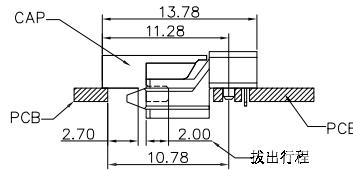
NOTES:

1. MATERIAL:
  - 1.1 HOUSING: HIGH TEMPERATURE THERMOPLASTIC, GLASS FIBER FILLED UL94V-0, COLOR BLACK
  - 1.2 CAP: HIGH TEMPERATURE THERMOPLASTIC, GLASS FIBER FILLED UL94V-0, COLOR BLACK
  - 1.3 TERMINAL: COPPER ALLOY
  - 1.4 NUT: BRASS
2. PLATING:
  - 2.1 TERMINAL: UNDERPLATED: NICKEL UNDERPLATING OVER ALL. GOLD FLASH ON CONTACT AREA, MATTE TIN 100u" ON SOLDER AREA.
  - 2.2 NUT: UNDERPLATED: NICKEL PLATING OVER ALL.
3. DATE CODE:
 

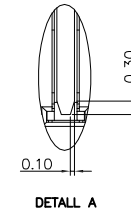
*	*	*	*
---	---	---	---
---	---	---	---
---	---	---	---



RECOMMEND PCB LAYOUT  
PCB THICKNESS: 1.20MM TOLERANCE: ±0.05



ASSEMBLY WITH CAP



P/N: WL SA F 9-15 2 1 A 0 018

CONNECTOR: SA-SATA

MALE FEMALE: F-FEMALE

ANGLE: 9-90°

PIN Q'PY: 15PIN

COLOR: A-BLACK

PLATING: 1-G/F, 3-5U", 5-15U", 6-30U"

TERMPPOINT: 1-DIP

REV.	REVISION RECORD	DATE		GENERAL TOLERANCES		SCALE: 1:1	NAME	DATE	PART.NO:	DWG.NO:		
AO	NEW RELEASE	22.05.09		LINEAR	ANGLES	APPROVED	Wang_jr	22.05.09	WLSAF9-1521A0018	ENDE05		
			UNIT:mm	0.00±0.25	X'±3°	DESIGNER	Han_Gao	22.05.09	TITLE:		REV: A0	SHEET: 1/1
			SIZE: A4	0.000±0.10	X'X' ±2°	DRAWN	LanXuan_Hou	22.05.09	CONN,SATA SUNKEN HDD STD. REVERSE R/A SMT WITH NUTS,C/H=-0.95MM			