

The product using material and processing must conform to the "WI-PZ-142"HSF technical standard control requirements

NOTE:

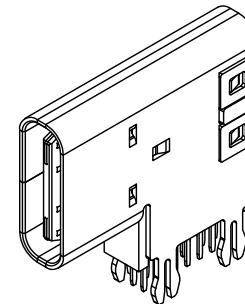
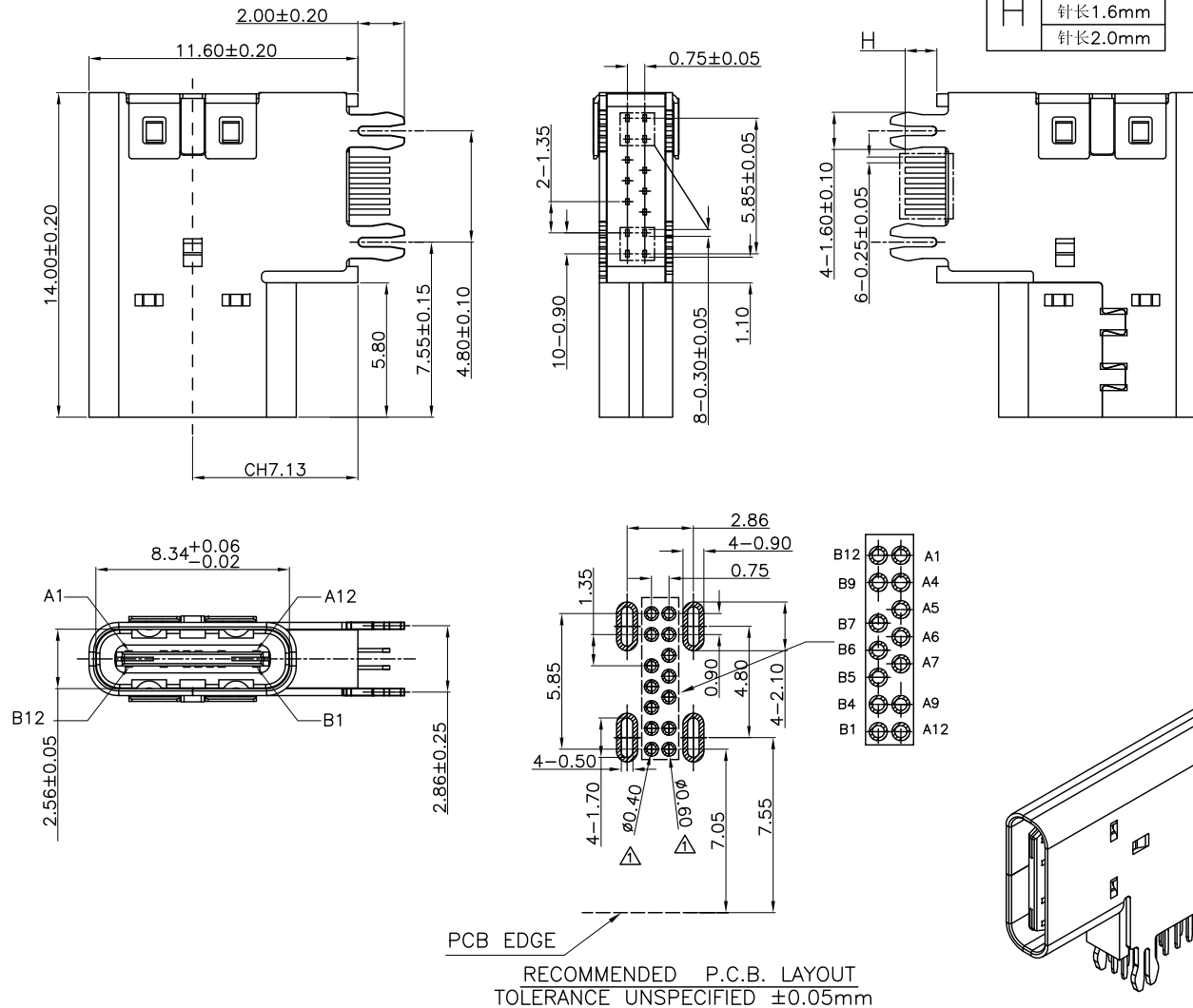
- 1.MATERIAL SPECIFICATION:
 1-1.HOUSING:LCP BLACK UL94V-0
 1-2.CONTACTS:COPPER ALLOY
 1-3.MID PLATE:STAINLESS STEEL
 1-4.SHELL: STAINLESS STEEL
 1-5.CAP: STAINLESS STEEL
- 2.PLATING SPECIFICATION:
 2-1.CONTACTS:
 GOLD FLASH PLATED ON CONTACT AREA,
 TIN PLATED ON SOLDER TAILS AREA,
 NICKEL UNDER PLATING OVER ALL.
 2-2.MID PLATE: CLEAR ONLY
 2-3.FRONT SHELL:NICKEL UNDER PLATING OVER ALL.
- 3.MECHANICAL PERFORMANCE:
 3-1.INSERTION FORCE: 2.0kgf MAX
 3-2.REMOVAL FORCE: 0.8kgf MIN
 3-3.DURABILITY: 10000 CYCLES.
- 4.ELECTRICAL PERFORMANCE:
 4-1. CURRENT RATING:3.0A
 VOLTAGE RATING:20V MAX
 4-2. CONTACT RESISTANCE: 40m Ohm Max.
 4-3.INSULATION RESISTANCE: 100MΩ MIN
 4-4.WITHSTANDING VOLTAGE: 100V AC r.m.s.
- 5.ENVIRONMENTAL PERFORMANCE:
 OPERATING TEMPERATURE: -25°C~+85°C.
- 6.P/N:


WLT2F9-14 1 X X X 201

Plated: _____
 1.G/F
 2.Au 3u"
 5.Au 15u"
 6.Au 30u"
 Pin: Δ
 0-1.3mm
 1-1.6mm
 2-2.0mm
 Colour:
 A-Black

A1	A2	A3	A4	A5	A6	A7	A8	A9	A10	A11	A12
GND			VBUS	CC1	D+	D-		VBUS			GND
GND			VBUS		D-	D+	CC2	VBUS			GND
B12	B11	B10	B9	B8	B7	B6	B5	B4	B3	B2	B1

H	针长1.3mm
	针长1.6mm
	针长2.0mm



REV.	REVISION RECORD	DATE	GENERAL TOLERANCES		SCALE:	NAME	DATE	PART.NO:	DWG.NO:	 WanLian Technology Co., Ltd REV: A1 SHEET: 1/1
A0	NEW RELEASE	21.01.13	LINEAR	ANGLES	1:1	Wang_jr	23.06.30	WLT2F9-141XXX201	ENDE05	
A1	ADD Size Δ	23.06.30	0.00±0.25	X°REF±6°	APPROVED	Ou_jian	23.06.30	TITLE:		
			0.00±0.10	X°X'±2°	DESIGNER	Hou_lanxuan	23.06.30	Type C 14P/F DIP CH=7.13mm		