

The product using material and processing must conform to the "WI-PZ-001"HSF technical standard control requirements

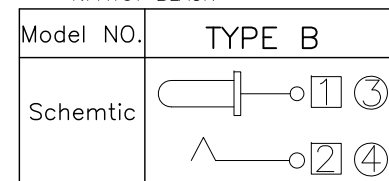
RoHS

NOTE:

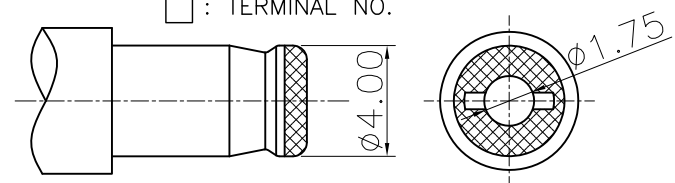
- 1.MATERIAL SPECIFICATION:
 1-1.HOUSING:THERMOPLASTIC
 1-2.CENTER PIN: COPPER ALLOY
 1-4.CENTER PIN TERMINAL: COPPER ALLOY T=0.40mm
 1-5.TIP SPRING: COPPER ALLOY T=0.25mm
 1-6.HOOK: COPPER ALLOY T=0.50mm
 2.PLATING SPECIFICATION:
 2-1.CENTER PIN:
 SN PLATING ON CONTACT AREA.
 2-2.CENTER PIN TERMINAL:
 SN PLATING ON CONTACT AREA.
 2-3.TIP SPRING: SN PLATING.
 2-4.HOOK: SN PLATING.
 3.MECHANICAL PERFORMANCE:
 3-1.INSERTION AND EXTRACTION FORCE: 3N~30N
 3-3.DURABILITY: 5000 CYCLES.
 4.ELECTRICAL PERFORMANCE:
 4-1.RATED CURRENT: 3A
 4-2.NOMINAL VOLTAGE: 18V
 4-3.CONTACT RESISTANCE: 30mΩ MAX
 AFTER TEST: 50mΩ MAX
 4-4.INSULATION RESISTANCE: 100MΩ MIN
 AFTER TEST: 50MΩ MIN
 4-5.WITHSTANDING VOLTAGE: 500V AC
 5.OPERATION TEMPERATURE RANGE: -20°C~70°C
 PRESERVATIVE TEMPERATURE RANGE: -40°C~85°C
 6.P/N: WLDCF9-03 X 1 1 1 046

PLATED:
 1.G/F
 7.SN
 8.AG
 HOUSING:
 1.PA10T BLACK

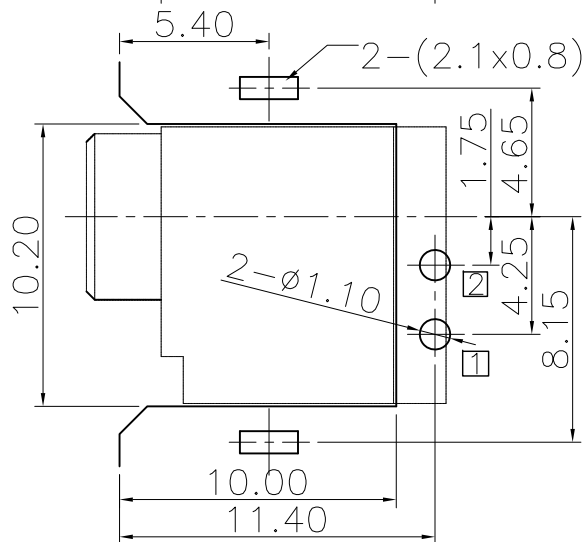
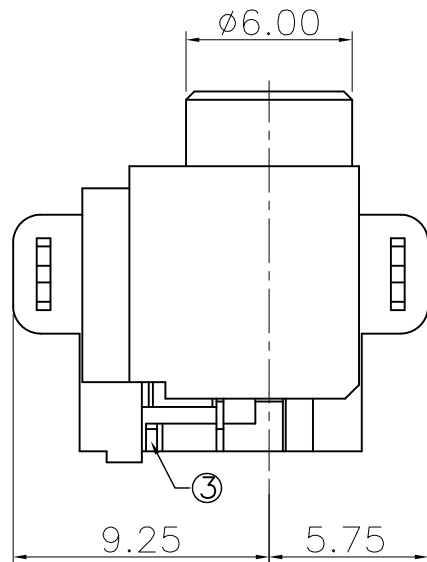
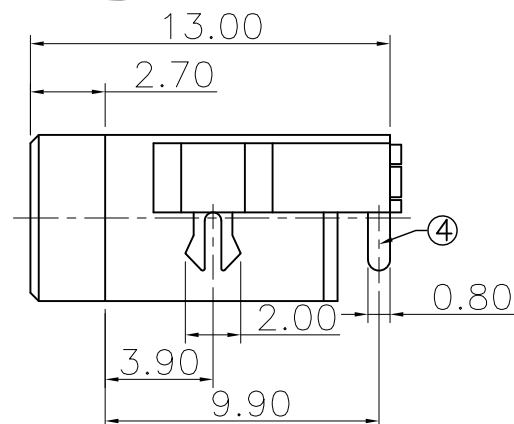
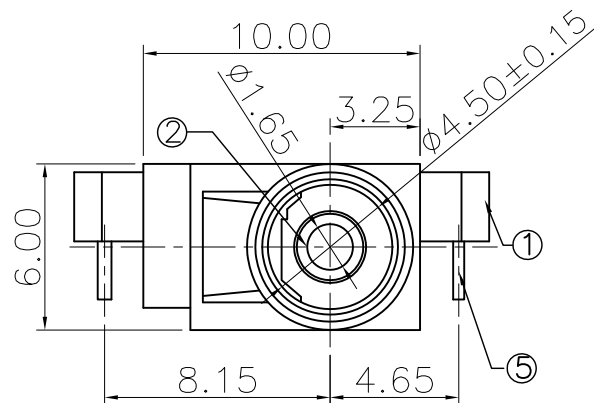
CIRCUIT DIAGRAM:
 1.TYPE B



□ : TERMINAL NO.



DC MATE PLUG



PCB HOLES(BOTTOM VIEW) t=1.6mm
 NOTE:GENERAL TOLERANCE:±0.05mm

REV.	REVISION RECORD	DATE		GENERAL TOLERANCES		SCALE: 1:1	NAME	DATE	PART.NO: WLDCF9-03X111046	DWG.NO: ENDE05		
A0	NEW RELEASE	21.01.13		LINEAR	ANGLES	APPROVED	Wang_jr	21.01.13				
			UNIT:mm	0.00±0.25	X°±3°	DESIGNER	Han_Gao	21.01.13	TITLE: DC POWER JACK		REV: A0	SHEET: 1/1
			SIZE: A4	0.000±0.10	X°X' ±2°	DRAWN	Zijun_Huang	21.01.13				