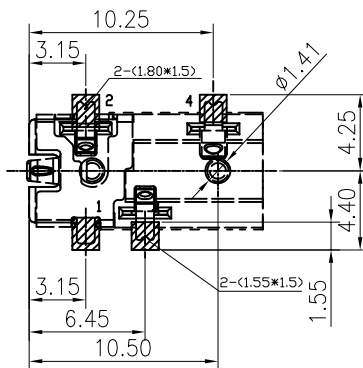
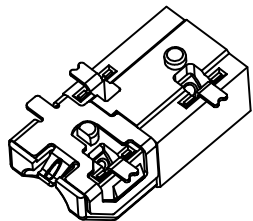
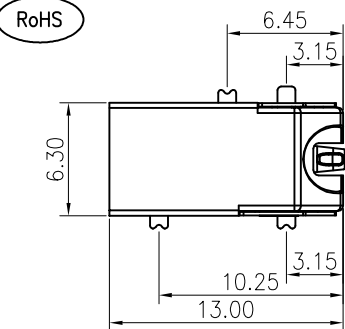
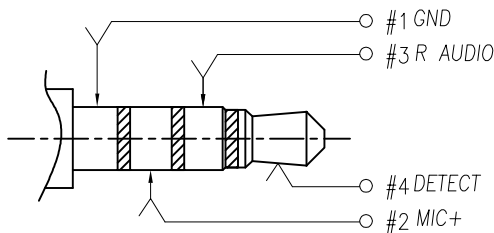
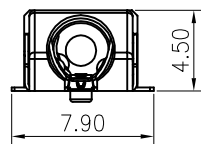
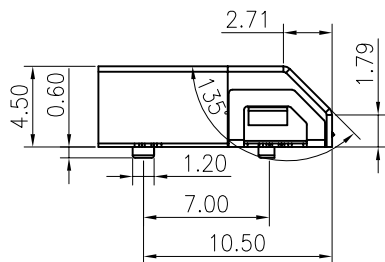


The product using material and processing must conform to the "WI-PZ-001"HSF technical standard control requirements



RECOMMEND PCB LAYOUT  
TOLERANCE:±0.05



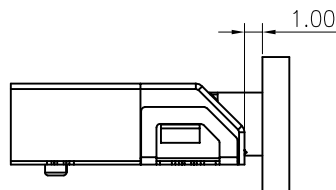
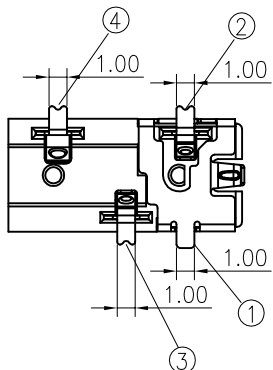
MALE PLUG SCHEMATIC

NOTE:

- 1.ELECTRICAL PERFORMANCE:  
 1-1.CURRENT RATING:1.0A  
 1-2.VOLTAGE RATING:12V MAX  
 1-3.CONTACT RESISTANCE: 50 milliOHM (Initial) Max.  
 1-4.INSULATION RESISTANCE: 100 MEGOHM Min.  
 1-5.DIELECTRIC WITHSTANDING VOLTAGE: 500V AC MIN.  
 2.ENVIRONMENTAL PERFORMANCE  
 OPERATING TEMPERATURE: -20°C~+85°C.

WLPJF9-04 2 X X 0 013

PLATING: 1-G/F  
 2-AU 3U"  
 5-AU 15U"  
 6-AU 30U"  
 COLOUR: A:Black



5	塑胶	LCP UL 94V-0, COLOR: BLACK	1PCS	
4	4号端子	C5210R-EH T=0.20 Plated Ni 50u" Min.Contact area: Gold Flash Plated	1PCS	
3	3号端子		1PCS	
2	2号端子		1PCS	
1	1号端子		1PCS	
ITEM	NAME		MATERIAL	Q'TY

REV.	REVISION RECORD	DATE		GENERAL TOLERANCES		SCALE: 1:1	NAME	DATE	PART.NO: WLPJF9-042XX0013	DWG.NO: ENDE05	
AO	NEW RELEASE	21.01.13		LINEAR	ANGLES	APPROVED	Wang_jr	21.01.13			
			0.0±0.35	X'REF±6'	DESIGNER	Ding_bo	21.01.13	TITLE: Ø3.50 JACK 斜口双柱板上型4.50H	REV: A0	SHEET: 1/1	
			UNIT:mm	0.00±0.25	X'±3'	DRAWN	Ou_jian		21.01.13		
			SIZE: A4	0.000±0.10	X'X' ±2'						