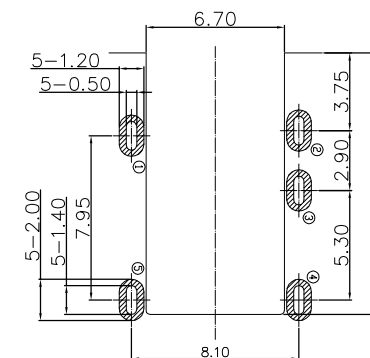
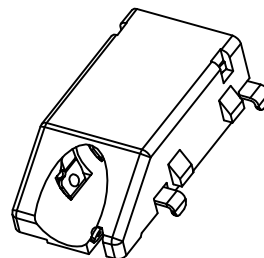
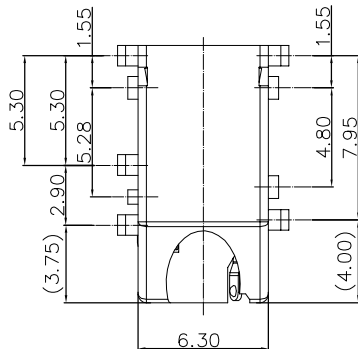


The product using material and processing must conform to the "WI-PZ-001"HSF technical standard control requirements

RoHS

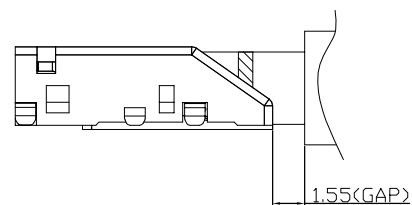
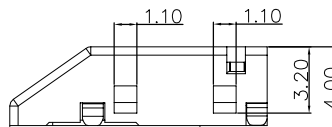
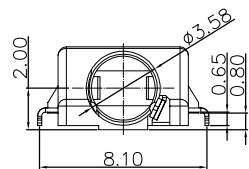
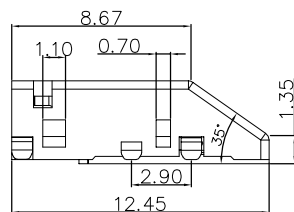


RECOMMEND PCB LAYOUT
TOLERANCE ±0.05

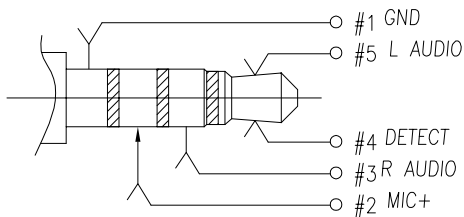
NOTE:

- 1.MATERIAL SPECIFICATION:
 - 1-1.HOUSING:THERMOPLASTIC, UL94V-0,
 - 1-2.CONTACTS:COPPER ALLOY.
- 2.PLATING SPECIFICATION:
 - 2-1.CONTACTS:
 - Ni 50u" MIN. UNDER PLATED OVER ALL.
 - Au PLATED ON THE FUNCTIONAL AREA OF CONTACT.
- 3.ELECTRICAL PERFORMANCE:
 - 3-1.CURRENT RATING:0.5A
 - 3-2.VOLTAGE RATING:12V MAX
 - 3-3.CONTACT RESISTANCE: 50 millioHM (Initial) Max.
 - 3-4.INSULATION RESISTANCE: 100 MEGOHM Min.
 - 3-5.DIELECTRIC WITHSTANDING VOLTAGE: 500V AC MIN.
- 4.ENVIRONMENTAL PERFORMANCE
 - OPERATING TEMPERATURE: -20°C~+85°C.

WLPJF9-05 8 X X 0 012
 COLOUR: A:Black
 PLATING:
 1-G/F
 2-AU 3U"
 5-AU 15U"
 6-AU 30U"



PLUG MATE DRAWING



MALE PLUG SCHEMATIC

REV.	REVISION RECORD	DATE		GENERAL TOLERANCES		SCALE: 1:1	NAME	DATE	PART.NO:	DWG.NO:		
A0	NEW RELEASE	21.01.13		LINEAR	ANGLES	APPROVED	Wang_jr	21.01.13	WLPJF9-058XX0012	ENDE05		
			UNIT:mm	0.00±0.25	X°±3°	DESIGNER	Ding_bo	21.01.13	TITLE:	03.5 JACK 3.8H DIP TYPE Heavy plate(0.8H)	REV: A0	SHEET: 1/1
			SIZE: A4	0.000±0.10	X°X' ±2°	DRAWN	Ou_jian	21.01.13				