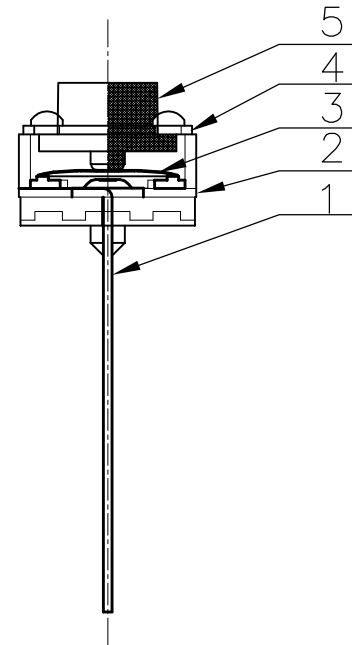
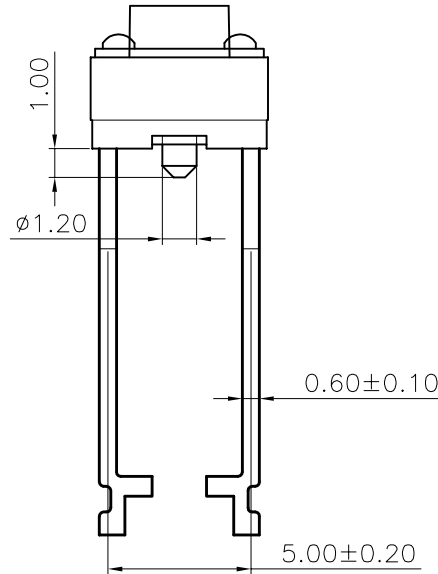
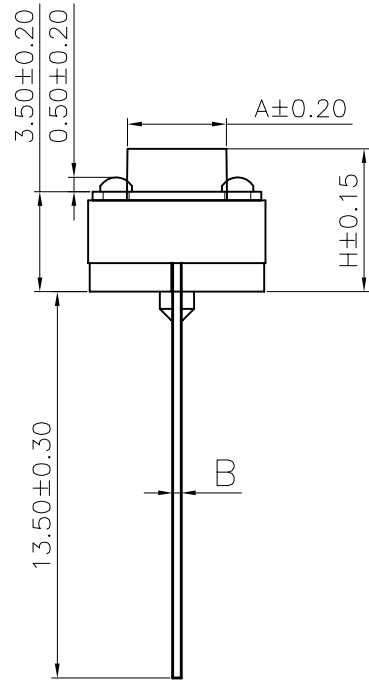


The product using material and processing must conform to the "WI-PZ-001"HSF technical standard control requirements

RoHS



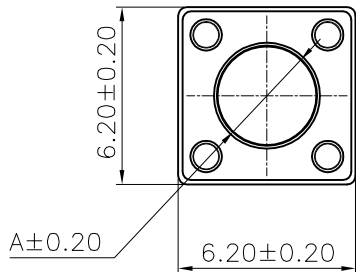
NOTE:

- 1.MATERIAL SPECIFICATION:
  - 1-1.CONTACTS:BRASS T=0.3mm
  - 1-2.HOUSING:PPA COLOUR:BLACK
  - 1-3.SHRAPNEL:φ5 STAINLESS STEEL
  - 1-4.COVER: BRASS
  - 1-5.BUTTON: PPA COLOUR:BLACK/RED.....
- 2.PLATING SPECIFICATION:
  - 2-1.CONTACT:AG PLATED ON CONTACT AREA
  - 2-2.SHRAPNEL:AG PLATED.
  - 2-3.COVER:SN PLATED.
- 3.ELECTRICAL PERFORMANCE:
  - 3-1.RATING CURRENT:50mA DC
  - 3-2.RATING VOLTAGE:12V DC
  - 3-3.CONTACT RESISTANCE: 100mΩ MAX;
  - 3-4.INSULATION RESISTANCE:100MΩ MIN
  - 3-5.WITHSTANDING VOLTAGE: AC 250V/50HZ,1MIN
- 4.MECHANICAL PERFORMANCE:
  - 4-1.DURABILITY: 100000 CYCLES.
- 5.OPERATION TEMPERATURE RANGE:-20°C~+85°C
- 6.PACKAGE SPEC:PE STRAP PACKING

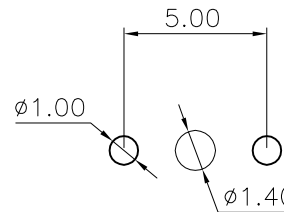
7.P/N: WLSW10-02 1 8 A X 054

PLATED: 8.AG  
COLOUR: A.BLACK

A.H=4.30mm  
B.H=4.50mm  
C.H=5.00mm  
D.H=5.50mm  
E.H=6.00mm  
F.H=6.50mm  
G.H=7.00mm  
H.H=7.50mm  
I.H=8.00mm  
.....



原理图



印刷线路板开孔

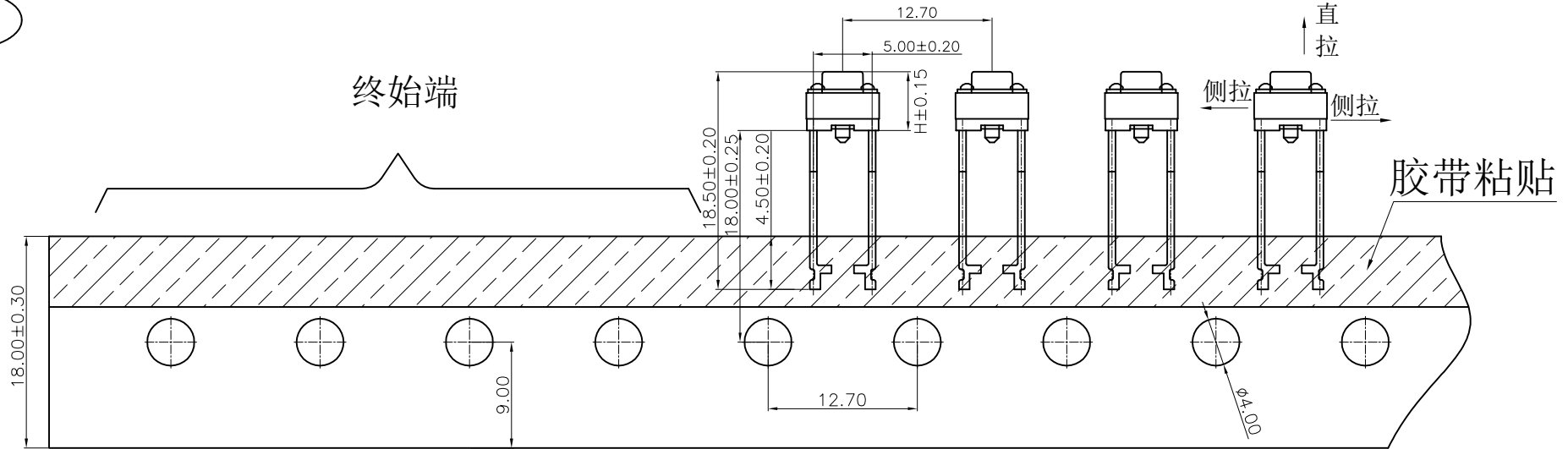
H	A	B
总高/mm	按钮顶部尺寸/mm	焊脚厚度/mm
4.3	3.5	0.3/0.4
4.5	3.5	
5.0	3.45	
5.5	3.35	
6.0	3.2	
6.5	3.15	
7.0	3.3	
7.5	3.1	
8.0	3.1	

N (接力量gf)				
100	160	250	350	.....

REV.	REVISION RECORD	DATE	GENERAL TOLERANCES		SCALE:	NAME	DATE	PART.NO:	DWG.NO:
A0	NEW RELEASE	21.01.13	LINEAR	ANGLES	1:1	Wang_jr	21.01.13	WLSW10-0218AX054	ENDE05
			0.0±0.35	X°REF±6°	APPROVED	Han_Gao	21.01.13	TITLE:	<p>WanLian Teconology Co., Ltd</p>
			0.00±0.25	X°±3°	DESIGNER	Zijun_Huang	21.01.13	TACT SWITCH	
			0.000±0.10	X°X' ±2°	DRAWN				
			UNIT:mm						REV: A0
			SIZE: A4						SHEET: 1/2

The product using material and processing must conform to the "WI-PZ-001" HSF technical standard control requirements

RoHS



技术要求:

1. 本产品不含环境危险物质, 适用于RoHS指令2011/65/EU要求。
2. 纸带: 用宽18mm, 厚0.45mm, 编带定位孔间距为 $12.7\pm 0.2$ mm。
3. 起始端和终止端分别空置5个位置, 防止裁脚使用时, 因上料而浪费; 正常编带后按24只空1个位置的顺序编带, 防止编带后折弯装盘变形。
4. 胶带粘贴的牢固度: 为了防止因粘贴不牢固而脱落, 或不同心而造成后续裁脚尺寸保证困难。要求其测拉力要大于1.5N, 直拉力要大于5N。

H (总高)			
4.3	4.5	5.0	5.5
6.0	6.5	7.0	7.5
8.0	8.5	9.0	9.5
10.0	10.5	11.0	11.5
12.0	12.5	13.0	13.5
14.0	14.5	15.0	.....

N (按力值gf)			
100	160	250	350 .....

部件规格表

序号	部件名称	部件材料	部件用量	其它
1	卡件	0.3黄铜	1PCS	镀银白色
2	基座	PPA	1PCS	黑色
3	弹片	Φ5进口不锈钢覆银	1PCS	镀银白色
4	盖板	黄铜	1PCS	镀锡
5	按钮	PPA	1PCS	黑色/红色.....
6				

REV.	REVISION RECORD	DATE	UNIT:mm	GENERAL TOLERANCES		SCALE:	NAME	DATE	PART.NO:	DWG.NO:	WanLian Teconology Co., Ltd
A0	NEW RELEASE	21.01.13			LINEAR	ANGLES	1:1	Wang_jr	21.01.13	WLSW10-0218AX054	
				0.0±0.35	X°REF±6°		DESIGNER	Han_Gao	21.01.13	TITLE:	REV: A0
				0.00±0.25	X'±3°		DRAWN	Zijun_Huang	21.01.13	TACT SWITCH PARKAGE DRAWING	SHEET: 2/2
				0.000±0.10	X''X'±2°						