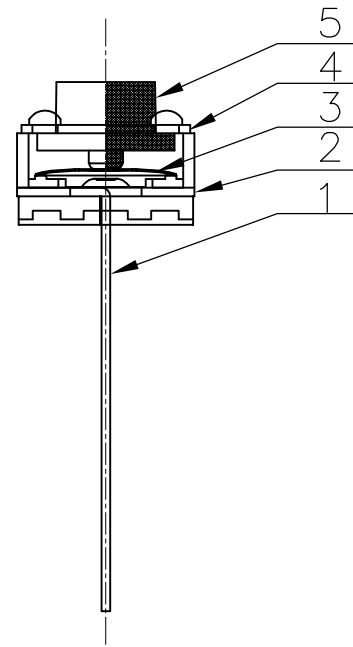
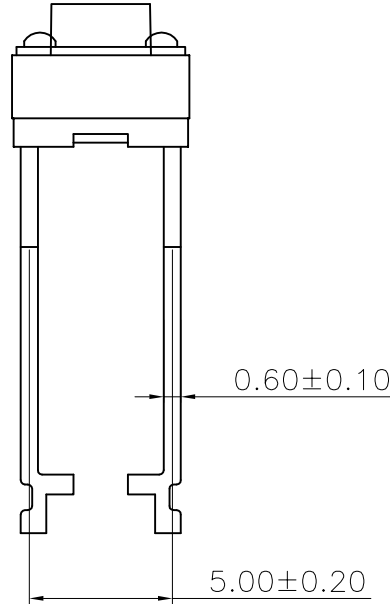
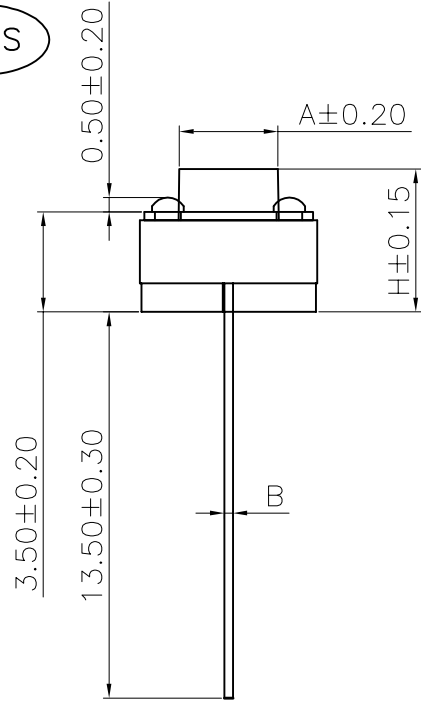


The product using material and processing must conform to the "WI-PZ-001"HSF technical standard control requirements

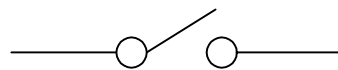
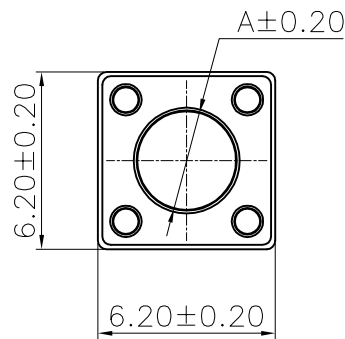
RoHS



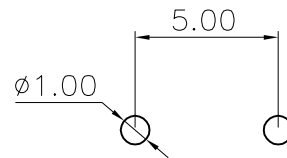
- NOTE:
- MATERIAL SPECIFICATION:
 - 1-1.CONTACTS:BRASS T=0.3mm
 - 1-2.HOUSING:PPA COLOUR:BALCK
 - 1-3.SHRAPNEL:φ5 STAINLESS STEEL
 - 1-4.COVER: BRASS
 - 1-5.BUTTON: PPA COLOUR:BLACK/RED.....
 - PLATING SPECIFICATION:
 - 2-1.CONTACT:AG PLATED ON CONTACT AREA
 - 2-2.SHRAPNEL:AG PLATED.
 - 2-3.COVER:SN PLATED.
 - ELECTRICAL PERFORMANCE:
 - 3-1.RATING CURRENT:50mA DC
 - 3-2.RATING VOLTAGE:12V DC
 - 3-3.CONTACT RESISTANCE: 100mΩ MAX;
 - 3-4.INSULATION RESISTANCE:100MΩ MIN
 - 3-5.WITHSTANDING VOLTAGE: AC 250V/50HZ,1MIN
 - MECHANICAL PERFORMANCE:
 - 4-1.DURABILITY: 100000 CYCLES.
 - OPERATION TEMPERATURE RANGE:-20°C~+85°C
 - PACKAGE SPEC:PE STRAP PACKING
 - P/N:

WLSW10-02 1 8 A X 057

- PLATED: 8.AG
COLOUR: A.BLACK
- A.H=4.30mm
 - B.H=4.50mm
 - C.H=5.00mm
 - D.H=5.50mm
 - E.H=6.00mm
 - F.H=6.50mm
 - G.H=7.00mm
 - H.H=7.50mm
 - I.H=8.00mm
 -



原理图



印刷线路板开孔

| H | A | B |
|-------|-----------|---------|
| 总高/mm | 按钮顶部尺寸/mm | 焊脚厚度/mm |
| 4.3 | 3.5 | 0.3/0.4 |
| 4.5 | 3.5 | |
| 5.0 | 3.45 | |
| 5.5 | 3.35 | |
| 6.0 | 3.2 | |
| 6.5 | 3.15 | |
| 7.0 | 3.3 | |
| 7.5 | 3.1 | |
| 8.0 | 3.1 | |

| N (按力值gf) | | | | |
|-----------|-----|-----|-----|-------|
| 100 | 160 | 250 | 350 | |

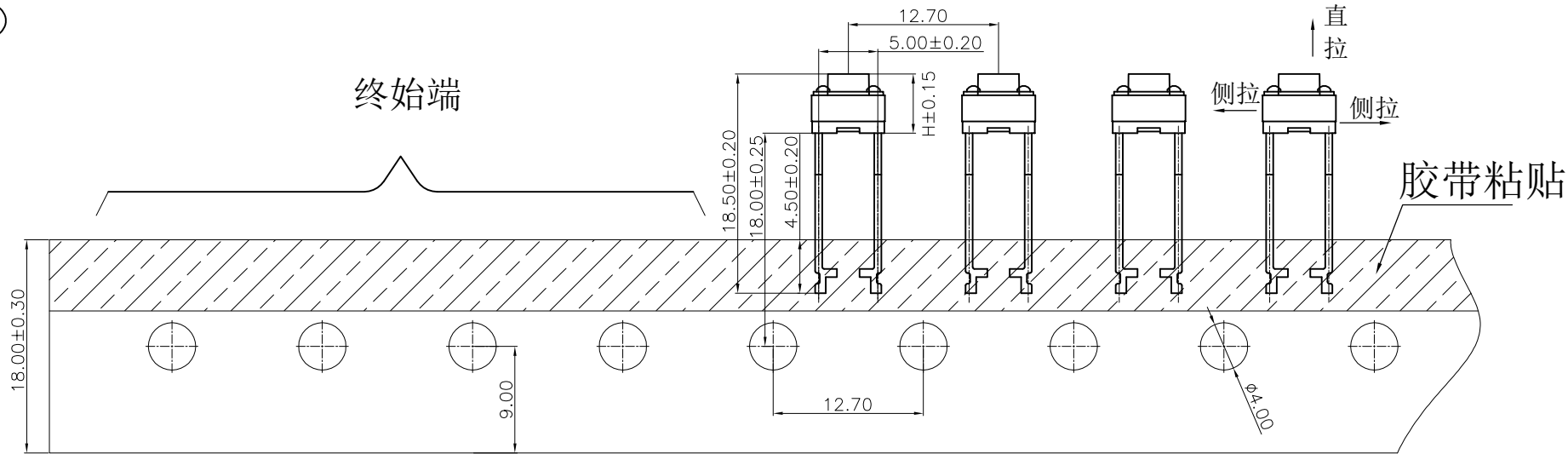
| REV. | REVISION RECORD | DATE | GENERAL TOLERANCES | | SCALE: | NAME | DATE | PART.NO: | DWG.NO: |
|------|-----------------|----------|--------------------|----------|----------|-------------|----------|------------------|------------|
| A0 | NEW RELEASE | 21.01.13 | LINEAR | ANGLES | 1:1 | Wang_jr | 21.01.13 | WLSW10-0218AX057 | ENDE05 |
| | | | 0.0±0.35 | X°REF±6° | APPROVED | Han_Gao | 21.01.13 | TITLE: | |
| | | | 0.00±0.25 | X°±3° | DESIGNER | Zijun_Huang | 21.01.13 | TACT SWITCH | |
| | | | 0.000±0.10 | X°X' ±2° | DRAWN | | | | |
| | | | UNIT:mm | | | | | | REV: A0 |
| | | | SIZE: A4 | | | | | | SHEET: 1/2 |

WanLian Teconology Co., Ltd

REV: A0 SHEET: 1/2

The product using material and processing must conform to the "WI-PZ-001"HSF technical standard control requirements

RoHS



技术要求:

1. 本产品不含环境有害物质, 适用于RoHS指令 2011/65/EU要求。
2. 纸带: 用宽18mm, 厚0.45mm, 编带定位孔间距为 12.7 ± 0.2 mm。
3. 起始端和终止端分别空置5个位置, 防止裁脚使用时, 因上料而浪费; 正常编带后按24只空1个位置的顺序编带, 防止编带后折弯装盘变形。
4. 胶带粘贴的牢固度: 为了防止因粘贴不牢固而脱落, 或不同心而造成后续裁脚尺寸保证困难。要求其测拉力要大于1.5N, 直拉力要大于5N。

| H (总高) | | | |
|--------|------|------|-------|
| 4.3 | 4.5 | 5.0 | 5.5 |
| 6.0 | 6.5 | 7.0 | 7.5 |
| 8.0 | 8.5 | 9.0 | 9.5 |
| 10.0 | 10.5 | 11.0 | 11.5 |
| 12.0 | 12.5 | 13.0 | 13.5 |
| 14.0 | 14.5 | 15.0 | |

| N (按力值gf) | | | |
|-----------|-----|-----|-----------|
| 100 | 160 | 250 | 350 |

部件规格表

| 序号 | 部件名称 | 部件材料 | 部件用量 | 其它 |
|----|------|-----------|------|------------|
| 1 | 卡件 | 0.3黄铜 | 1PCS | 镀银白色 |
| 2 | 基座 | PPA | 1PCS | 黑色 |
| 3 | 弹片 | φ5进口不锈钢覆银 | 1PCS | 镀银白色 |
| 4 | 盖板 | 黄铜 | 1PCS | 镀锡 |
| 5 | 按钮 | PPA | 1PCS | 黑色/红色..... |
| 6 | | | | |

| REV. | REVISION RECORD | DATE | GENERAL TOLERANCES | | SCALE: | NAME | DATE | PART.NO: | DWG.NO: | WanLian Teconology Co., Ltd |
|------|-----------------|----------|--------------------|------------|----------|-------------|----------|-----------------------------|------------|---------------------------------|
| A0 | NEW RELEASE | 21.01.13 | LINEAR | ANGLES | 1:1 | Wang_jr | 21.01.13 | WSW10-0218AX057 | ENDE05 | |
| | | | 0.0±0.35 | X*REF±6° | APPROVED | Han_Gao | 21.01.13 | TITLE: | REV: A0 | |
| | | | 0.00±0.25 | X'±3° | DESIGNER | Zijun_Huang | 21.01.13 | TACT SWITCH PARKAGE DRAWING | SHEET: 2/2 | |
| | | | UNIT:mm | X*X' ±2° | DRAWN | | | | | |
| | | | SIZE: A4 | 0.000±0.10 | | | | | | |