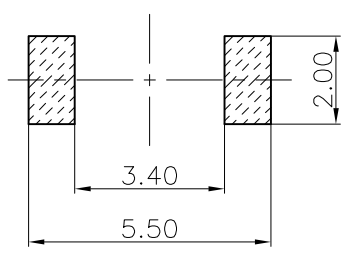
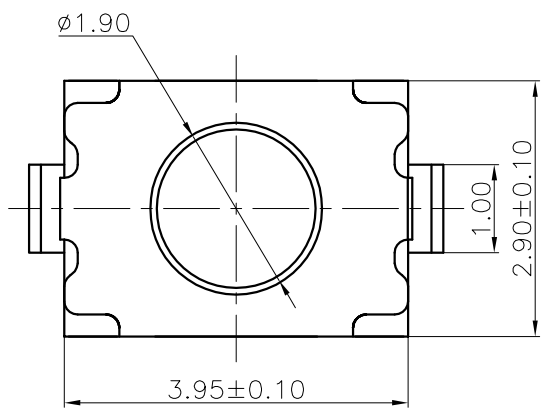
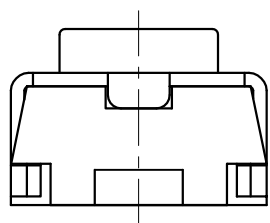
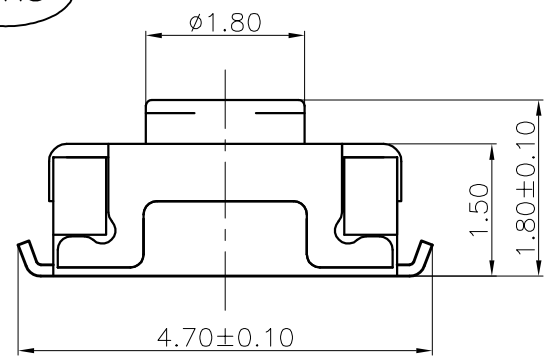


The product using material and processing must conform to the "WL-PZ-001"HSF technical standard control requirements

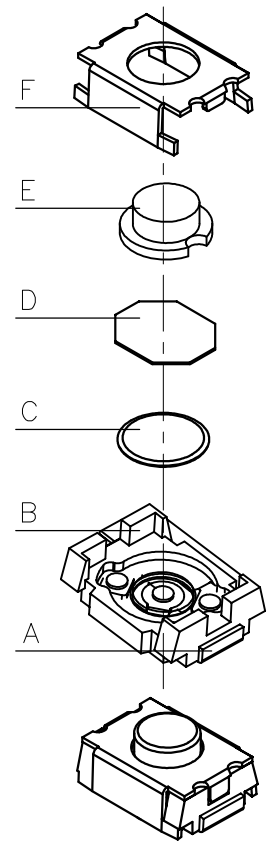
NOTE:

- 1.MATERIAL SPECIFICATION:
 1-1.TERMINAL:PHOSPHOR BRONZE
 1-2.HOUSING:LCP COLOUR:BLACK
 1-3.CONTACT:STAINLESS STEEL
 1-4.WATERPROOF FILM: POLYIMIDE FILM COLOUR:YELLOW
 1-5.BUTTON:LCP COLOUR:GREY
 1-6.SHELL:STAINLESS STEEL
 2.PLATING SPECIFICATION:
 2-1.TERMINAL:AG PLATING ON CONTACT AREA.
 2-2.CONTACT:AG PLATING ON CONTACT AREA.
 3.ELECTRICAL PERFORMANCE:
 3-1.RATING CURRENT:0.5A
 3-2.RATING VOLTAGE:30V
 3-3.CONTACT RESISTANCE: 100mΩ MAX;
 3-4.INSULATION RESISTANCE:100MΩ MIN
 3-5.WITHSTANDING VOLTAGE: 250V AC
 4.MECHANICAL PERFORMANCE:
 4-1.ACTION FORCE: 100GF-320GF
 5.OPERATION TEMPERATURE RANGE:-20°C~+85°C
 6.P/N:

RoHS

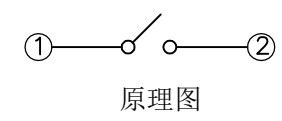


安装参考尺寸



WLSW10-02 2 X X 0 043

PLATED:
 1.G/F
 7.SN
 8.AG
 COLOUR:
 A.BLACK



REV.	REVISION RECORD	DATE		GENERAL TOLERANCES		SCALE: 1:1	NAME	DATE	PART.NO: WLSW10-022XX0043	DWG.NO: ENDE05	
AO	NEW RELEASE	21.01.13		LINEAR	ANGLES	APPROVED	Wang_jr	21.01.13			
			0.0±0.35	X'REF±6°	DESIGNER	Han_Gao	21.01.13	TITLE: TACT SWITCH			
			UNIT:mm	0.00±0.25	X'±3°	DRAWN	Zijun_Huang	21.01.13			
			SIZE: A4	0.000±0.10	X'X' ±2°				REV: A0	SHEET: 1/1	