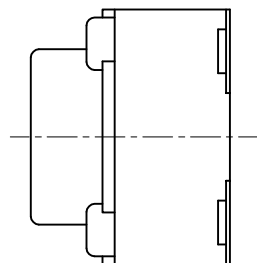
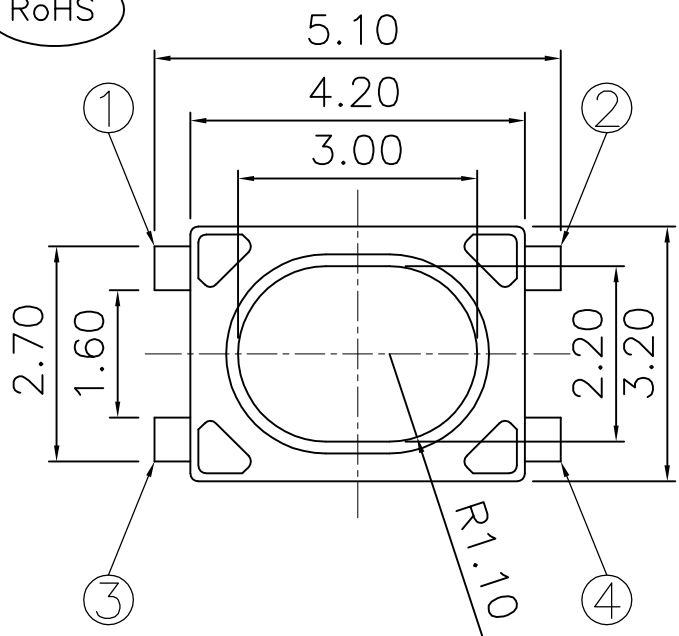


The product using material and processing must conform to the "WL-PZ-001"HSF technical standard control requirements

RoHS

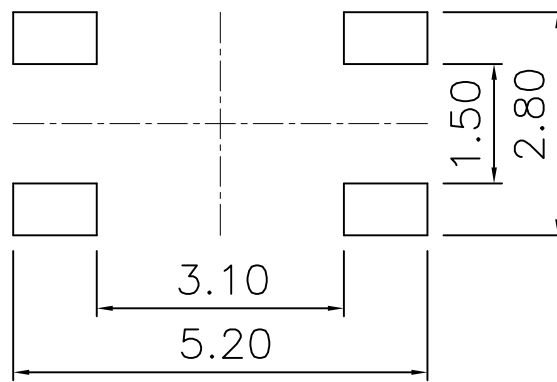
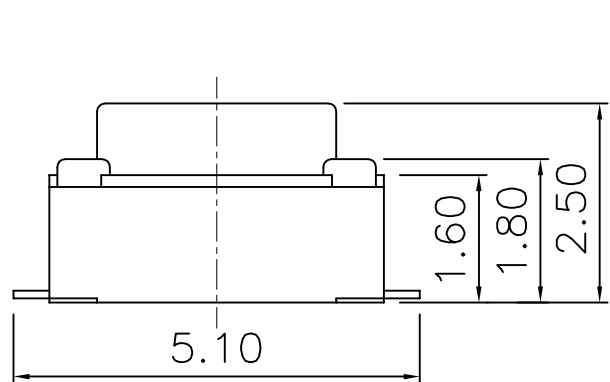


NOTE:

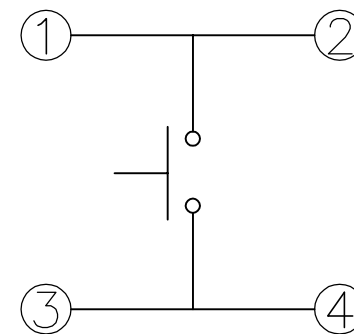
- 1.MATERIAL SPECIFICATION:
 - 1-1.HOUSING:PPA
 - 1-2.TERMINAL:COPPER ALLOY
- 2.PLATING SPECIFICATION:
 - 2-1.TERMINAL:AG PLATING ON CONTACT AREA.
- 3.ELECTRICAL PERFORMANCE:
 - 3-1.RATING CURRENT:0.5A
 - 3-2.RATING VOLTAGE:30V
 - 3-3.CONTACT RESISTANCE: 100mΩ MAX;
 - 3-4.INSULATION RESISTANCE:100MΩ MIN
 - 3-5.WITHSTANDING VOLTAGE: 250V AC
- 4.OPERATION TEMPERATURE RANGE:-20°C~+85°C
- 5.P/N: WLSW10-02 2 X X 0 044

PLATED: 1.G/F
7.SN
8.AG

COLOUR: A.BLACK



RECOMMENDED PCB LAYOUT



CIRCUIT DIAGRAM

REV.	REVISION RECORD	DATE		GENERAL TOLERANCES		SCALE: 1:1	NAME	DATE	PART.NO: WLSW10-022XX0044	DWG.NO: ENDE05	
A0	NEW RELEASE	21.01.13		LINEAR	ANGLES	APPROVED	Wang_jr	21.01.13			
			0.0±0.35	X'REF±6°	DESIGNER	Han_Gao	21.01.13	TITLE: TACA SWITCH			
			UNIT:mm	0.00±0.25	X'±3°	DRAWN	Zijun_Huang		21.01.13		
			SIZE: A4	0.000±0.10	X'X' ±2°				REV: A0	SHEET: 1/1	