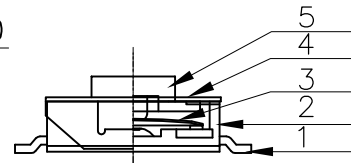
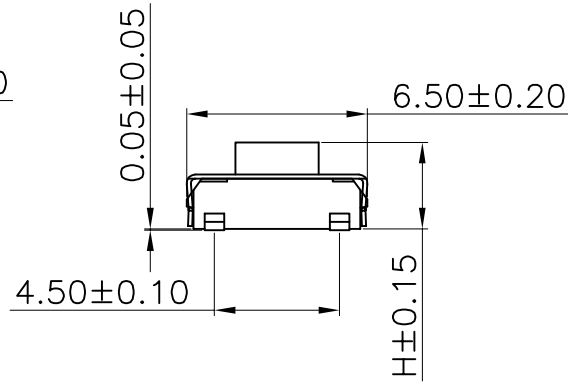
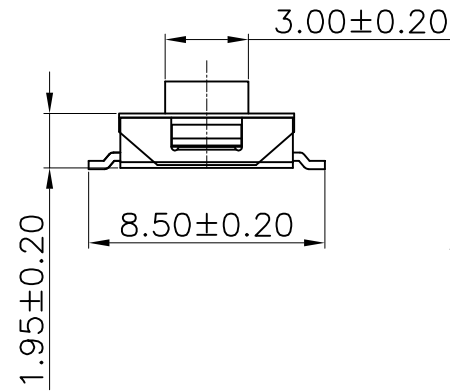


The product using material and processing must conform to the "WI-PZ-001"HSF technical standard control requirements

RoHS

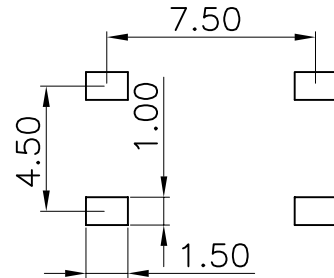
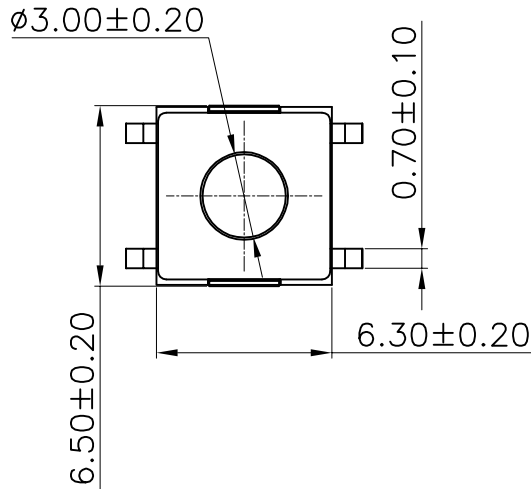


NOTE:

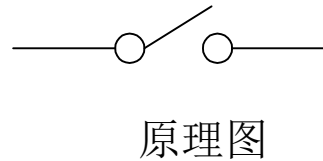
- MATERIAL SPECIFICATION:
  - CONTACTS:BRASS T=0.3mm
  - HOUSING:PPA COLOUR:BLACK
  - SHRAPNEL:φ5 STAINLESS STEEL
  - COVER: PHOSPHOR COPPER
  - BUTTON: PPA COLOUR:RED/BLACK
- PLATING SPECIFICATION:
  - CONTACT:AG PLATING ON CONTACT AREA
  - SHRAPNEL:AG PLATING.
  - COVER:SN PLATING.
- ELECTRICAL PERFORMANCE:
  - RATING CURRENT:50mA DC
  - RATING VOLTAGE:12V DC
  - CONTACT RESISTANCE: 100mΩ MAX;
  - INSULATION RESISTANCE:100MΩ MIN
  - WITHSTANDING VOLTAGE: AC 250V/50HZ,1MIN
- MECHANICAL PERFORMANCE:
  - DURABILITY: 100000 CYCLES.
- OPERATION TEMPERATURE RANGE:-20°C~+85°C
- PACKAGE SPEC: REEL
- P/N:

WLSW10-04 2 8 A X 049

PLATED: 8.AG  
COLOUR: A.BLACK  
A.H=2.50mm  
B.H=3.10mm  
C.H=3.40mm  
D.H=4.30mm  
E.H=5.00mm



印刷线路板开孔



原理图

N (按力值gf)				
100	160	250	350	.....

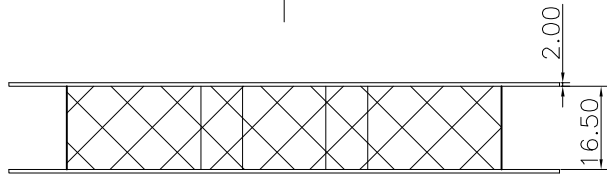
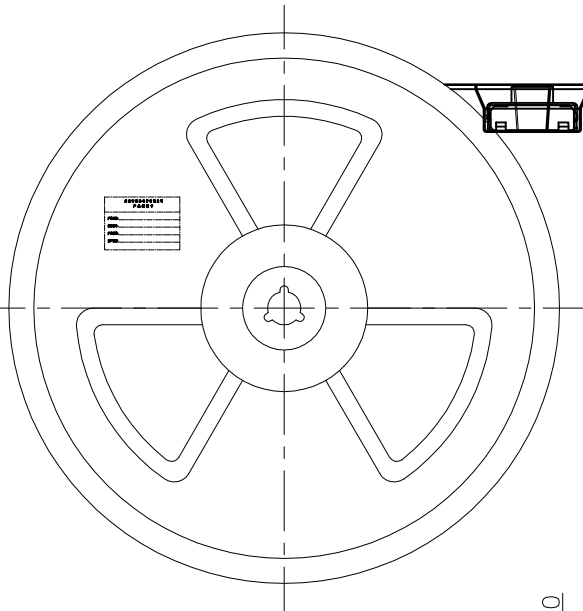
REV.	REVISION RECORD	DATE	UNIT:mm	GENERAL TOLERANCES		SCALE: 1:1	NAME	DATE	PART.NO:	DWG.NO:	WanLian Teconology Co., Ltd
A0	NEW RELEASE	21.01.13		LINEAR	ANGLES	APPROVED	Wang_jr	21.01.13	WLSW10-0428AX049	ENDE05	
			0.00±0.25	X°±3°	DESIGNER	Han_Gao	21.01.13	TITLE: TACT SWITCH		REV: A0	SHEET: 1/2
			0.000±0.10	X°X' ±2°	DRAWN	Zijun_Huang	21.01.13				



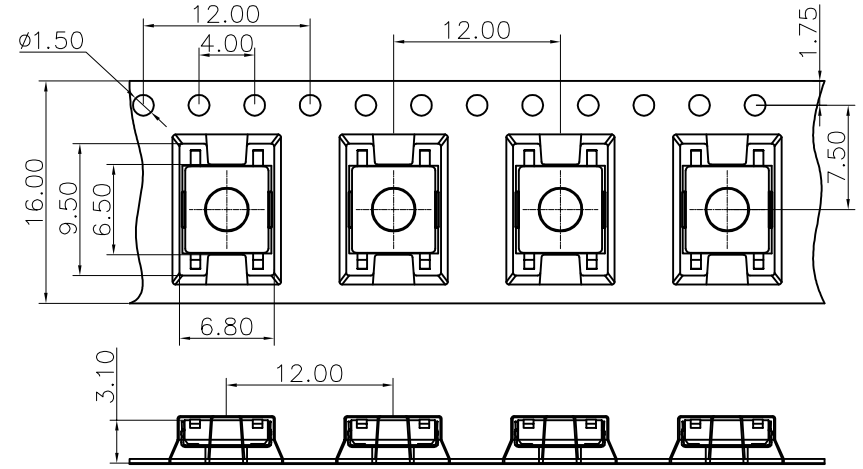
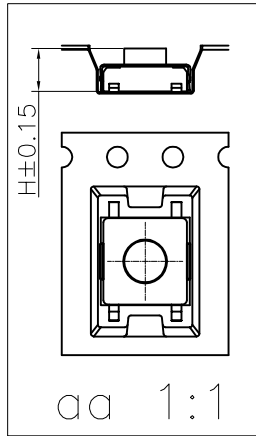
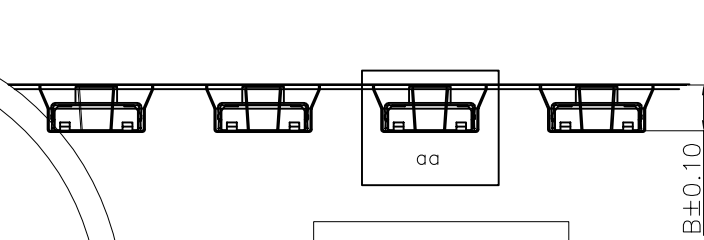
The product using material and processing must conform to the "WI-PZ-001" HSF technical standard control requirements

RoHS

PULL OUT DIRCTION  
出料方向



卷盘



技术要求:

1. 本产品不含环境危险物质, 适用于RoHS指令2011/65/EU要求。
2. 吸塑盒: 用长6.5mm, 宽6.8mm, 编带定位孔间距为 $4 \pm 0.05$ mm。
3. 编带封塑时, 一定要注意其封塑牢固度, 无因封带开裂而导致产品脱落等不良现象。
4. 卷盘起始段要预留5到10PCS的空槽, 防止因卷盘内圆过小导致产品焊脚损坏; 卷盘末端预留一外圈的空槽或隔离封塑带, 防止卷盘在运输过程中的意外碰撞因素而导致产品的损坏; 一卷盘按产品高度规格对应的要求数量进行编带。

部件规格表

序号	部件名称	部件材料	部件用量	其它
1	卡件	0.3黄铜	1PCS	镀银白色
2	基座	PPA	1PCS	黑色
3	弹片	Φ5进口不锈钢覆银	1PCS	镀银白色
4	盖板	磷铜	1PCS	镀锡
5	按钮	PPA	1PCS	红色/黑色
6				

REV.	REVISION RECORD	DATE	GENERAL TOLERANCES	SCALE:	NAME	DATE	PART.NO:	DWG.NO:	 WanLian Teconology Co., Ltd
A0	NEW RELEASE	21.01.13	LINEAR	1:1	Wang_jr	21.01.13	WSLW10-0428AX049	ENDE05	
			0.0±0.35	APPROVED	Han_Gao	21.01.13	TITLE:	REV: A0	
			0.00±0.25	DESIGNER	Zijun_Huang	21.01.13	TACT SWITCH PACKAGE DRAWING	SHEET: 2/2	