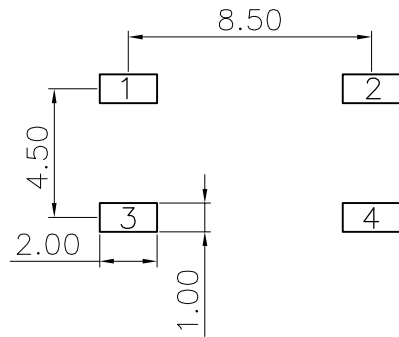
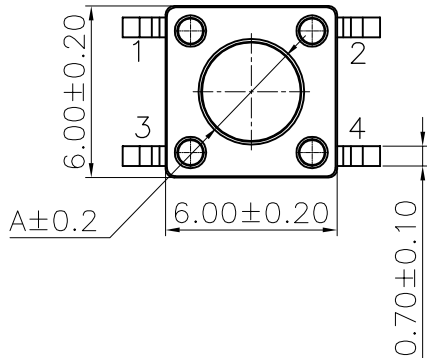
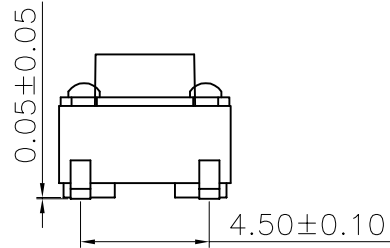
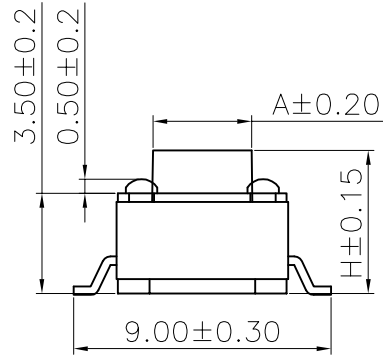
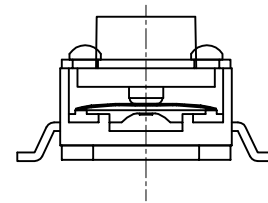
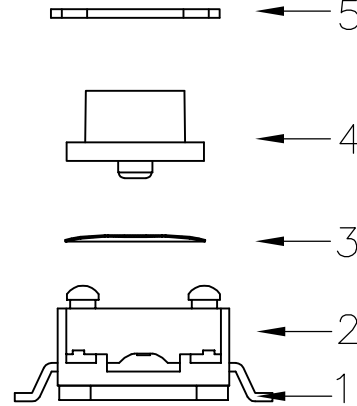


The product using material and processing must conform to the "WI-PZ-001" HSF technical standard control requirements

RoHS



印刷线路板开孔



产品零部件剖析图

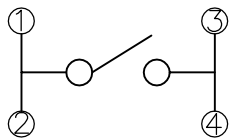
NOTE:
 1.MATERIAL SPECIFICATION:
 1-1.CONTACTS:BRASS T=0.3mm
 1-2.HOUSING:PPA COLOUR:BLACK
 1-3.SHRAPNEL:φ5 STAINLESS STEEL
 1-4.COVER: BRASS
 1-5.BUTTON: PPA COLOUR:BLACK
 2.PLATING SPECIFICATION:
 2-1.CONTACT:AG PLATED ON CONTACT AREA
 2-2.SHRAPNEL:AG PLATED.
 2-3.COVER:SN PLATED.
 3.ELECTRICAL PERFORMANCE:
 3-1.RATING CURRENT:50mA DC
 3-2.RATING VOLTAGE:12V DC
 3-3.CONTACT RESISTANCE: 100mΩ MAX;
 3-4.INSULATION RESISTANCE:100MΩ MIN
 3-5.WITHSTANDING VOLTAGE: AC 250V/50HZ,1MIN
 4.MECHANICAL PERFORMANCE:
 4-1.DURABILITY: 100000 CYCLES.
 5.OPERATION TEMPERATURE RANGE:-20°C~+85°C
 6.PACKAGE SPEC: REEL
 7.P/N:

WLSW10-04 2 8 A X 058

PLATED: 8.AG
 COLOUR: A.BLACK
 A.H=4.30mm
 B.H=4.50mm
 C.H=5.00mm
 D.H=5.50mm
 F.H=6.50mm
 G.H=7.00mm
 H.H=7.50mm
 I.H=8.00mm

H	A
总高/mm	按钮顶部尺寸/mm
4.3	3.5
4.5	3.5
5.0	3.45
5.5	3.35
6.0	3.2
6.5	3.15
7.0	3.3
7.5	3.1
8.0	3.1

N (按力值gf)				
100	160	250	350



原理图

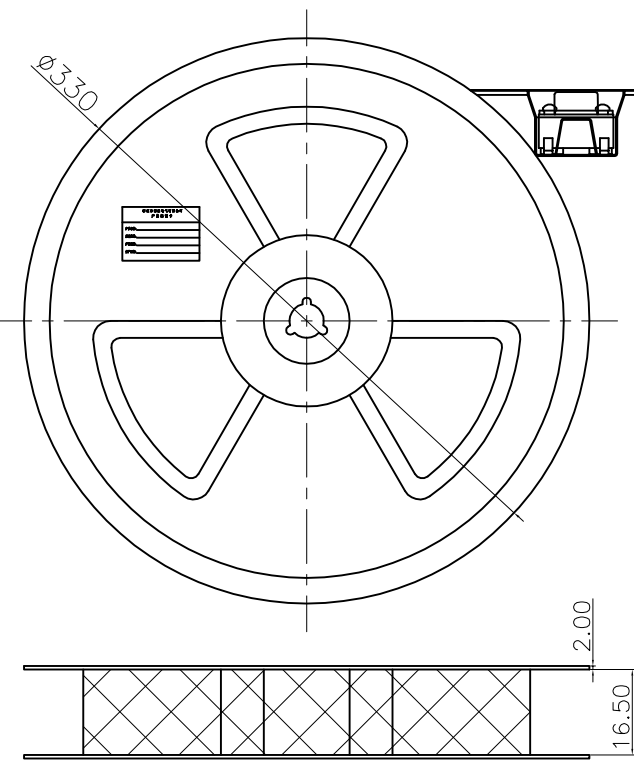
REV.	REVISION RECORD	DATE	GENERAL TOLERANCES		SCALE: 1:1	NAME	DATE	PART.NO:	DWG.NO:
A0	NEW RELEASE	21.01.13	LINEAR	ANGLES	APPROVED	Wang_jr	21.01.13	WLSW10-0428AX058	ENDE05
			0.0±0.35	X°REF±6°	DESIGNER	Han_Gao	21.01.13	TITLE:	 WanLian Teconology Co., Ltd
			0.00±0.25	X°±3°	DRAWN	Zijun_Huang	21.01.13	TACT SWITCH	
			UNIT:mm	0.00±0.10					REV: A0
			SIZE: A4	X°X' ±2°					SHEET: 1/2

The product using material and processing must conform to the "WI-PZ-001" HSF technical standard control requirements

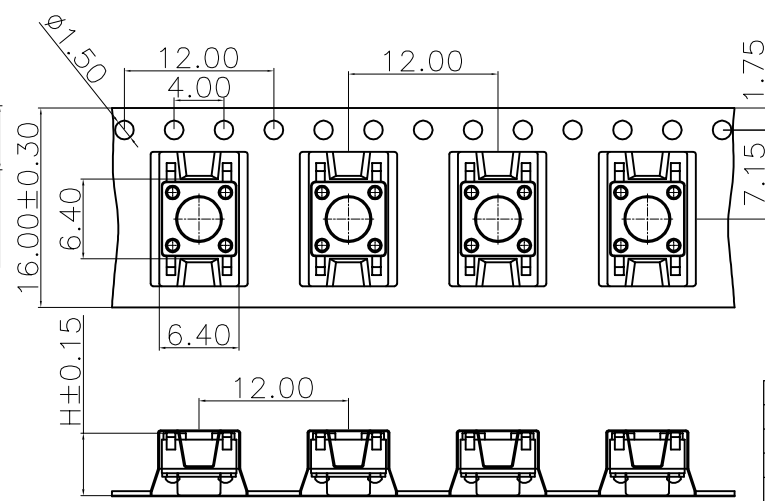
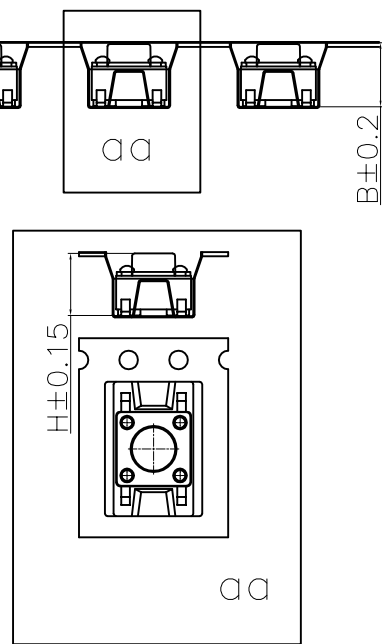
RoHS

PULL OUT DIRCTION

出料方向



卷盘



H (总高mm)	B (料带筒深mm)
4.3	5.2
4.5	5.2
5.0	5.2
5.5	5.7
6.0	6.2
6.5	6.7
7.0	7.2
7.5	7.7
8.0	8.2
8.5	8.7
9.0	9.2
9.5	9.7
.....

N (按力值gf)				
100	160	250	350

部件规格表

序号	部件名称	部件材料	部件用量	其它
1	卡件	0.3黄铜	1PCS	镀银白色
2	底座	PPA	1PCS	黑色
3	弹片	Φ5进口不锈钢覆银	1PCS	镀银白色
4	盖板	黄铜	1PCS	镀锡
5	按钮	PPA	1PCS	黑色
6				

技术要求：
 1. 本产品不含环境危险物质，适用于RoHS指令2011/65/EU要求。
 2. 吸塑盒：用长6.4mm，宽6.4mm，编带定位孔间距为4±0.05mm。
 3. 编带封塑时，一定要注意其封塑牢固度，无因封带开裂而导致产品脱落等不良现象。
 4. 卷盘起始段要预留5到10PCS的空槽，防止卷盘内圆卷圈过小导致产品焊脚损坏；卷盘末端预留一外圈的空槽，防止卷盘碰撞对产品的损失；一卷盘按规定高度要求数量进行编带。

REV.	REVISION RECORD	DATE	GENERAL TOLERANCES		SCALE:	NAME	DATE	PART.NO:	DWG.NO:	 WanLian Teconology Co., Ltd
A0	NEW RELEASE	21.01.13	LINEAR	ANGLES	1:1	Wang_jr	21.01.13	WLSW10-0428AX058	ENDE05	
			0.0±0.35	X°REF±6°	APPROVED	Han_Gao	21.01.13	TITLE:	REV: A0	
			0.00±0.25	X'±3°	DESIGNER	Zijun_Huang	21.01.13	TACT SWITCH PACKAGE DRAWING	SHEET: 2/2	
			UNIT:mm	0.00±0.10	X'X'±2°	DRAWN				