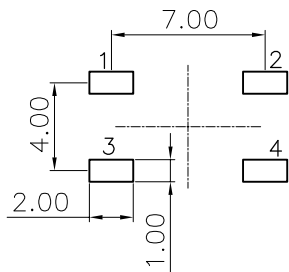
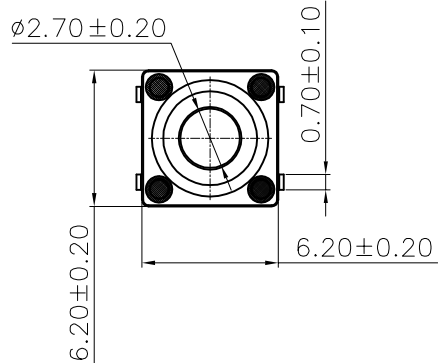
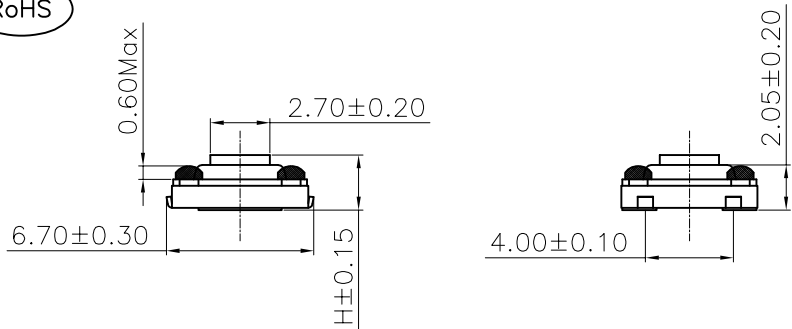
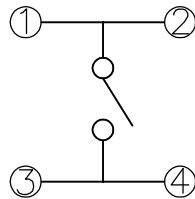


The product using material and processing must conform to the "WI-PZ-001"HSF technical standard control requirements

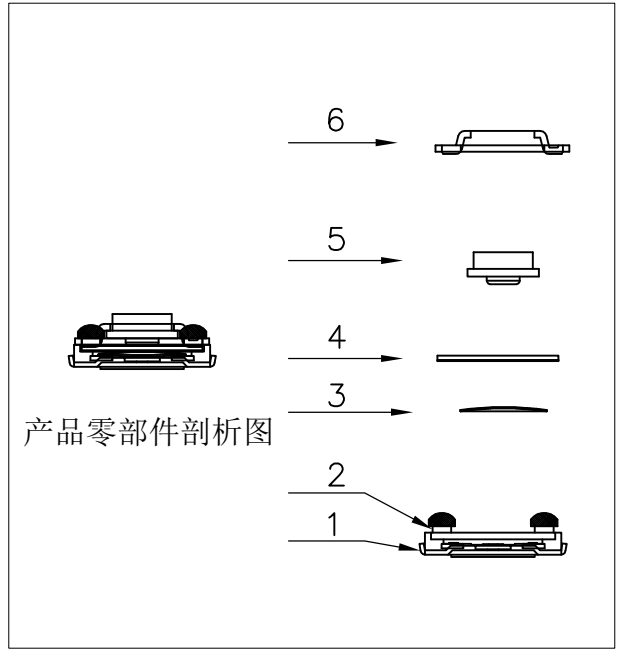
RoHS



印刷线路板开孔



原理图



NOTE:  
 1.MATERIAL SPECIFICATION:  
 1-1.CONTACTS:BRASS T=0.2mm  
 1-2.HOUSING:LCP COLOUR:GRAY  
 1-3.SHRAPNEL:φ4 STAINLESS STEEL  
 1-4.COMPOSITE WATERPROOF ADHESIVE: POLYIMIDE COLOUR:WHITE AND YELLOW  
 1-5.BUTTON: LCP COLOUR:GRAY/NATURE  
 1-6.COVER: STAINLESS STEEL ACID WASHING  
 2.PLATING SPECIFICATION:  
 2-1.CONTACT:AG PLATING ON CONTACT AREA  
 2-2.SHRAPNEL:AG PLATING.  
 3.ELECTRICAL PERFORMANCE:  
 3-1.RATING CURRENT:50mA DC  
 3-2.RATING VOLTAGE:12V DC  
 3-3.CONTACT RESISTANCE: 100mΩ MAX;  
 3-4.INSULATION RESISTANCE:100MΩ MIN  
 3-5.WITHSTANDING VOLTAGE: AC 250V/50HZ,1MIN  
 4.MECHANICAL PERFORMANCE:  
 4-1.PRESS FORCE: N+50GF  
 4-2.DURABILITY: 100000 CYCLES.  
 4-3.WATERPROOF:IP67  
 5.OPERATION TEMPERATURE RANGE:-20°C~+85°C  
 6.PACKAGE SPEC: REEL  
 7.P/N: WLSW10-04 2 8 J X 048

PLATED:  
 8.AG  
 COLOUR:  
 J.GRAY  
 A.H=2.50mm  
 B.H=3.10mm  
 C.H=3.40mm  
 D.H=4.00mm  
 E.H=4.30mm  
 F.H=5.00mm  
 .....

N (按力值gf)				
130	160	250	350	.....

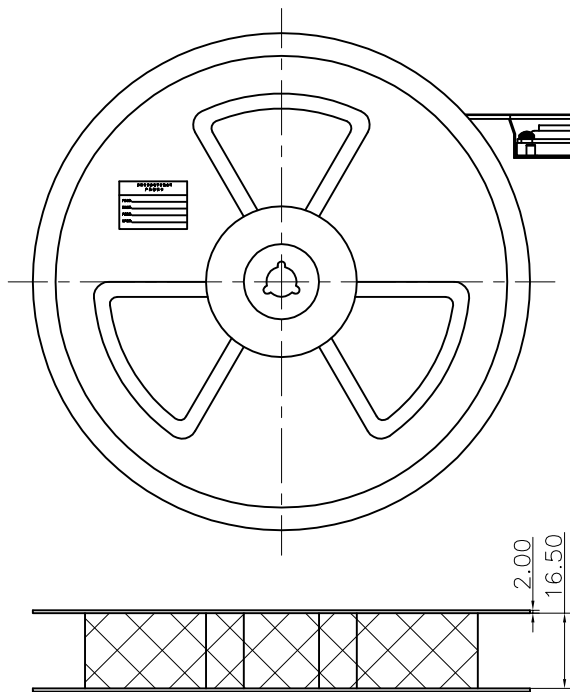
REV.	REVISION RECORD	DATE	UNIT:mm	GENERAL TOLERANCES		SCALE: 1:1	NAME	DATE	PART.NO: WLSW10-0428JX048	DWG.NO: ENDE05	
A0	NEW RELEASE	21.01.13		0.00±0.25	ANGLES X°REF±6°	APPROVED	Wang_jr	21.01.13			
			SIZE: A4	0.00±0.10	X°X' ±2°	DESIGNER	Han_Gao	21.01.13	TITLE: TACT SWITCH	REV: A0	SHEET: 1/2
						DRAWN	Zijun_Huang	21.01.13			

The product using material and processing must conform to the "WI-PZ-001" HSF technical standard control requirements

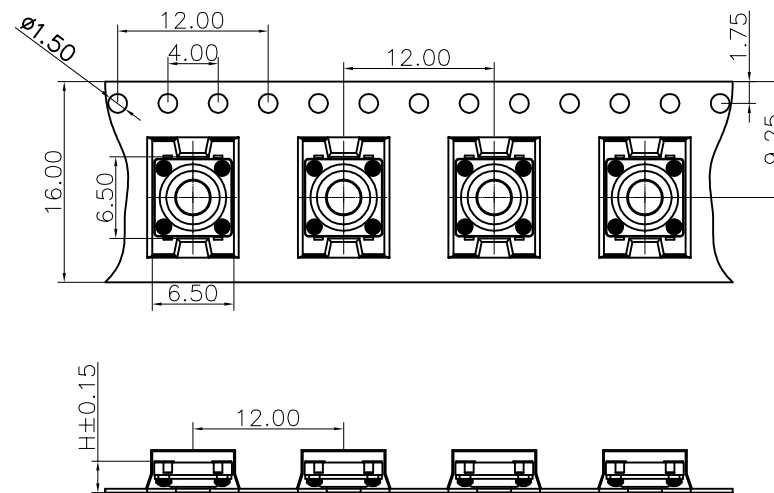
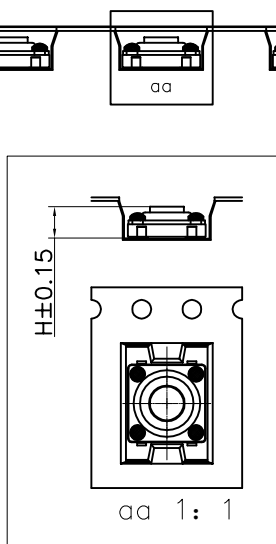
RoHS

PULL OUT DIRCTION

出料方向



卷盘



技术要求:

1. 本产品不含环境危险物质, 适用于RoHS指令2011/65 / EU要求。
2. 吸塑盒: 用长6.5mm, 宽6.5mm, 编带定位孔间距为 $4\pm 0.05$ mm。
3. 编带封塑时, 一定要注意其封塑牢固度, 无因封带开裂而导致产品脱落等不良现象。
4. 卷盘起始段要预留5到10PCS的空槽, 防止因卷盘内圆过小导致产品焊脚损坏; 卷盘末端预留一外圈的空槽或隔离封塑带, 防止卷盘在运输过程中的意外碰撞因素而导致产品的损坏; 一卷盘按1500PCS的数量进行编带。

部件规格表

序号	部件名称	部件材料	部件用量	其它
130   160   250   350   .....				
H (总高mm)	B (料带筒深mm)			
1	卡件	0.2黄铜	1PCS	镀银白色
2	基座	LCP	1PCS	灰色
3	弹片	Φ4进口不锈钢覆银	1PCS	镀银白色
4	复合防水胶	聚酰亚胺 (防水胶+防水膜)	1PCS	乳白胶+黄膜
5	按钮	LCP	1PCS	灰色/米白色
6	盖板	不锈钢	1PCS	酸洗
7				

REV.	REVISION RECORD	DATE		GENERAL TOLERANCES		SCALE: 1:1	NAME	DATE	PART.NO: WLSW10-0428JX048	DWG.NO: ENDE05	
A0	NEW RELEASE	21.01.13		LINEAR	ANGLES	APPROVED	Wang_jr	21.01.13			
			UNIT:mm	0.00±0.25	X'±3'	DESIGNER	Han_Gao	21.01.13	TITLE: TACT SWITCH PACKAGE DRAWING		REV: A0
			SIZE: A4	0.000±0.10	X'X' ±2'	DRAWN	Zijun_Huang	21.01.13			