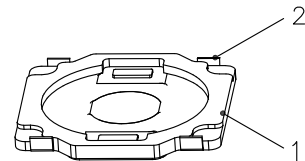
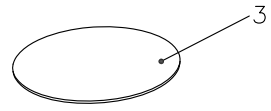
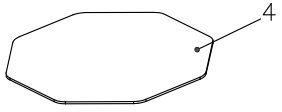
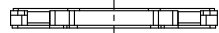
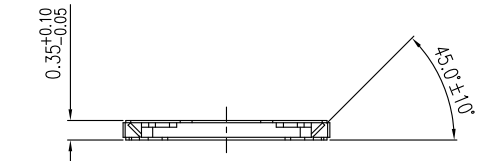


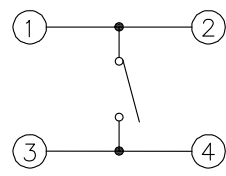
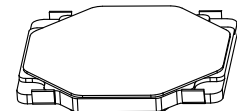
The product using material and processing must conform to the "WI-PZ-001"HSF technical standard control requirements

RoHS

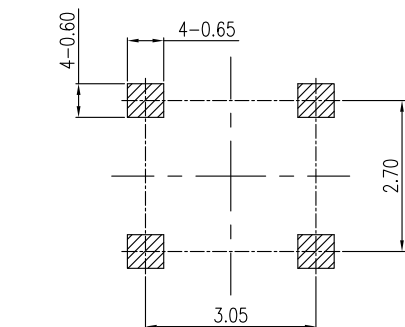
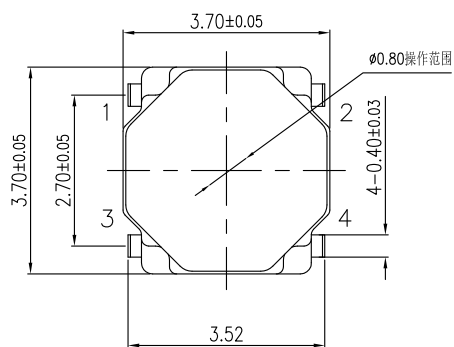
垂直按动  
PRESS VERTICALLY



分解视图  
EXPLODED VIEWS



电路图  
CIRCUIT DIAGRAM



印刷板安装孔图  
P.C.B MOUNTING PATTERN DIMENSION

NO.	名称 PART NAME	表面状态 FINISHING	数量 QTY.	备注 REMARK
4	贴纸	黄色	1	
3	弹片	覆银	1	
2	端子	镀银	1	
1	基座	黑色	1	

NOTE:

1.MATERIAL SPECIFICATION:

- 1-1.HOUSING: LCP BLACK
- 1-2.CONTACTS: PHOSPHOR COPPER
- 1-3.SHRAPNEL: STAINLESS STEEL
- 1-4.YELLOW FILM: POLYAMIDE FILM

2.MECHANICAL PERFORMANCE:

- 3-1.PRESS FORCE: 250±50g
- 3-2.DURABILITY: 50000 CYCLES.

3.ELECTRICAL PERFORMANCE:

- 4-1.CURRENT RATING:50mA
- 4-2.VOLTAGE RATING:12V
- 4-3.CONTACT RESISTANCE: 100mΩ MAX.
- 4-4.INSULATION RESISTANCE: 100MΩ MIN
- 4-5.DIELECTRIC WITHSTANDING VOLTAGE: 250V AC MIN.

4.ENVIRONMENTAL PERFORMANCE:

OPERATING TEMPERATURE: -20°C~+70°C.

6.P/N ORDER:

WLSW10-0428 X 0029

COLOUR:  
A:BLACK

REV.	REVISION RECORD	DATE		GENERAL TOLERANCES		SCALE: 1:1	NAME	DATE	PART.NO:	DWG.NO:		
AO	NEW RELEASE	21.01.13		LINEAR	ANGLES	APPROVED	Wang_jr	21.01.13	WLSW10-0428X0029	ENDE05		
			0.0±0.35	X°REF±6°	DESIGNER	Han_Gao	21.01.13	TITLE: LIGHT TOUCH SWITCH 3.7*3.7*0.35		REV: A0		SHEET: 1/1
			UNIT:mm	X°±3°	DRAWN	Zijun_Huang	21.01.13					
			SIZE: A4	0.000±0.10	X°X' ±2°							