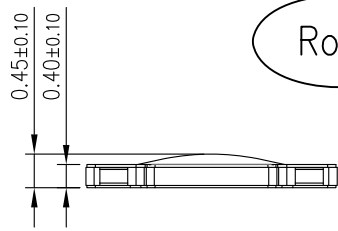
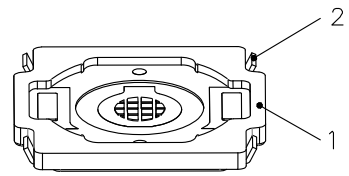
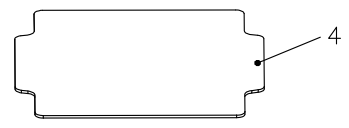
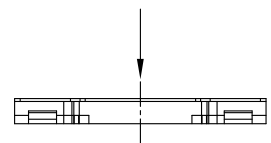


The product using material and processing must conform to the "WI-PZ-001"HSF technical standard control requirements

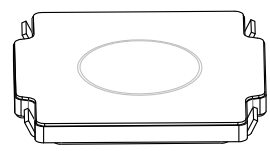
RoHS



垂直按动  
PRESS VERTICALLY

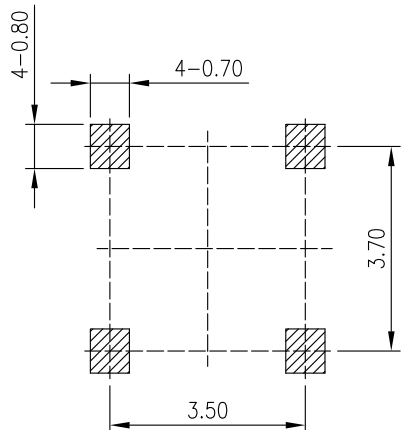
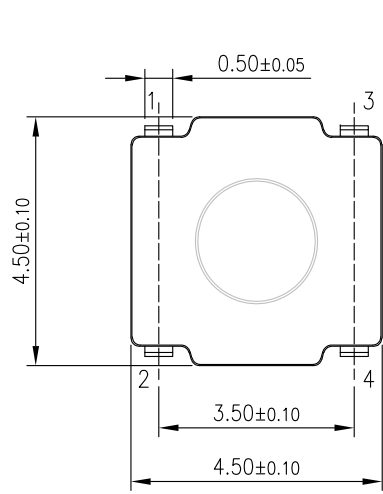


分解视图  
EXPLODED VIEWS

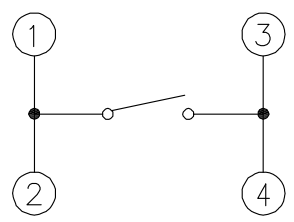


NOTE:  
 1.MATERIAL SPECIFICATION:  
 1-1.HOUSING: LCP  
 1-2.CONTACTS: PHOSPHOR COPPER  
 1-3.SHRAPNEL: STAINLESS STEEL  
 1-4.YELLOW FILM:POLYAMIDE FILM  
 2.MECHANICAL PERFORMANCE:  
 3-1.PRESS FORCE: 180±40gf  
 3-2.DURABILITY: 100000 CYCLES.  
 3.ELECTRICAL PERFORMANCE:  
 3-1.CURRENT RATING:50mA  
 3-2.VOLTAGE RATING:12V  
 3-3.CONTACT RESISTANCE: 100mΩ MAX.  
 3-4.INSULATION RESISTANCE: 100MΩ MIN  
 3-5.DIELECTRIC WITHSTANDING VOLTAGE: 250V AC MIN.  
 4.ENVIRONMENTAL PERFORMANCE:  
 OPERATING TEMPERATURE: -20°C~+70°C.  
 6.P/N ORDER:  
 WLSW10-0428 X 0031

COLOUR:  
 A:BLACK  
 K:WHITE



印刷板安装孔图  
P.C.B MOUNTING PATTERN DIMENSION



电路图  
CIRCUIT DIAGRAM

4	贴纸	黄色	1	
3	弹片	覆银	2	
2	端子	镀银	1	
1	基座	黑色	1	
NO.	名称	表面状态	数量	备注
	PART NAME	FINISHING	QTY.	REMARK

REV.	REVISION RECORD	DATE	☉	GENERAL TOLERANCES		SCALE: 1:1	NAME	DATE	PART.NO:	DWG.NO:		
AO	NEW RELEASE	21.01.13		LINEAR	ANGLES	APPROVED	Wang_jr	21.01.13	WLSW10-0428X0031	ENDE05		
			UNIT:mm	0.00±0.25	X°±3°	DESIGNER	Han_Gao	21.01.13	TITLE: LIGHT TOUCH SWITCH 4.5*4.5*0.45		REV: A0	SHEET: 1/1
			SIZE: A4	0.000±0.10	X°X' ±2°	DRAWN	Zijun_Huang	21.01.13				