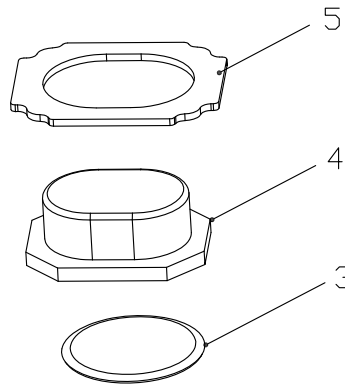
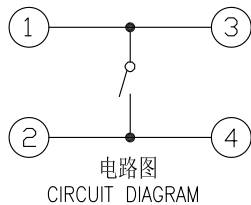
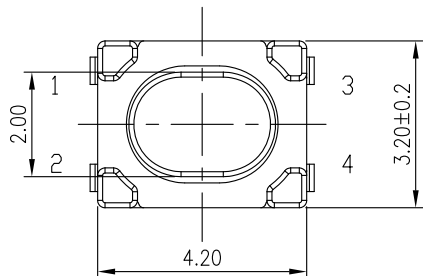


The product using material and processing must conform to the "WI-PZ-001"HSF technical standard control requirements

RoHS



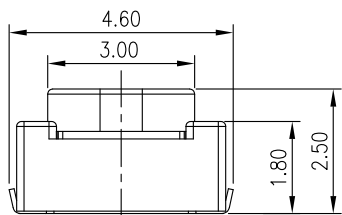
NOTE:

- 1.MATERIAL SPECIFICATION:
  - 1-1.HOUSING: LCP WHITE
  - 1-2.CONTACTS: PHOSPHOR COPPER
  - 1-3.SHRAPNEL: STAINLESS STEEL
  - 1-4.BUTTON: PA
  - 1-5.COVER PLATE: COPPER
- 2.MECHANICAL PERFORMANCE:
  - 3-1.PRESS FORCE: 260±50g
  - 3-2.DURABILITY: 30000 CYCLES.
- 3.ELECTRICAL PERFORMANCE:
  - 3-1.CURRENT RATING:50mA
  - 3-2.VOLTAGE RATING:12V
  - 3-3.CONTACT RESISTANCE: 100mΩ MAX.
  - 3-4.INSULATION RESISTANCE: 100MΩ MIN
  - 3-5.DIELECTRIC WITHSTANDING VOLTAGE: 250V AC MIN.
- 4.ENVIRONMENTAL PERFORMANCE:
  - OPERATING TEMPERATURE: -20°C~+70°C.

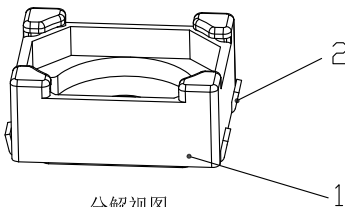
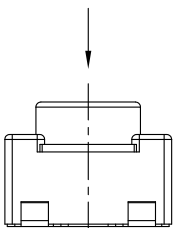
6.P/N ORDER:

WLSW10-0428 X 0032

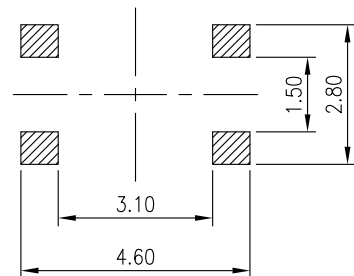
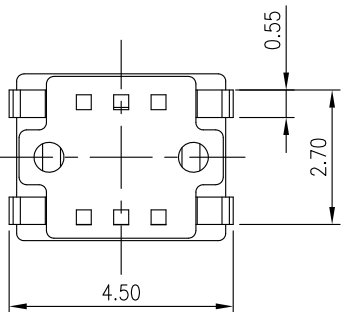
COLOUR:  
K:WHITE



垂直按动  
PRESS VERTICALLY



分解视图  
EXPLODED VIEWS



印刷板安装孔图  
P.C.B MOUNTING PATTERN DIMENSION

5	盖子	镀镍	1	
4	按钮	白色	1	
3	弹片	覆银	1	
2	端子	镀银	1	
1	基座	白色	1	
NO.	名称 PART NAME	表面状态 FINISHING	数量 QTY.	备注 REMARK

REV.	REVISION RECORD	DATE	GENERAL TOLERANCES		SCALE:	NAME	DATE	PART.NO:	DWG.NO:	 WanLian Teconology Co., Ltd
A0	NEW RELEASE	21.01.13		LINEAR	1:1	Wang_jr	21.01.13	WLSW10-0428X0032	ENDE05	
				ANGLES	APPROVED					
			UNIT:mm	0.00±0.25	DESIGNER	Han_Gao	21.01.13	TITLE: LIGHT TOUCH SWITCH 3.2*4.2*2.5		
			SIZE: A4	0.000±0.10	DRAWN	Zijun_Huang	21.01.13	REV: A0	SHEET: 1/1	