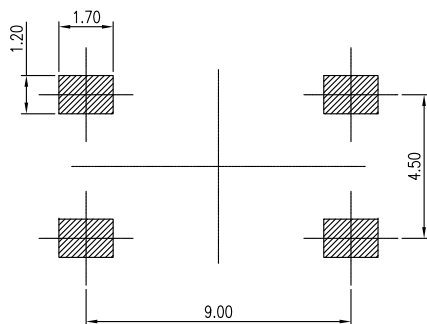
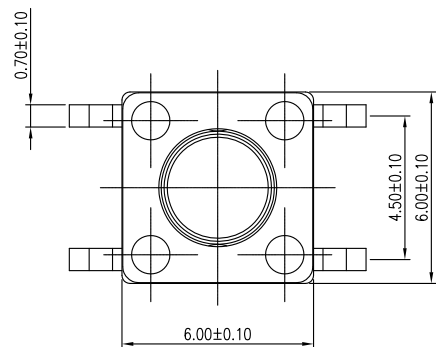
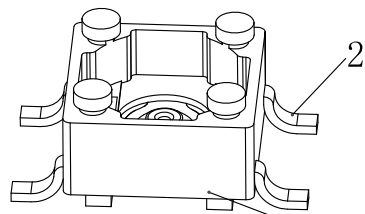
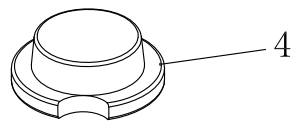
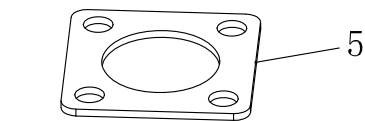
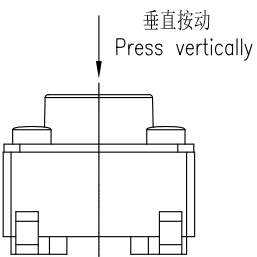
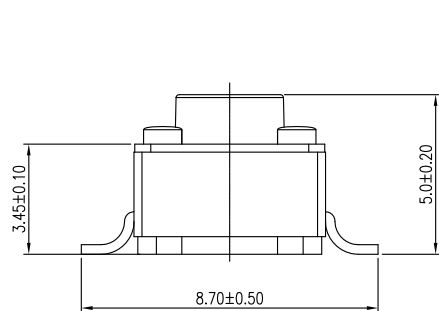


The product using material and processing must conform to the "WI-PZ-001"HSF technical standard control requirements



印刷板安装孔图  
P.C.B Mounting pattern dimension



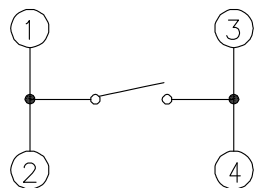
分解视图  
Exploded Views

NOTE:

- 1.MATERIAL SPECIFICATION:
  - 1-1.HOUSING:PA BLACK
  - 1-2.CONTACTS:PHOSPHOR COPPER
  - 1-3.SHRAPNEL:STAINLESS STEEL
  - 1-4.BUTTON:PA
  - 1-5.COVER PLATE:COLD ROLLED STEEL
- 2.MECHANICAL PERFORMANCE:
  - 3-1.PRESS FORCE: 260±50g
  - 3-2.DURABILITY: 100000 CYCLES.
- 3.ELECTRICAL PERFORMANCE:
  - 3-1.CURRENT RATING:5mA
  - 3-2.VOLTAGE RATING:12V
  - 3-3.CONTACT RESISTANCE: 100mΩ MAX.
  - 3-4.INSULATION RESISTANCE: 100MΩ MIN
  - 3-5.DIELECTRIC WITHSTANDING VOLTAGE: 250V AC MIN.
- 4.ENVIRONMENTAL PERFORMANCE:
  - OPERATING TEMPERATURE: -20°C~+70°C.
- 6.P/N ORDER:

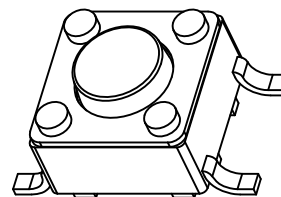
WLSW10-0428 X 0033

COLOUR: A:BLACK



电路图  
Circuit diagram

NO.	名称 PART NAME	表面状态 FINISHING	数量 QTY.	备注 REMARK
5	盖子	镀锡	1	
4	按钮	黑色	1	
3	弹片	覆银	1	
2	端子	镀银	1	
1	基座	黑色	1	



REV.	REVISION RECORD	DATE	GENERAL TOLERANCES		SCALE:	NAME	DATE	PART.NO:	DWG.NO:		
AO	NEW RELEASE	21.01.13	LINEAR	ANGLES	1:1	Wang_jr	21.01.13	WLSW10-0428X0033	ENDE05		
			0.0±0.35	X'REF±6°	APPROVED	Han_Gao	21.01.13	TITLE:			
			0.00±0.25	X°±3°	DESIGNER	Zijun_Huang	21.01.13	LIGHT TOUCH SWITCH 6*6 PATCH			
			UNIT:mm	0.00±0.10	X'X' ±2°	DRAWN				REV: A0	SHEET: 1/1