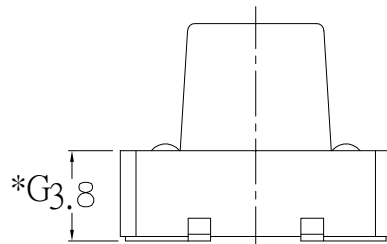
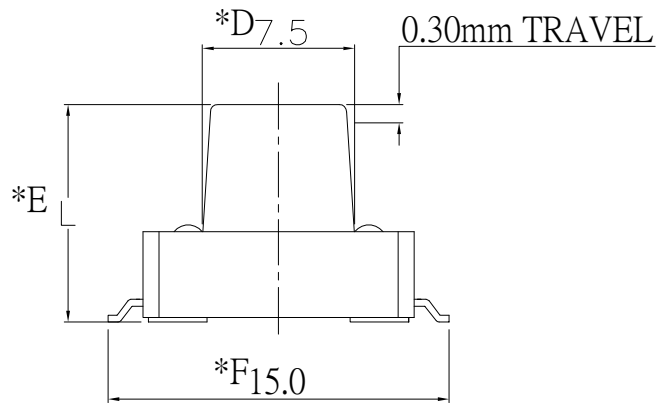
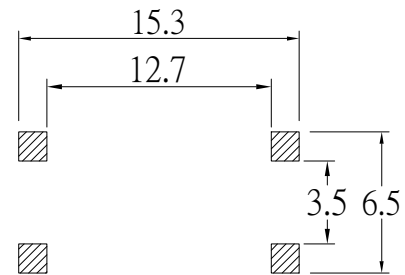
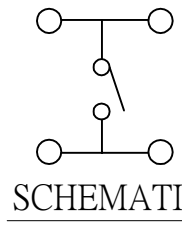
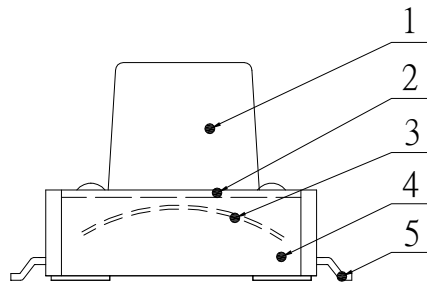
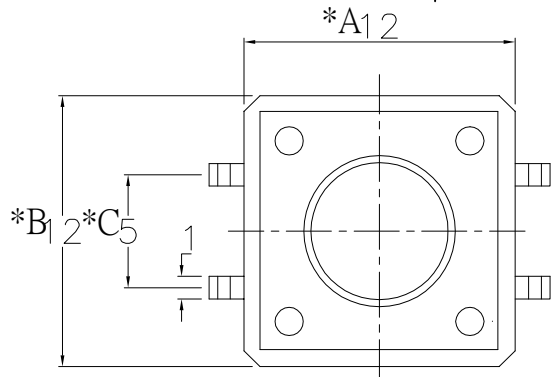


The product using material and processing must conform to the "WI-PZ-142"HSF technical standard control requirements




PART ORDER:  
WLSW10-04 2 X X 23-039

PLATING: 8-Ag COLOUR:  
A:Black  
K:White  
J:GREY

STEM COLOR	<input checked="" type="checkbox"/>	BLACK
	<input type="checkbox"/>	WHITE
	<input type="checkbox"/>	GREY
(height) L=	<input type="checkbox"/> A	4.3 mm
	<input type="checkbox"/> B	5.0 mm
	<input type="checkbox"/> C	7.0 mm
	<input type="checkbox"/> D	7.3 mm
	<input type="checkbox"/> E	13.0 mm
(force) F=	<input checked="" type="checkbox"/> 7.5	7.5 mm
	<input type="checkbox"/> L	130 gf
	<input type="checkbox"/> S	160 gf
	<input checked="" type="checkbox"/> H	250 gf

\* CRITICAL DIMENSION

5	TERMINAL	BRASS	4	Ag COATING
4	CASE	PPA	1	BLACK
3	CONTACT	C5210R-EH \ SUS	1	Ag CLAD
2	COVER	SPN STRIP	1	NiCOATING
1	STEM	PPA	1	ABOVE
NO.	PART NAME	MATERIAL	QTY	FINISHING

REV.	REVISION RECORD	DATE	UNIT:mm	GENERAL TOLERANCES		SCALE: 1:1	NAME	DATE	PART.NO:	DWG.NO:	 WanLian Teconology Co., Ltd
A0	NEW RELEASE	21.01.13		LINEAR	ANGLES	APPROVED	Wang_jr	21.01.13	WLSW10-042XX23-039	ENDE05	
			0.00±0.25	X'±3'	DESIGNER	Ding_bo	21.01.13	TITLE:		REV: A0	SHEET: 1/1
			SIZE: A4	0.000±0.10	X'X' ±2'	DRAWN	Ou_jian	21.01.13	TACT SWITCH		