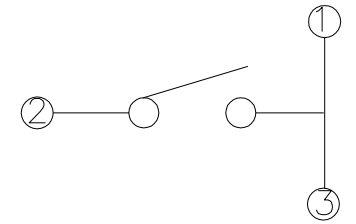
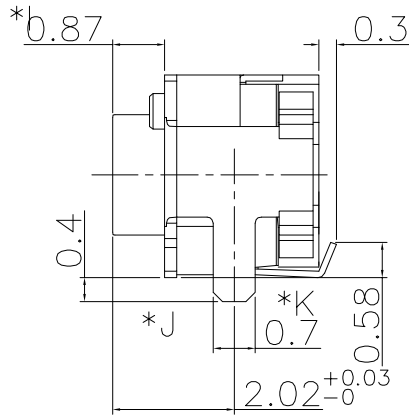
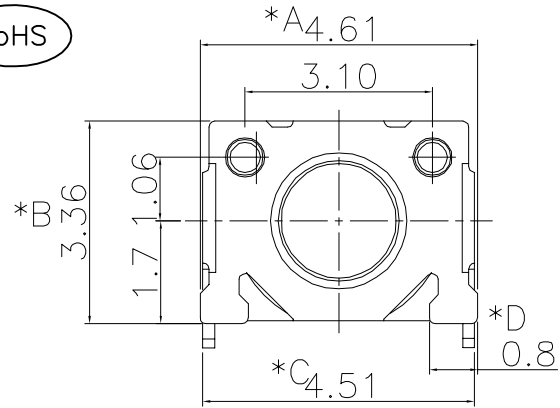
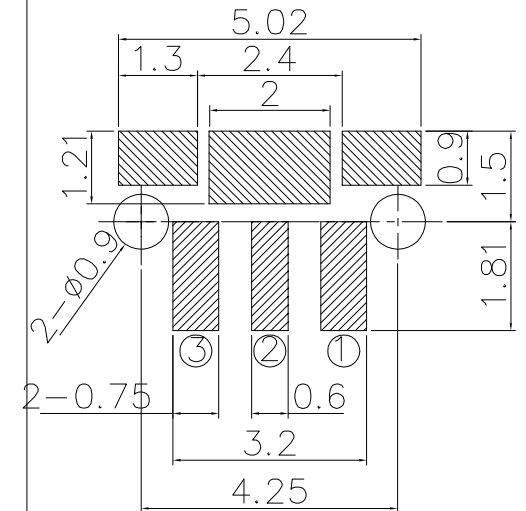
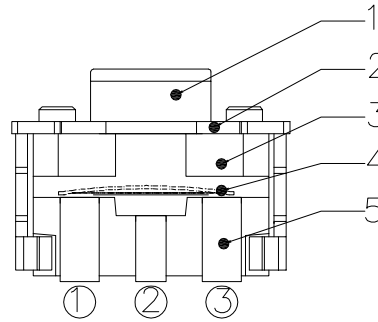
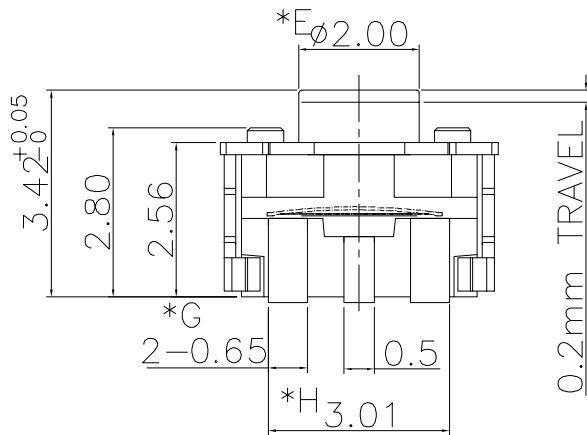


The product using material and processing must conform to the "WI-PZ-001"HSF technical standard control requirements

RoHS



SCHEMATIC



P.C.B.LAYOUT

NO.	PART NAME	MATERIAL	QTY	FINISHING
5	TERMINAL	PBS	2	Ag COATING
4	CONTACT	SUS	1	Ag CLAD
3	CASE	LCP	1	BACK
2	COVER	BRASS	1	Ni COATING
1	STEM	PPA/LCP	1	WHITE

PART ORDER:

WLSW19-02 2 X X 0 024

PLATING:  
8-Ag

COLOUR:  
A:Black  
K:White

(force) F=	■ 2	160gf/180 gf
	□ 3	250 gf

\* CRITICAL DIMENSION

REV.	REVISION RECORD	DATE	GENERAL TOLERANCES		SCALE:	NAME	DATE	PART.NO:	DWG.NO:
A0	NEW RELEASE	21.01.13		LINEAR	1:1	Wang_jr	21.01.13	WLSW19-022XX0024	ENDE05
				ANGLES					
			UNIT:mm	0.00±0.25	X'±3'	DESIGNER	Ding_bo	21.01.13	TITLE:
			SIZE: A4	0.000±0.10	X'X' ±2'	DRAWN	Ou_jian	21.01.13	TACT SWITCH



REV: A0 SHEET: 1/1