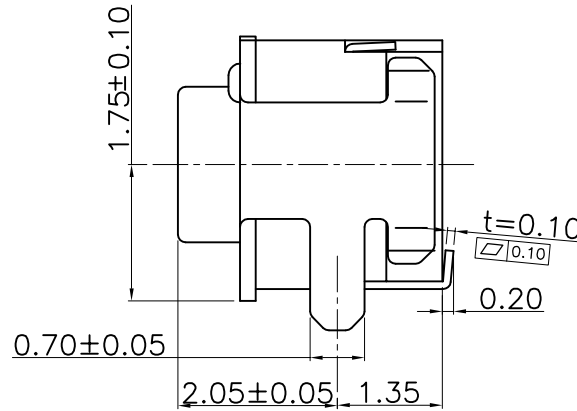
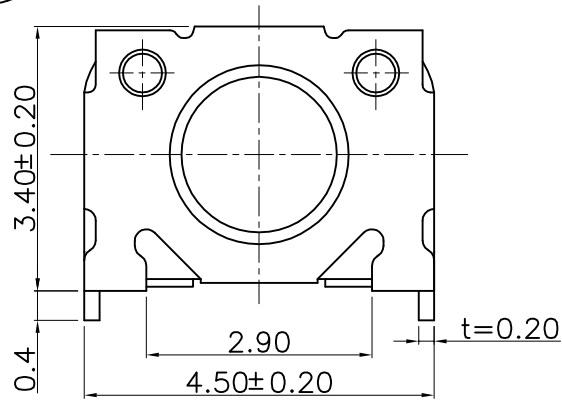


The product using material and processing must conform to the "WL-PZ-001" HSF technical standard control requirements

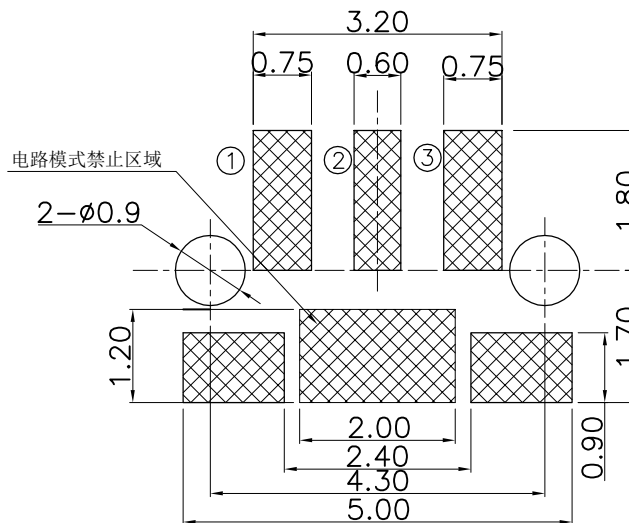
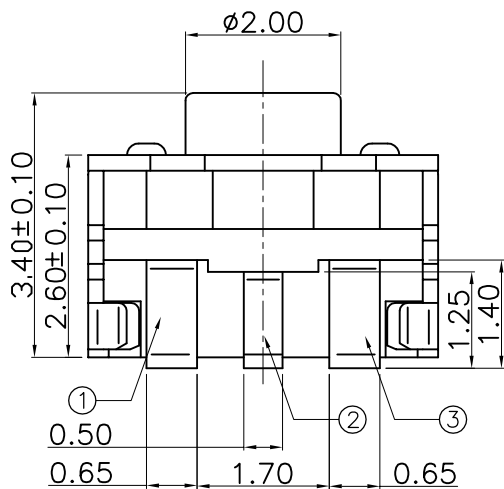
RoHS



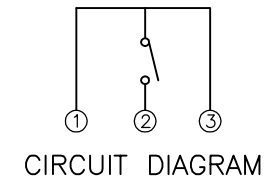
NOTE:

- 1.MATERIAL SPECIFICATION:
 - 1-1.FRAME:PHOSPHOR BRONZE
 - 1-2.LEVER:LCP COLOUR:WHITE
 - 1-3.CONTACT:STAINLESS STEEL
 - 1-4.BASE:LCP COLOUR:BLACK
 - 1-5.TERMINAL:PHOSPHOR BRONZE
- 2.PLATING SPECIFICATION:
 - 2-1.FRAME:AG-PLATING.
 - 2-2.CONTACT:AG-PLATING ON CONTACT AREA.
 - 2-3.TERMINAL:AG-PLATING ON CONTACT AREA.
- 3.ELECTRICAL PERFORMANCE:
 - 4-1.RATING CURRENT:0.5A
 - 4-2.RATING VOLTAGE:30V
 - 4-3.CONTACT RESISTANCE: 100mΩ MAX;
 - 4-4.INSULATION RESISTANCE:100MΩ MIN
 - 4-5.WITHSTANDING VOLTAGE: 250V AC
- 4.OPERATION TEMPERATURE RANGE:-20°C~+85°C
- 5.P/N:WLSW19-03 2 X X 0 039

PLATED: 1.G/F
7.SN
8.AG
COLOUR: A.BLACK



P.C.B MOUNTING PATTERN DIMENSION
the following soldering are recommended
for reflow soldering



REV.	REVISION RECORD	DATE		GENERAL TOLERANCES		SCALE: 1:1	NAME	DATE	PART.NO: WLSW19-032XX0039	DWG.NO: ENDE05	
A0	NEW RELEASE	21.01.13		LINEAR	ANGLES	APPROVED	Wang_jr	21.01.13			
			0.0±0.35	X'REF±6°	DESIGNER	Han_Gao	21.01.13	TITLE: TACT SWITCH			
			UNIT:mm	0.00±0.25	X'±3°	DRAWN	Zijun_Huang	21.01.13			
			SIZE: A4	0.000±0.10	X'X' ±2°				REV: A0	SHEET: 1/1	