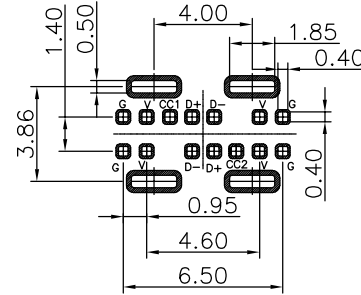
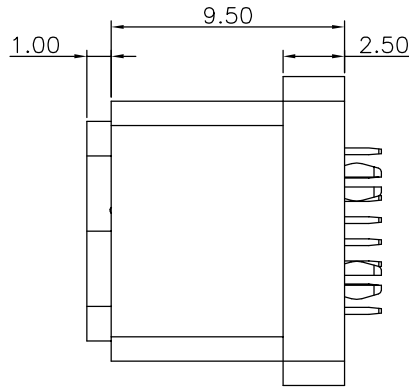
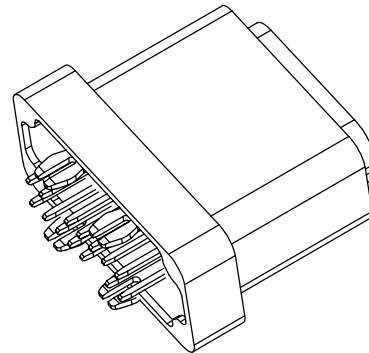
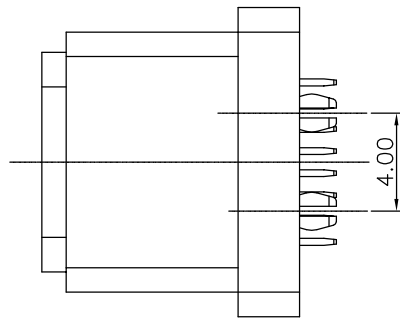
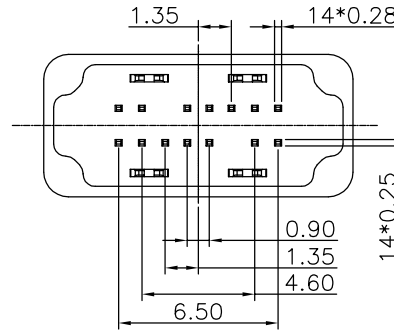
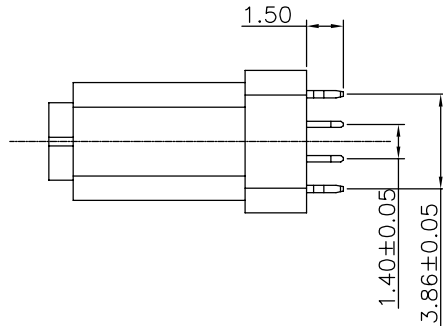
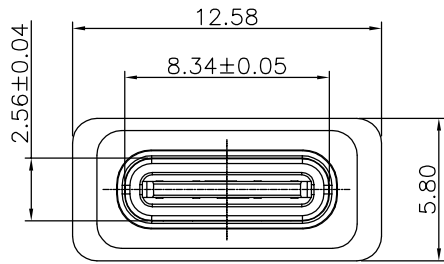


The product using material and processing must conform to the "WL-PZ-001"HSF technical standard control requirements

RoHS



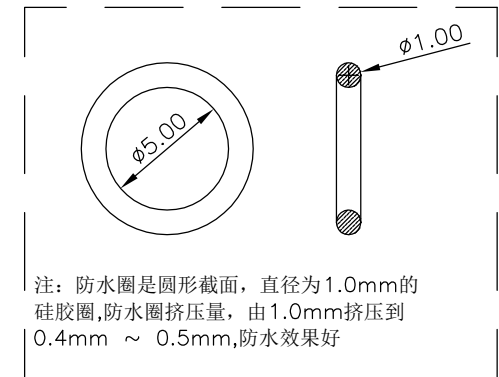
RECOMMENDED P.C.B. LAYOUT
TOLERANCE UNSPECIFIED $\pm 0.05\text{mm}$



NOTE:

- 1.MATERIAL SPECIFICATION:
 - 1-1.HOUSING :PA10T
 - 1-2.CONTACT :PHOSPHOR BRONZE T=0.20
 - 1-3.SHELL 1:SUS301 T=0.25
- 2.PLATING SPECIFICATION:
 - 2-1.CONTACT:AU G/F PLATING ON CONTACT AREA.
 - 2-2.SHELL:NI PLATING OVER ALL.
- 3.MECHANICAL PERFORMANCE:
 - 3-1.INSERTION FORCE:0.5~2.0Kgf
 - 3-2.EXTRACTION FORCE:0.6~2.0Kgf
 - 3-3.DURABILITY: 10000 CYCLES.
- 4.ELECTRICAL PERFORMANCE:
 - 4-1.RATED CURRENT:3.0A
 - 4-2.VOLTAGE RATING:20V
 - 4-3.CONTACT RESISTANCE: 40mΩ MAX
 - 4-4.INSULATION RESISTANCE: 100MΩ MIN
 - 4-5.WITHSTANDING VOLTAGE: 100V AC
- 5.OPERATION TEMPERATURE RANGE:-30°C~85°C
- 6.DUSTPROOF AND WATERPROOF GRADE IP67.
- 7.PACKAGE SPEC:REEL
- 8.P/N: WLT2F0-14 1 X X X 125

PLATED: _____ HOUSING:
 1-G/F 1-PA10T
 2-Au 3u" 2-LCP
 5-Au 15u" COLOUR:
 6-Au 30u" A-BLACK



REV.	REVISION RECORD	DATE		GENERAL TOLERANCES		SCALE: 1:1	NAME	DATE	PART.NO:	DWG.NO:	
A0	NEW RELEASE	21.01.13		LINEAR	ANGLES	APPROVED	Wang_jr	21.01.13	WLT2F0-141XXX125	ENDE05	
			UNIT:mm	0.00±0.25	X'±3'	DESIGNER	Han_Gao	21.01.13	TITLE:		
			SIZE: A4	0.000±0.10	X'X' ±2'	DRAWN	Zijun_Huang	21.01.13	TYPE C 14P/F 180° DIP IPX7		REV: A0 SHEET: 1/1