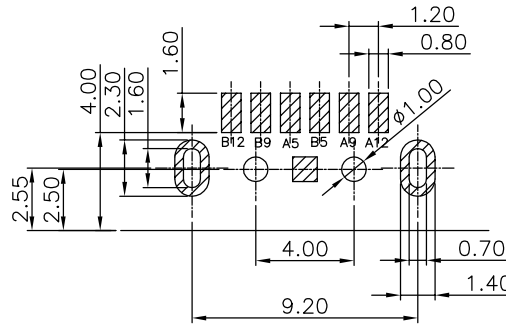
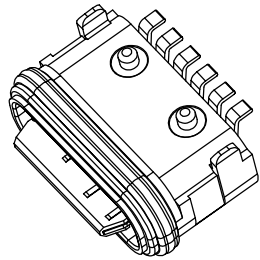
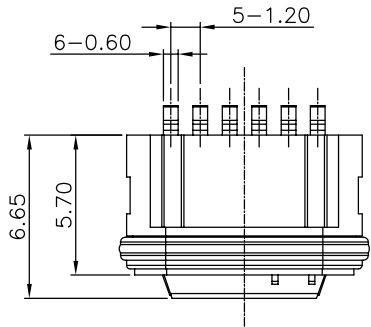


The product using material and processing must conform to the "WL-PZ-001"HSF technical standard control requirements

RoHS



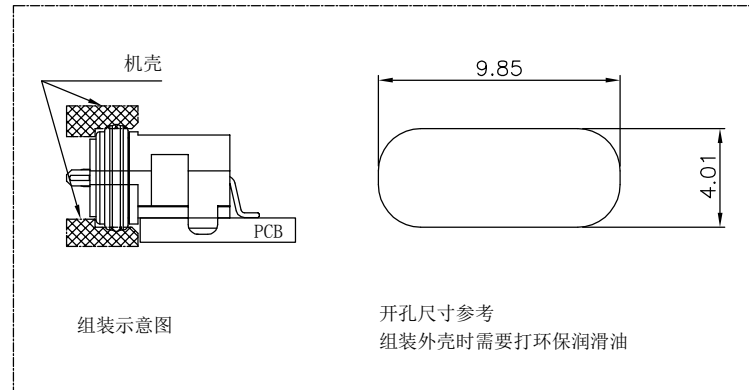
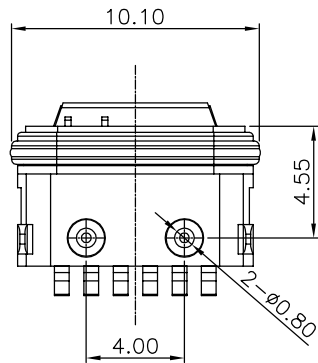
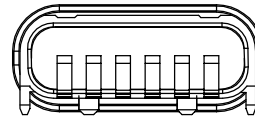
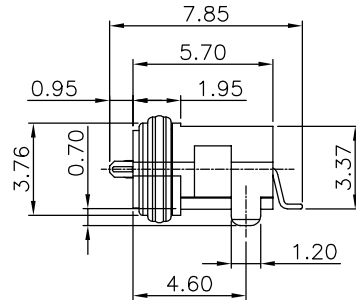
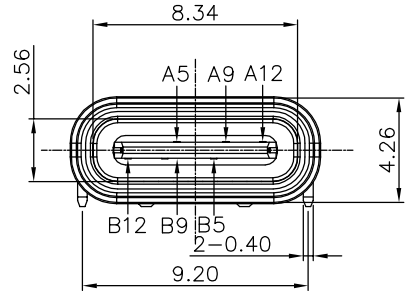
RECOMMENDED P. C. B LAYOUT
TOP VIEW (TOLRANCE: ±0.05)

NOTE:

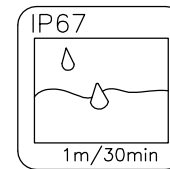
- MATERIAL SPECIFICATION:
 - HOUSING :PA10T BLACK
 - CONTACT :PHOSPHOR BRONZE
 - SHELL:ZINC ALLOY
- PLATING SPECIFICATION:
 - CONTACT:AU PLATING ON CONTACT AREA.
- MECHANICAL PERFORMANCE:
 - INSERTION FORCE:2.0Kgf MAX
 - EXTRACTION FORCE:0.8Kgf MIN
 - DURABILITY: 10000 CYCLES.
- ELECTRICAL PERFORMANCE:
 - RATED CURRENT:3.0A
 - VOLTAGE RATING:20V
 - CONTACT RESISTANCE: 40mΩ MAX
 - INSULATION RESISTANCE: 100MΩ MIN
 - WITHSTANDING VOLTAGE: 100V AC
- OPERATION TEMPERATURE RANGE:-25°C~85°C
- WATER PROOFNESS:THIS PRODUCT IS BASED ON IPX7.
- PLUG INTERFACE DIMENSIONS COMFORM TO USB2.0 SPEC.
- PACKAGE SPEC:REEL
- P/N:

WLT2F9-06 2 X X X 126

PLATED: 1-G/F
2-Au 3u"
5-Au 15u"
6-Au 30u"
HOUSING: 1-PA10T
2-LCP
COLOUR: A-BLACK



A5	CC1	B12	GND
A9	VBUS	B9	VBUS
A12	GND	B5	CC2
PIN	SIGNAL NAME	PIN	SIGNAL NAME



REV.	REVISION RECORD	DATE	GENERAL TOLERANCES		SCALE:	NAME	DATE	PART.NO:	DWG.NO:	 WanLian Teconology Co., Ltd
A0	NEW RELEASE	21.01.13	LINEAR	ANGLES	1:1	APPROVED	Wang_jr	21.01.13	ENDE05	
			0.0±0.35	X°REF±6°		DESIGNER	Han_Gao	21.01.13		
			0.00±0.25	X'±3°		DRAWN	Zijun_Huang	21.01.13		
			UNIT:mm	0.00±0.10						TITLE:
			SIZE: A4	X°X'±2°						TYPE C 6P/F SMT IPX7
										REV: A0
										SHEET: 1/1