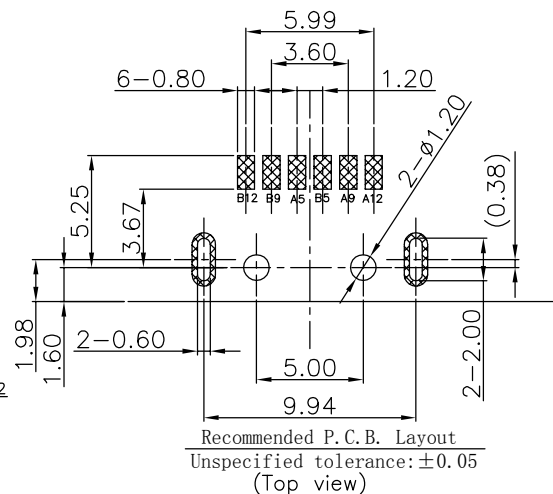
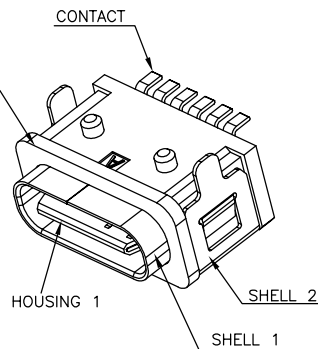
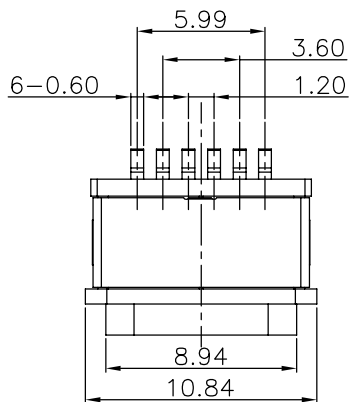
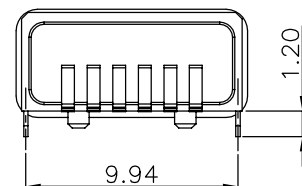
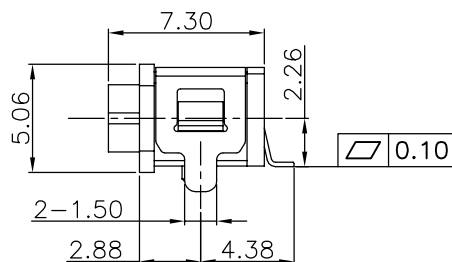
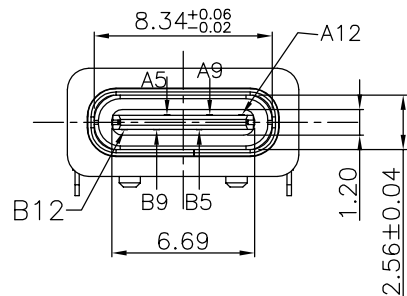


The product using material and processing must conform to the "WL-PZ-001"HSF technical standard control requirements

RoHS



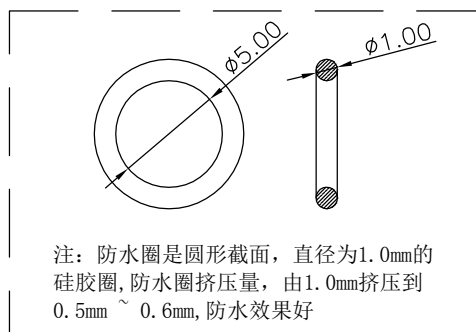
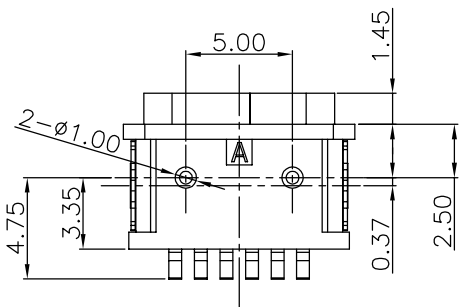
- NOTE:
- MATERIAL SPECIFICATION:
    - 1-HOUSING :PA10T BLACK
    - 1-2.CONTACT :COPPER ALLOY
    - 1-3.MID PLATE:STAINLESS STEEL
    - 1-4.FRONT PLATE:STAINLESS STEEL
  - PLATING SPECIFICATION:
    - 2-1.CONTACT:AU G/F PLATING ON CONTACT AREA.
    - 2-2.MID PLATE:NI PLATING OVER ALL.
    - 2-3.FRONT PLATE:NI PLATING OVER ALL.
  - MECHANICAL PERFORMANCE:
    - 3-1.INSERTION FORCE:2.0Kgf MAX
    - 3-2.EXTRACTION FORCE:0.8Kgf MIN
    - 3-3.DURABILITY: 10000 CYCLES.
  - ELECTRICAL PERFORMANCE:
    - 4-1.RATED CURRENT:3.0A
    - 4-2.VOLTAGE RATING:20V
    - 4-3.CONTACT RESISTANCE: 40mΩ MAX.
    - 4-4.INSULATION RESISTANCE: 100MΩ MIN
    - 4-5.WITHSTANDING VOLTAGE: 100V AC
  - OPERATION TEMPERATURE RANGE:-25°C~85°C
  - WATER PROOFNESS:THIS PRODUCT IS BASED ON IPX7.
  - PACKAGE SPEC REEL
  - P/N: WLT2F9-06 2 X X X 129



PLATED: 1-G/F  
2-Au 3u"  
5-Au 15u"  
6-Au 30u"

HOUSING: 1-PA10T  
2-LCP

COLOUR: A-BLACK



A5	CC1	B12	GND
A9	VBUS	B9	VBUS
A12	GND	B5	CC2
PIN	SIGNAL NAME	PIN	SIGNAL NAME

ITEM	PART NAME	Q'TY	FINISH	NOTE
5	Shell2	1	SUS301 Ni Plating T=0.20mm	Ni:40u"Min;
4	Shell1	1	SUS301 Ni Plating T=0.25mm	Ni:40u"Min;
3	Housing2	1	PA10T(G.F30%)	
2	Contact	6	Phosphor bronze C5210R-EH Au/Ni Plating T=0.20mm	Ni:40u"Min; Au:CONTACT AREA:1u", OTHER AREA:G/F
1	Housing	1	PA10T (G.F30%)	

REV.	REVISION RECORD	DATE	GENERAL TOLERANCES	SCALE:	NAME	DATE	PART.NO:	DWG.NO:
A0	NEW RELEASE	21.01.13	LINEAR 0.0±0.35	1:1	Wang_jr	21.01.13	WLT2F9-062XXX129	ENDE05
			ANGLES 0.00±0.25	APPROVED	Han_Gao	21.01.13	TITLE:	
			0.00±0.10	DESIGNER	Zijun_Huang	21.01.13	TYPE C 6P/F SMT L=7.3mm IPX7	
			UNIT:mm	DRAWN				
			SIZE: A4					



REV: A0 SHEET: 1/1