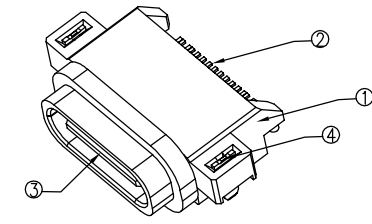
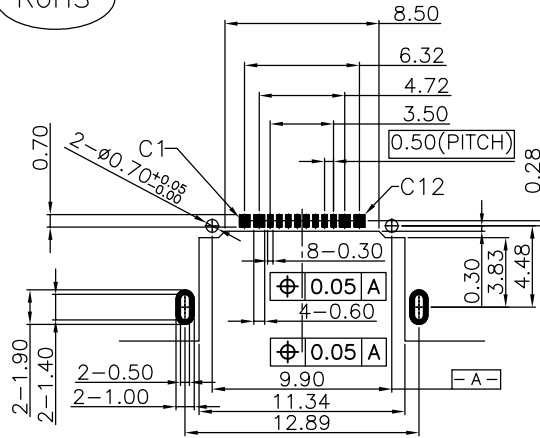
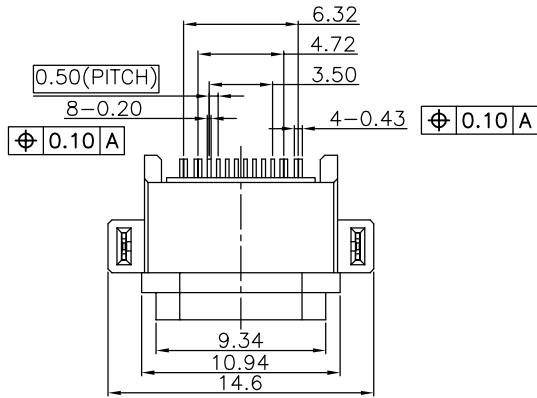


The product using material and processing must conform to the "WL-PZ-001"HSF technical standard control requirements

RoHS

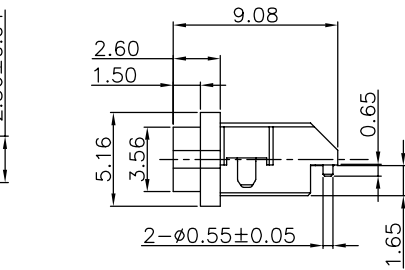
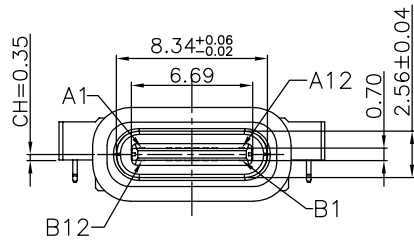
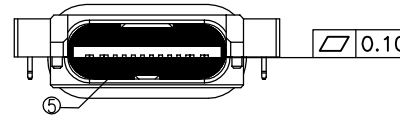


NOTE:
 1.MECHANICAL PERFORMANCE:
 1-1.INSERTION FORCE:2.0Kgf MAX
 1-2.EXTRACTION FORCE:2.0Kgf MIN
 1-3.DURABILITY: 10000 CYCLES.
 2.ELECTRICAL PERFORMANCE:
 2-1.RATED CURRENT:3A
 2-2.VOLTAGE RATING:20V MAX
 2-3.CONTACT RESISTANCE: 40mΩ MAX
 2-4.INSULATION RESISTANCE: 100MΩ MIN
 2-5.WITHSTANDING VOLTAGE: 100V AC
 3.OPERATION TEMPERATURE RANGE:-25°C~85°C
 4.PACKAGE SPEC:REEL
 5.P/N:

WLT2F9-16 8 X X X 122
 PLATED:
 1-G/F
 2-Au 3u"
 5-Au 15u"
 6-Au 30u"
 HOUSING:
 1-PA10T
 2-LCP
 COLOUR:
 A-BLACK

RECOMMENDED PCB LAYOUT(TOP VIEW)

THICKNESS T=1.0mm
 DEFAULT TOLERANCE+/-0.05



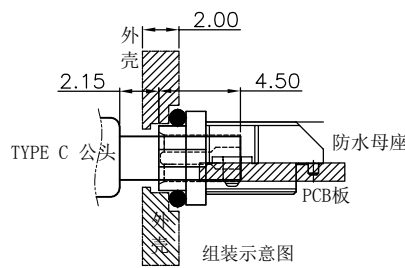
INTERFACE(FRONT VIEW)

A1	A2	A3	A4	A5	A6	A7	A8	A9	A10	A11	A12
GND			VBUS	CC1	DP1	DN1	SBU1	VBUS			GND
GND			VBUS	SBU2	DN2	DP2	CC2	VBUS			GND
B12	B11	B10	B9	B8	B7	B6	B5	B4	B3	B2	B1

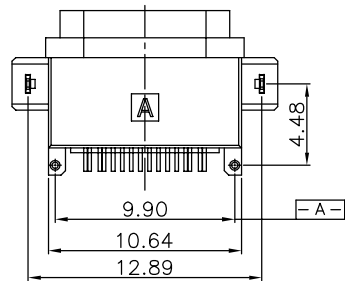
PIN ASSIGNMENT

PIN NO.	A1&B12	A4&B9	B8	A5	B7	A6	A7	B6	A8	B5	A9&B4	A12&B1
SINGAL NAME	GND	VBUS	SBU2	CC1	DN2	DP1	DN1	DP2	SBU1	CC2	VBUS	GND
PCB PAD NO.	C1	C2	C3	C4	C5	C6	C7	C8	C9	C10	C11	C12

5	Epoxy											BLACK
4	Contact 3	2	SUS304 1/2H						Ni	Plating	T=0.25mm	
3	Housing 2	1	PA10T (G.F30%)						BLACK			
2	Contact 1&2	16	Phosphor bronze C5191R-EH						Au3u	Plating	T=0.15mm	
1	Housing 1	1	PA10T (G.F30%)						BLACK			
ITEM	PART NAME	Q'TY	FINISH				NOTE					



注: 防水圈是圆形截面, 直径为0.9mm的硅胶圈, 防水圈挤压量, 由0.9mm挤压到0.4mm ~ 0.5mm, 防水效果好



REV.	REVISION RECORD	DATE	UNIT:mm	GENERAL TOLERANCES		SCALE: 1:1	NAME	DATE	PART.NO: WLT2F9-168XXX122	DWG.NO: ENDE05	TITLE: TYPE C 16P/F SMT IPX7
A0	NEW RELEASE	21.01.13		LINEAR	ANGLES	APPROVED	Wang_jr	21.01.13			
			SIZE: A4	0.00±0.25	X°±3°	DESIGNER	Han_Gao	21.01.13			
				0.00±0.10	X°X' ±2°	DRAWN	Zijun_Huang	21.01.13			



REV: A0 SHEET: 1/1