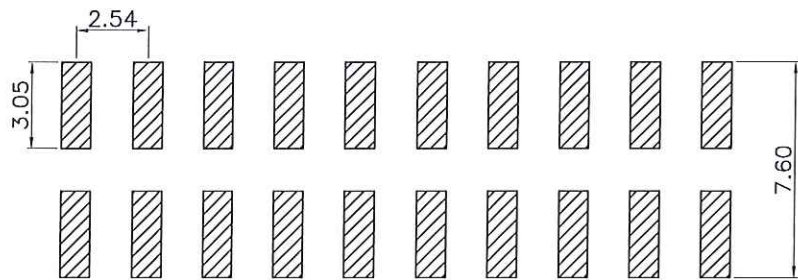
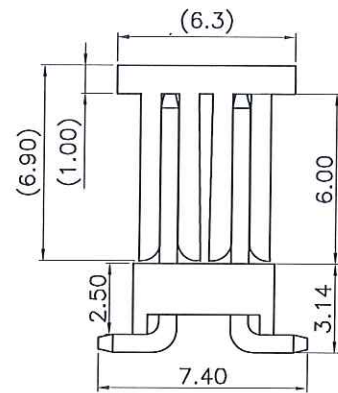
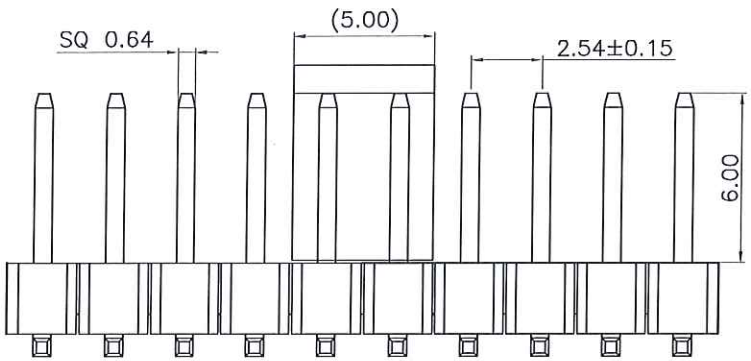
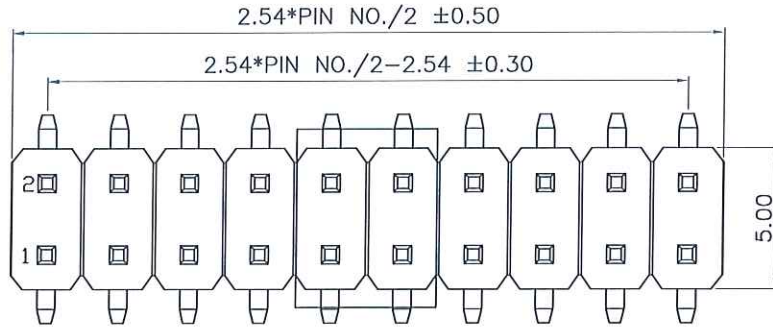


The product using material and processing must conform to the "WI-PZ-001"HSF technical standard control requirements

RoHS+HF



RECOMMENDED P.C.B LAYOUT  
P.C.B TOLERANCE:±0.05

NOTE:

- 1.MATERIAL SPECIFICATION:
  - 1-1.HOUSING: PA6T,UL94V-0
  - 1-2.CONTACTS: BRASS
- 2.PLATING SPECIFICATION:
  - 2-1.CONTACTS: GOLD FLASH OVER NICKEL
- 3.ELECTRICAL PERFORMANCE:
  - 3-1.CURRENT RATING: 3A
  - RATED VOLTAGE : 500V AC/DC
  - 3-2.CONTACT RESISTANCE: 30 mΩ MAX
  - 3-3.INSULATION RESISTANCE: 1000MΩ Min
  - 3-4.DIELECTRIC WITHSTANDING : 500V
- 4.ENVIRONMENTAL PERFORMANCE:
  - 4-1.OPERATING TEMPERATURE: -40°C~+105°C.
- 5.PACKAGE SPEC: REEL
- 6.P/N:

PH2541 25 M 0-2 XX 2 X X X 01

SERIES NO: PH2541  
 HEIGHT: 25: 2.5mm  
 MALE FEMALE: M-MALE  
 ANGLE: 0-180°  
 ROW NO: 2-DOUBLE ROW  
 PIN Q'PY: 02~80

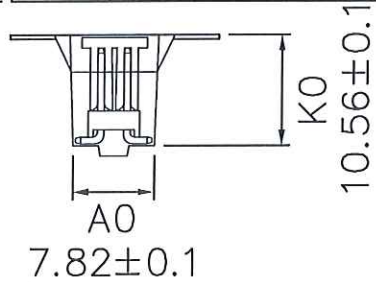
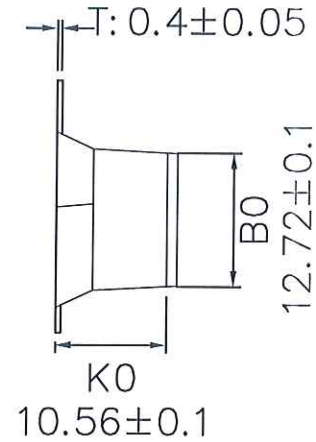
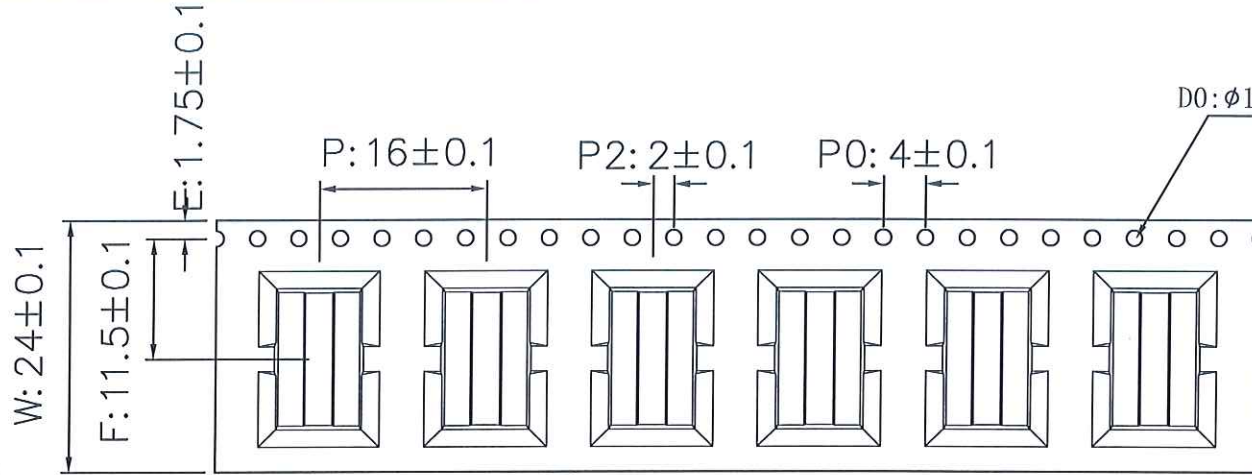
HOUSING: 1-PA6T+HF  
 COLOR: A-BLACK  
 PLATING: A-ALL AU G/F  
 TERMIPOINT: 2-SMT



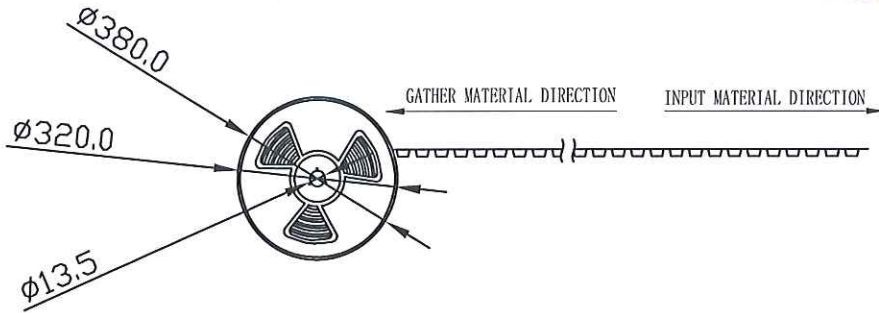
REV.	REVISION RECORD	DATE		GENERAL TOLERANCES		SCALE: 1:1	NAME	DATE	PART.NO:	DWG.NO:	 WanLian Technology Co., Ltd
A0	NEW RELEASE			LINEAR	ANGLES	APPROVED	8/2/2025	25.1.13	PH254125M0-2XX2XXX01	ENDE05	
			UNIT: mm	0.0±0.35	X'REF±6'	DESIGNER	JZB	25.01.13	TITLE:	REV: A0	SHEET: 1/2
			SIZE: A4	0.00±0.25	X'±3'	DRAWN	董容梅	25.01.13	Pitch 2.54mm 180°双排 SMT单塑 排针		

The product using material and processing must conform to the "WI-PZ-001"HSF technical standard control requirements

RoHS+HF



- NOTES:
1. ALL DIMENSIONS MEET EIA-481-B REQUIREMENTS.
  2. MATERIAL: BLACK PS
  3. CARRIER CAMER NOT TO EXCEED 1mm IN 250mm.
  4. A0 AND B0 MEASURED ON A PLANE 0.3mm ABOVE THE BOTTOM OF THE POCKET.
  5. KO MEASURED FROM A PLANE ON THE INSIDE BOTTOM OF THE POCKET TO THE TOP SURFACE OF THE CARRIER.
  6. QUANTITY: 500PCS. (LENGTH: 8.448m)
  7. THICKNESS: 0.3± 0.05mm.
  8. REEL: 15"



REV.	REVISION RECORD	DATE	GENERAL TOLERANCES		SCALE:	NAME	DATE	PART.NO:	DWG.NO:
A0	NEW RELEASE		LINEAR	ANGLES	1:1			PH254125M0-2102AA101	ENDE05
			0.0±0.35	X'REF±6'	APPROVED	8/8/14	25.1.13		
			0.00±0.25	X'±3'	DESIGNER	JTB	25.01.13	TITLE:	
			0.000±0.10	X'X' ±2'	DRAWN	黄家辉	25.1.13	2.54mm 180°双排 SMT单塑 排针2X5P 包装图	



REV: A0 SHEET: 2/2