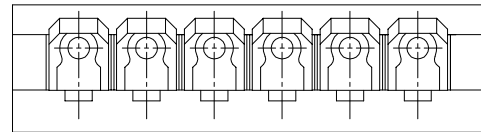
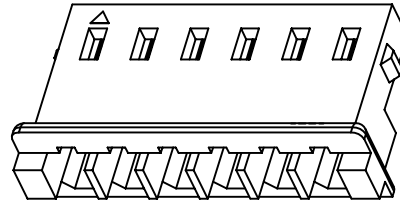
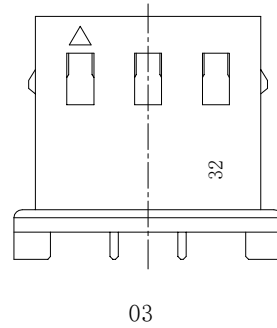
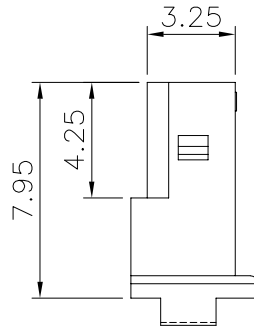
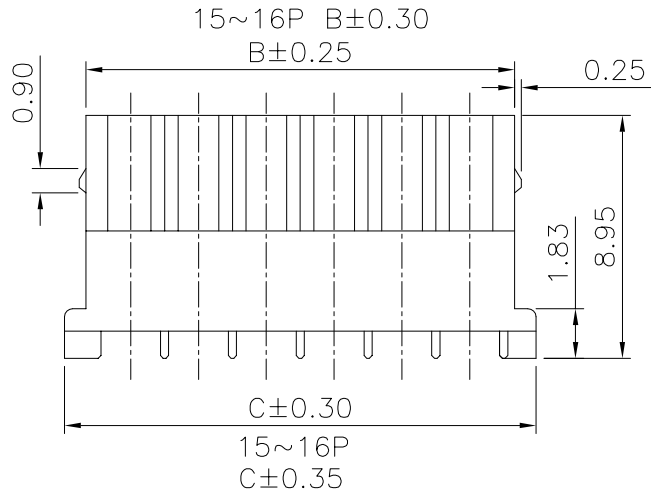
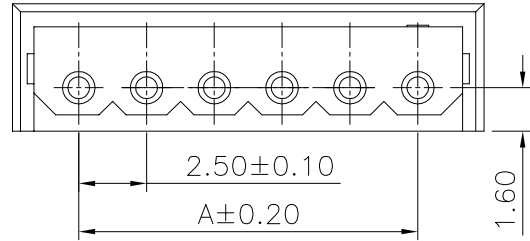


The product using material and processing must conform to the "WL-PZ-001"HSF technical standard control requirements

RoHS+HF



NOTE:

- 1.MATERIAL SPECIFICATION:
 - 1-1.HOUSING: PA66,UL94V-0
- 2.MECHANICAL PERFORMANCE:
 - 2-1.RETENTIVITY FORCE: 1.0KGF/pin min
 - 2-2.DURABILITY: 50 CYCLES.
- 3.ELECTRICAL PERFORMANCE:
 - 3-1.CURRENT RATING: 3A AC/DC
 - RATED VOLTAGE : 250V AC/DC
 - 3-2.CONTACT RESISTANCE: 20 mΩ MAX
 - 3-3.INSULATION RESISTANCE: 1000MΩ Min
 - 3-4.DIELECTRIC WITHSTANDING : 1000V
- 4.ENVIRONMENTAL PERFORMANCE:
 - 4-1.OPERATING TEMPERATURE: -25°C~+85°C.
- 5.PACKAGE SPEC: PE BAG
- 6.P/N:

WL 250 H M 0-XX X 0121

PITCH:
250-2.50mm

COLOR:
A-BLACK
M-Beige
S-NATURE

CONNECTOR:
H-HOUSING

PIN Q'PY:
02~16

MALE FEMALE:
M-MALE

ANGLE:
0-180°

PIN	DIM. (mm)			PIN	DIM. (mm)		
	A	B	C		A	B	C
02	2.50	5.90	7.50	10	22.50	25.90	27.50
03	5.00	8.40	10.00	11	25.00	28.40	30.00
04	7.50	10.90	12.50	12	27.50	30.90	32.50
05	10.00	13.40	15.00	13	30.00	33.40	35.00
06	12.50	15.90	17.50	14	32.50	35.90	37.50
07	15.00	18.40	20.00	15	35.00	38.40	40.00
08	17.50	20.90	22.50	16	37.50	40.90	42.50
09	20.00	23.40	25.00				

REV.	REVISION RECORD	DATE		GENERAL TOLERANCES		SCALE:	NAME	DATE	PART.NO:	DWG.NO:	
AO	NEW RELEASE	22.09.08		LINEAR	ANGLES	1:1	Wang_jr	22.09.08			
			UNIT:mm	0.00±0.25	X'±3°	DESIGNER	Han_Gao	22.09.08	WL250HM0-XXX0121	ENDE05	Pitch 2.50mm (Molex 5264) 无Logo 胶壳
			SIZE: A4	0.000±0.10	X'X' ±2°	DRAWN	LanXuan_Hou	22.09.08			